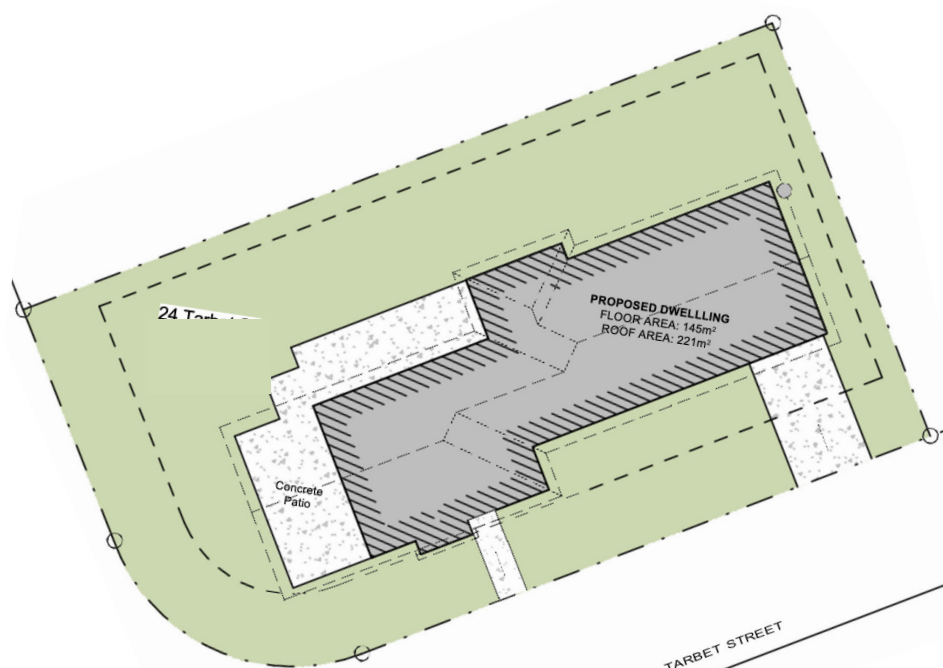


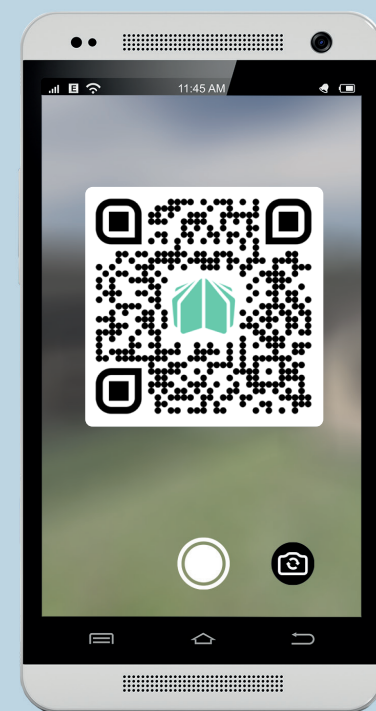
**FOR SALE**

**24 Tarbet Street**

**LOT  
14**



Site Plan



HomeAR  
Augmented Reality Link



**Kōrero mai**  
Contact us

06 871 5350  
info@waingakau.co.nz  
www.waingakau.co.nz



Section 600 m<sup>2</sup>



House 145 m<sup>2</sup>



Bedroom 3



Bathroom 2

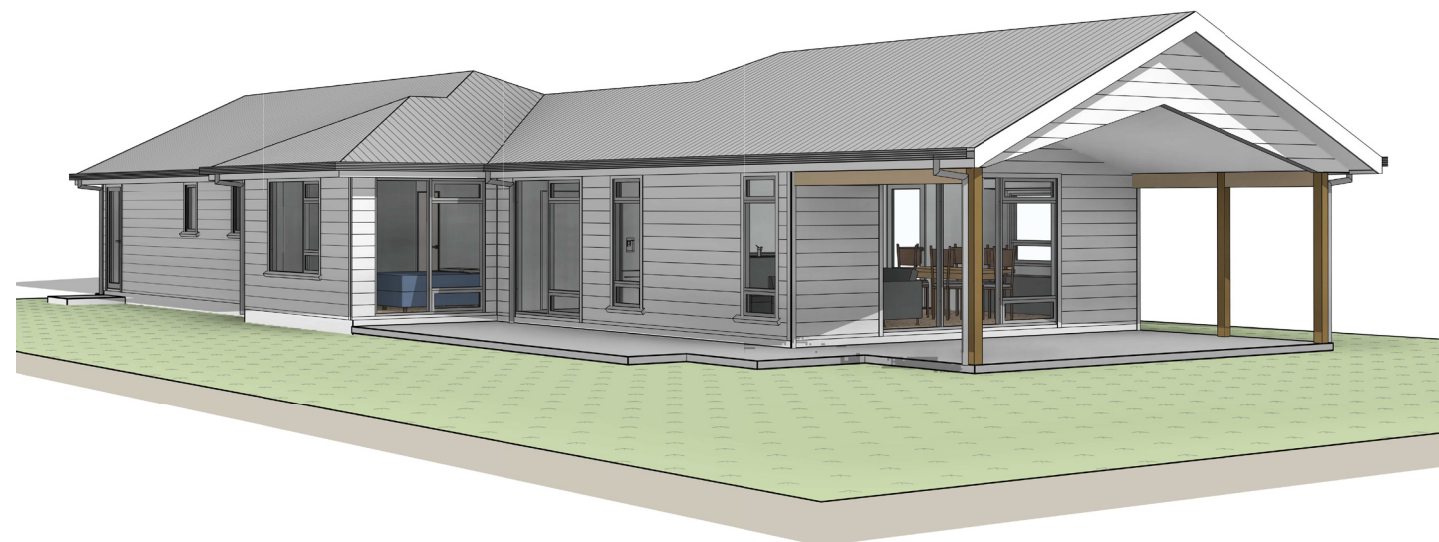


Garage 1

**FOR SALE**

**24 Tarbet Street**

**LOT  
14**



Section 600 m<sup>2</sup>



House 145 m<sup>2</sup>



Bedroom 3



Bathroom 2



Garage 1

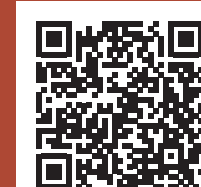
## THE GRAND ENTRANCE

The scene is set with a stunning covered front patio with high ceilings, providing a superbly functional space, positioned for the afternoon sun, perfect for unwinding after work. Step through into the large inviting living and dining area into the open kitchen, with a wrap-around bench providing plenty of space to host the whole whānau.

This 145m<sup>2</sup> property is fully insulated and carpeted throughout. Three double bedrooms, including an inviting master bedroom and walk-through wardrobe to a private ensuite. The family bathroom has a stunning tiled finish, with a full stand-alone bath and shower giving the feeling of luxury.

Positioned north facing on a 600m<sup>2</sup> corner section, this whare is designed to be passively warm, dry, efficient and healthy by adopting the principles of Homestar 6. A digitally controlled Smartvent fully ducted ventilation system and the Daiken Inventor heatpump will keep your whānau cosy all year around.

Internal access garage is carpeted and fully insulated including the panel door, which adds further comfort and versatility to this extra space.



VISIT OUR WEBSITE & TAKE A VIRTUAL TOUR

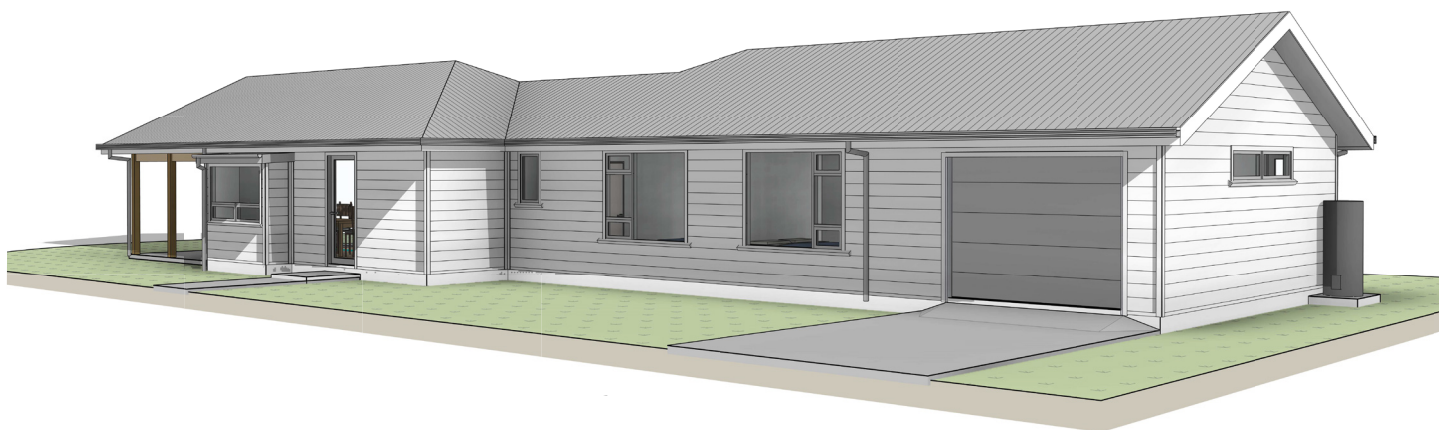
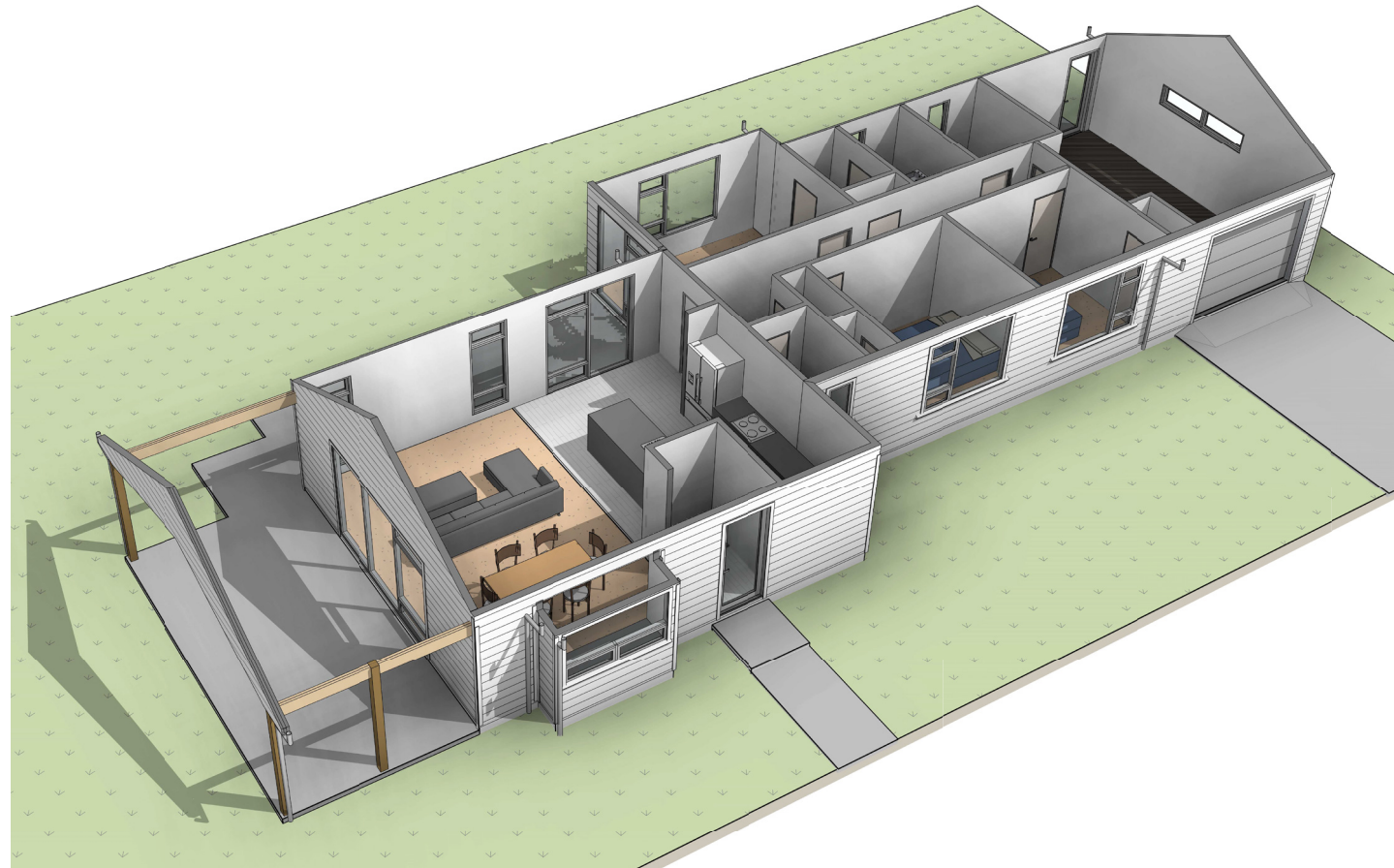
**Kōrero mai**  
Contact us

06 871 5350  
info@waingakau.co.nz  
www.waingakau.co.nz



# Artistic images

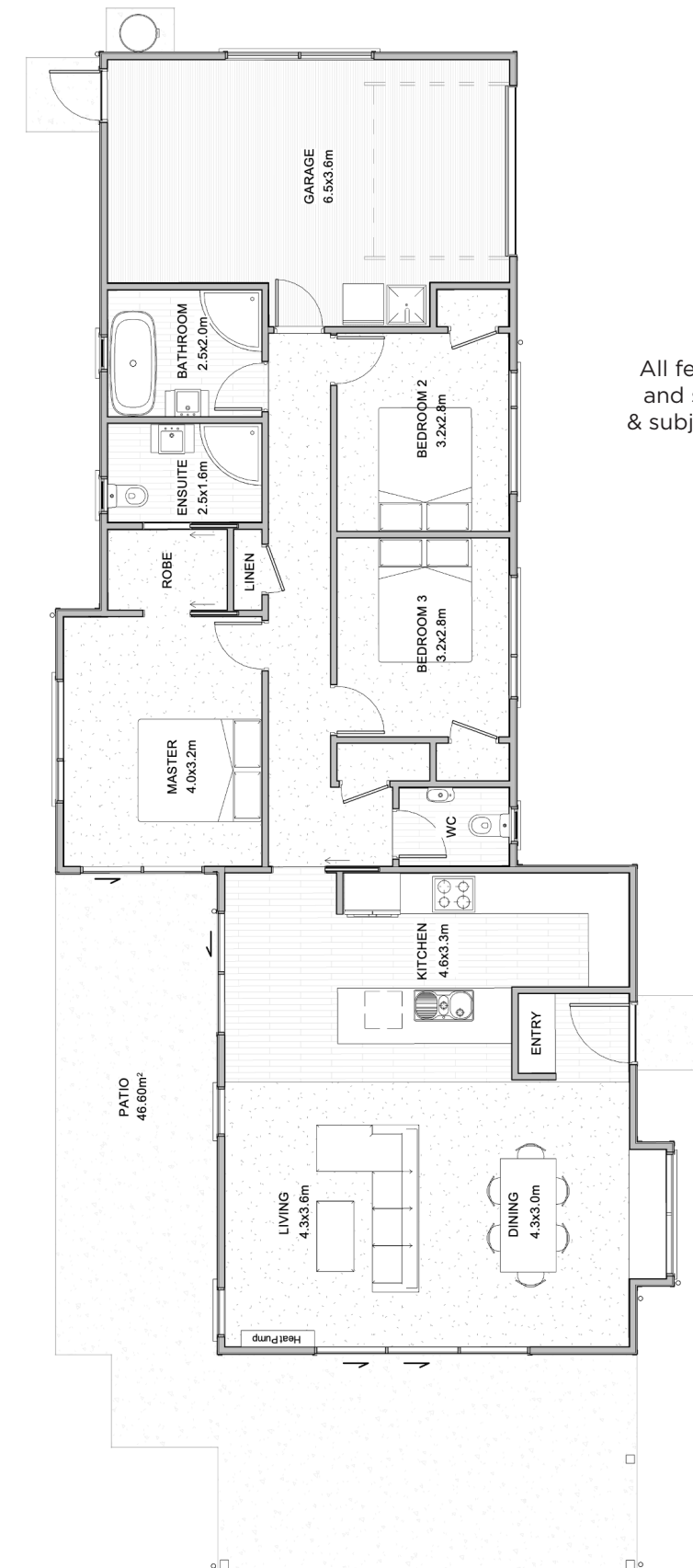
24 Tarbet  
Street



Tangata ako ana i te kāinga, te tūrangā ki te marae, tau ana

# Architectural floorplan

LOT  
14



**Please note:**  
All features, dimensions, colours  
and stylisation are approximate  
& subject to minor changes during  
construction.

  
Floor Plan

A person nurtured in the community contributes strongly to society