

Lot 14 (24 Tarbet Street)



PROPERTY FEATURES:

145 metre square, 3 bedroom, 2 bathroom, 1-car garage, grand corner location on a 600 m2 section

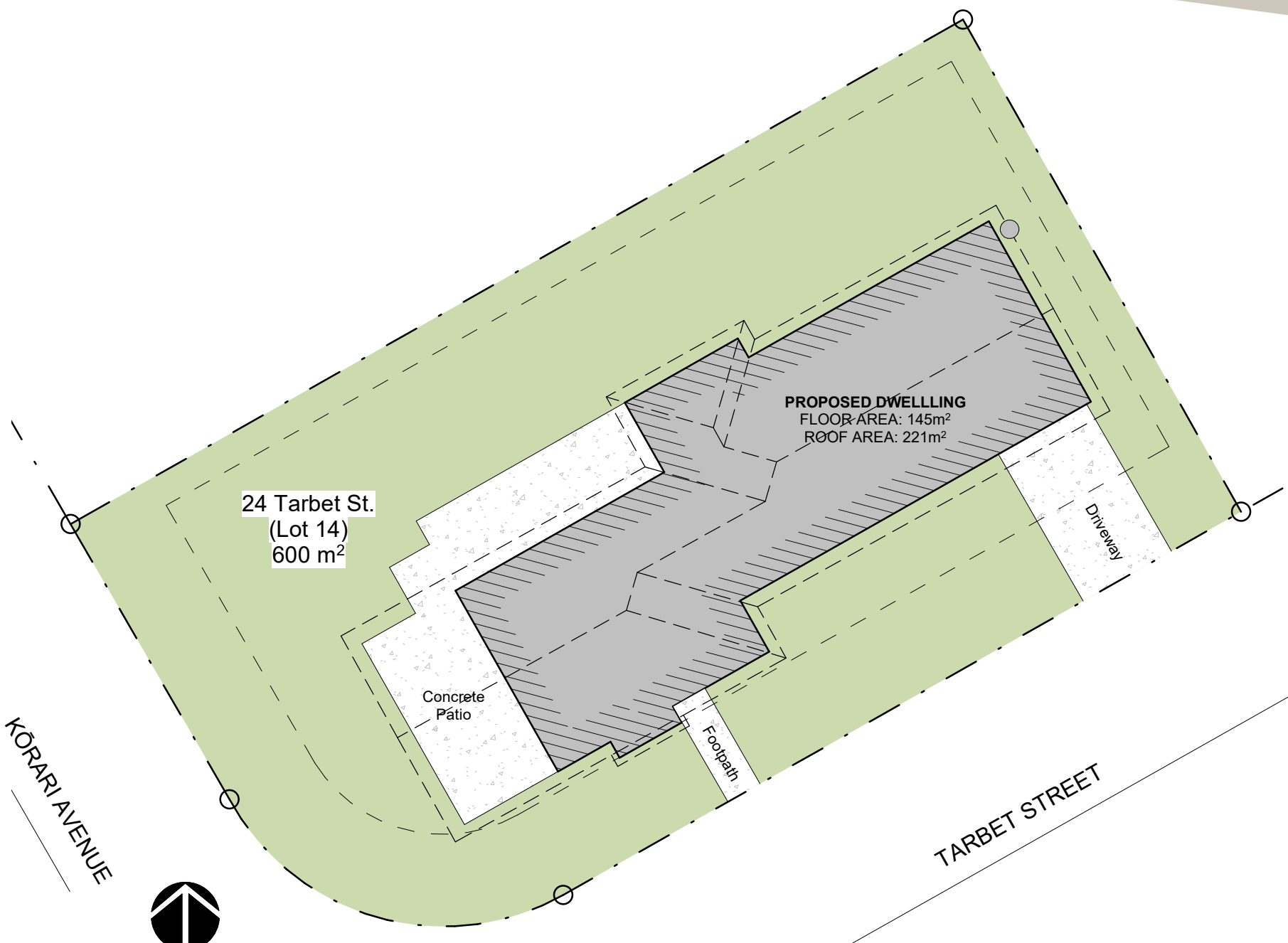
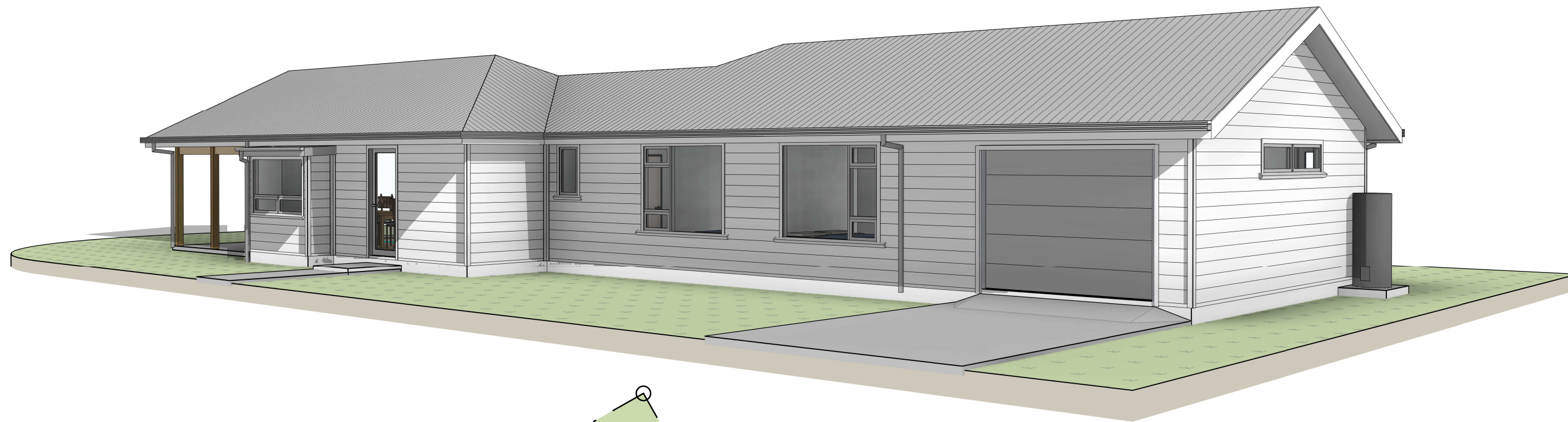
The Grand Entrance

The scene is set with a stunning covered front patio with high ceilings, providing a superbly functional space, positioned for the afternoon sun, perfect for unwinding after work. Step through into the large inviting living and dining area into the open kitchen, with wrap around bench providing plenty of space to host the whole whānau.

This 145m² property is fully insulated and carpeted throughout. Three double bedrooms, including an inviting master bedroom and walk-through wardrobe to a private ensuite. The family bathroom has a stunning tiled finish, with a full stand-alone bath and shower giving the feeling of luxury.

Positoned north facing on a 600m² corner section, this whare is designed to be passively warm, dry, efficent and healthy by adopting the principles of Homestar 6. A digitally controlled Smartvent fully ducted ventilation system and the Daiken Inventor heatpump will keep your whānau cosy all year around.

Internal access garage is carpeted and fully insulated including the panel door, which adds further comfort and versatility to this extra space.



Locality Plan
1:3000 @ A3

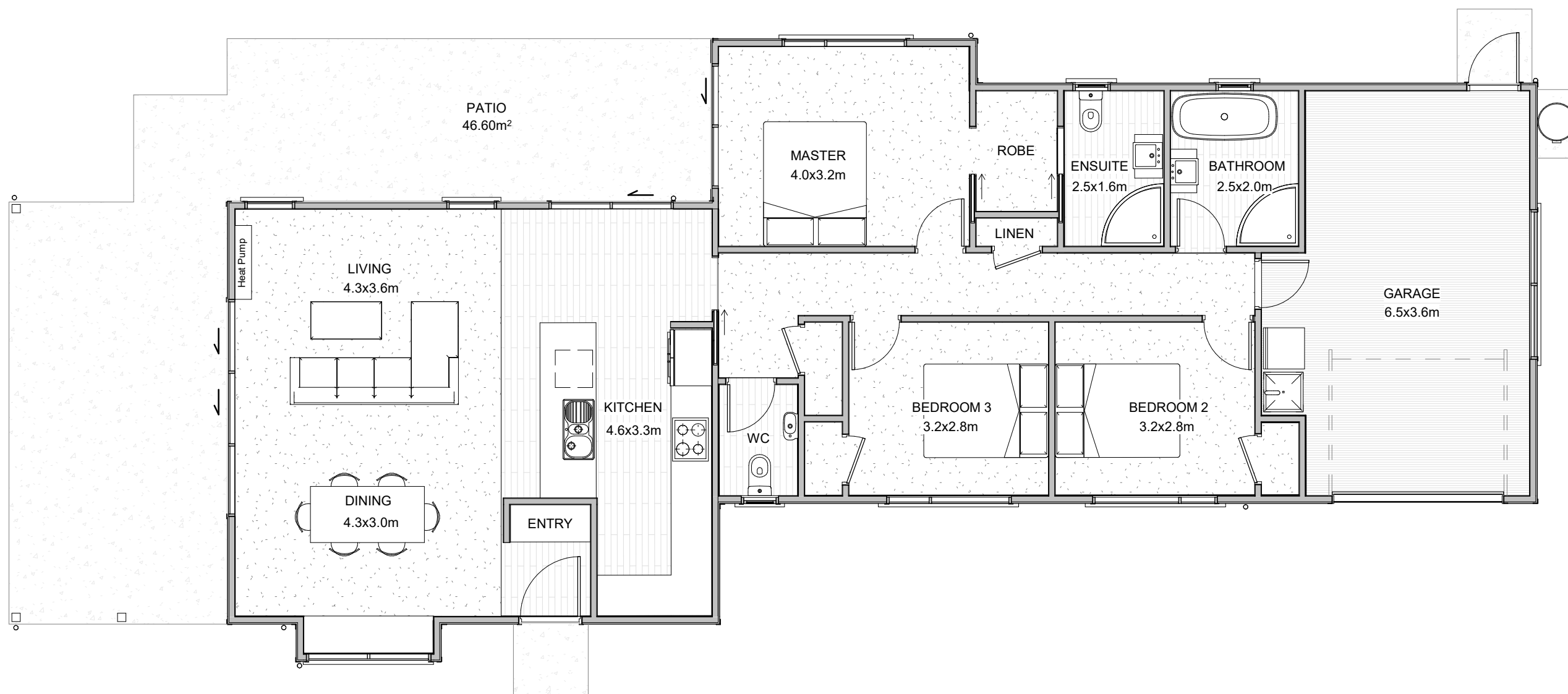
Site Plan
1:200 @ A3



Cover Sheet

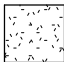


All features, dimensions, colours, finishes and locality are for display purposes only and are subject to change.

This drawing is copyright & remains the property of:



Floor Plan
1 : 75 @ A3

Floor Finishes:

-  Selected carpet over underlay
± 79m²
-  Selected Bathroom / Kitchen tiles
± 36m²
-  High-Traffic Garage carpet
± 26.00m²

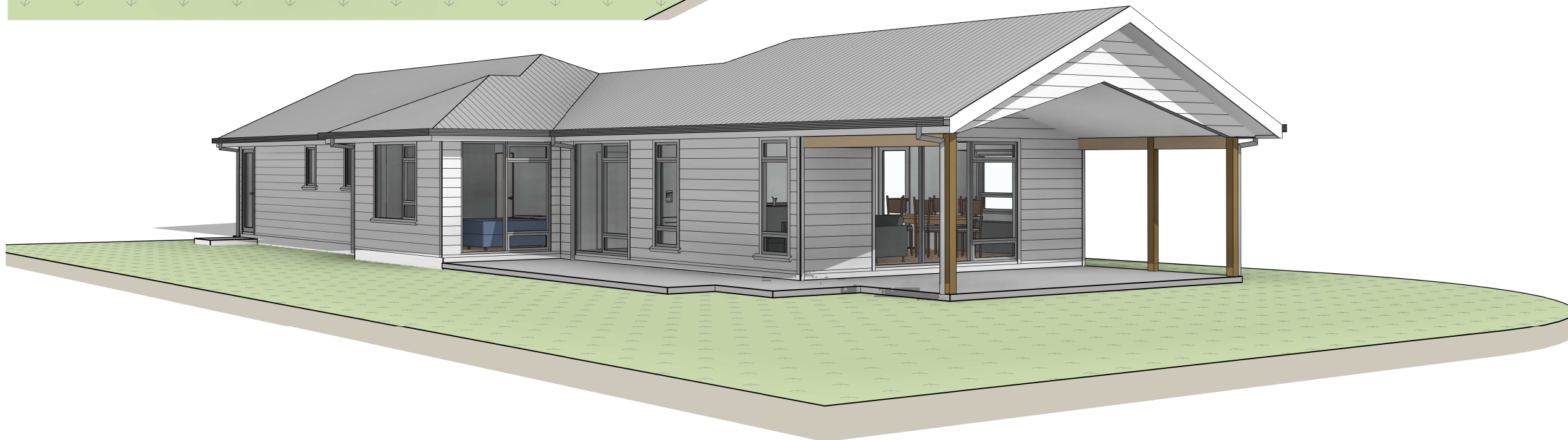
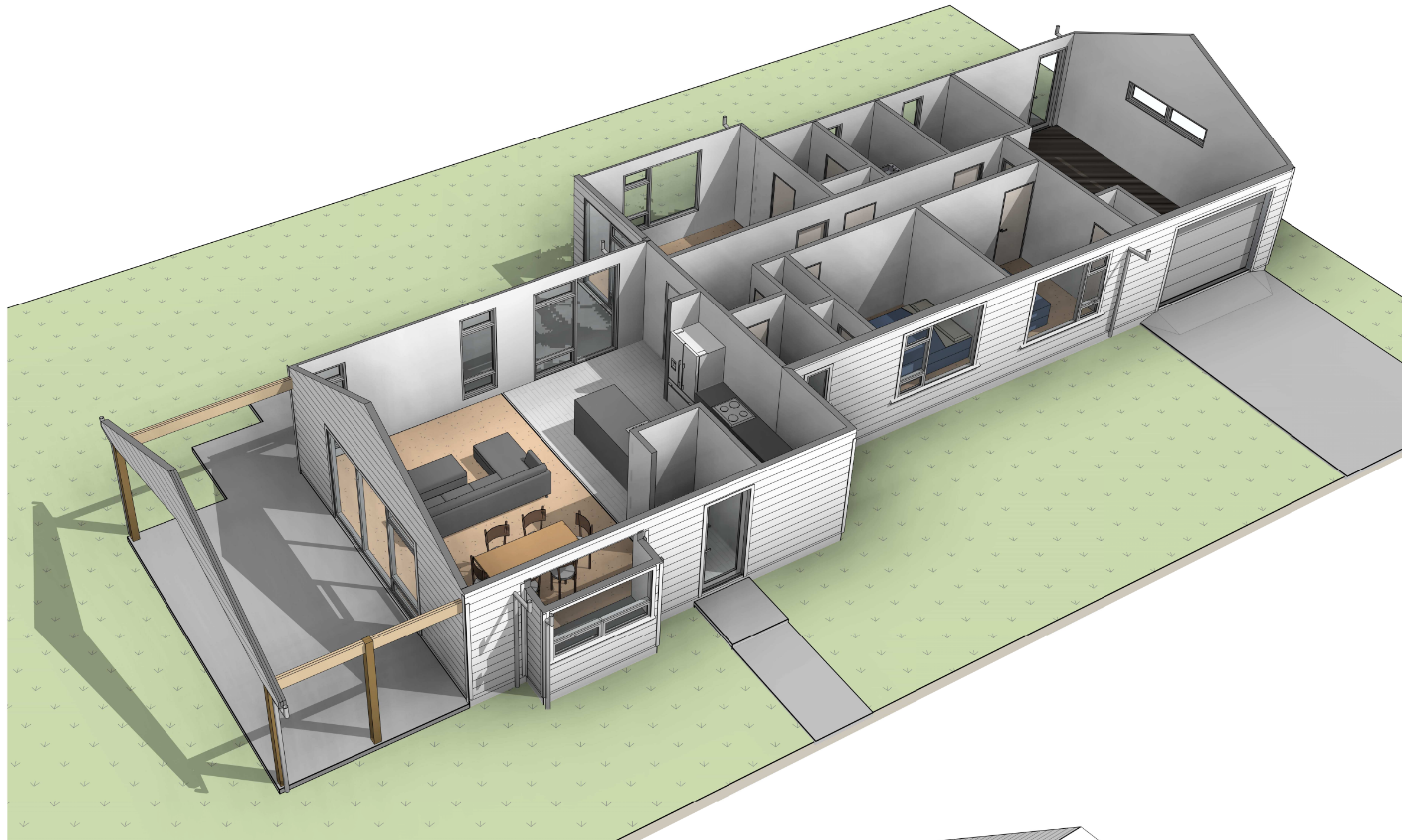


WAINGĀKAU
Housing Development Limited



SIMPLY ARCHITECTURE

Floor Plan



WAINGĀKAU
Housing Development Limited



SIMPLY ARCHITECTURE

3D Views

All features, dimensions, colours, finishes and locality are for display purposes only and are subject to change.

This drawing is copyright & remains the property of:

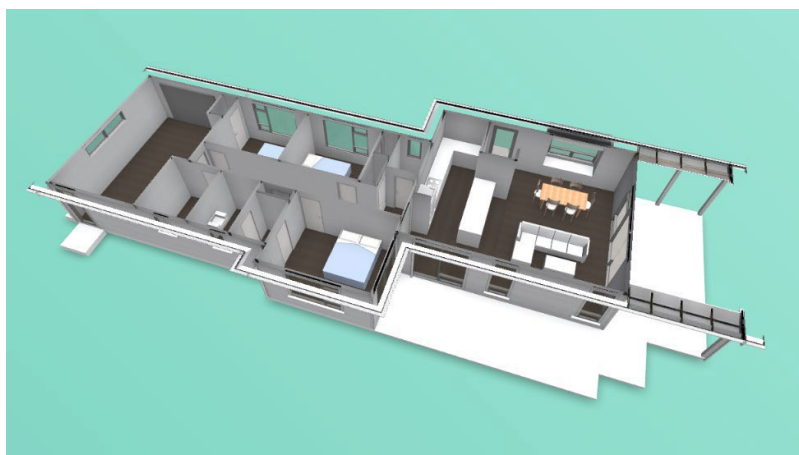


Waingākau Housing
Development Ltd

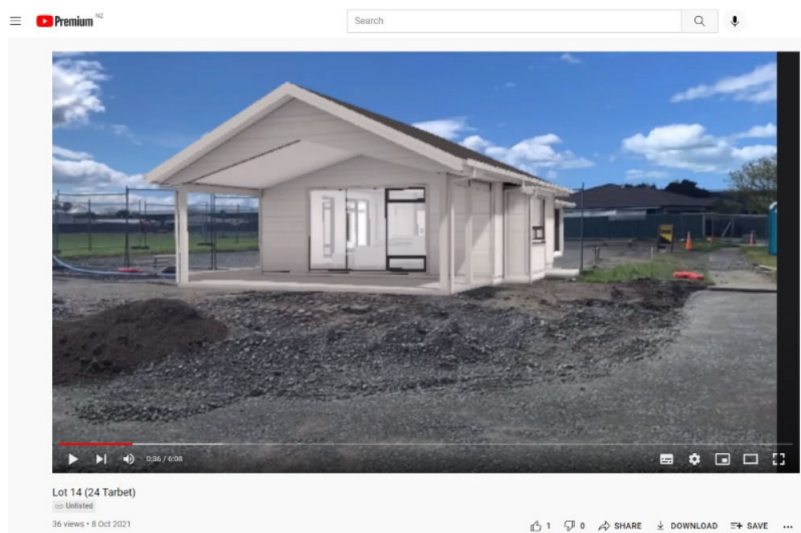
NOHO MAI
LIVE HERE



[HomeAR Augmented Reality Link](#)



[HomeAR Browser based 3D Link](#)



[Virtual Walk-through tour](#)

Kōrero mai

Contact us

Call: 06 871 5350

Email: info@waingakau.co.nz

www.waingakau.co.nz

Tangata ako ana i te kāinga, te tūrangā ki te marae, tau ana
A person nurtured in the community contributes strongly to society