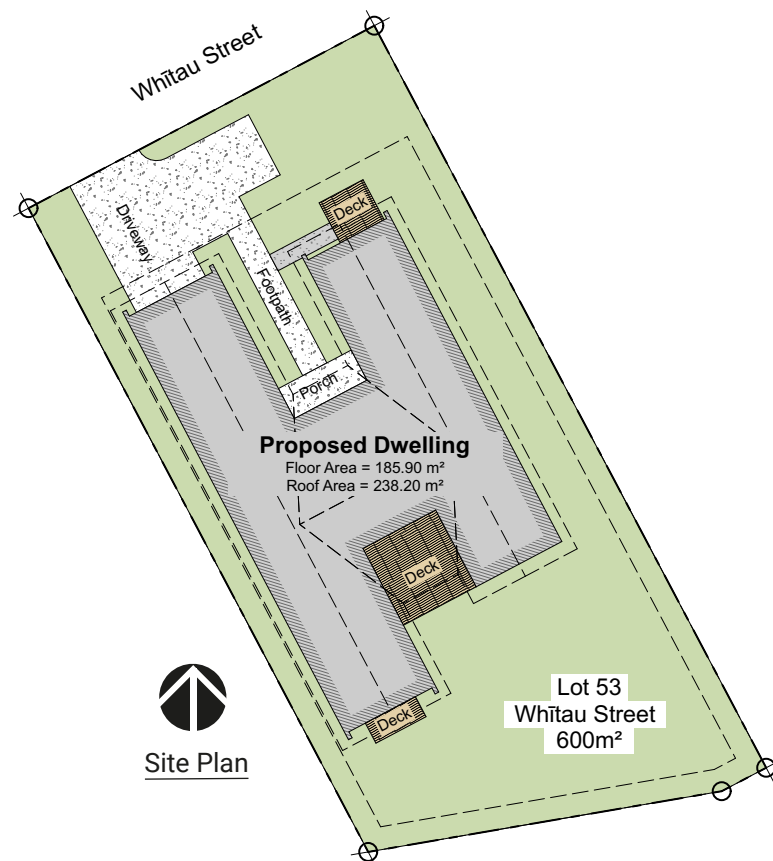


**FOR SALE**

**5 Whītau Street**

**LOT  
53**



HomeAR  
Augmented Reality Link



**Waingākau**

**Kōrero mai**  
Contact us

06 871 5350  
info@waingakau.co.nz  
www.waingakau.co.nz



Section 600 m<sup>2</sup>



House 186 m<sup>2</sup>



Bedroom 4



Bathroom 2

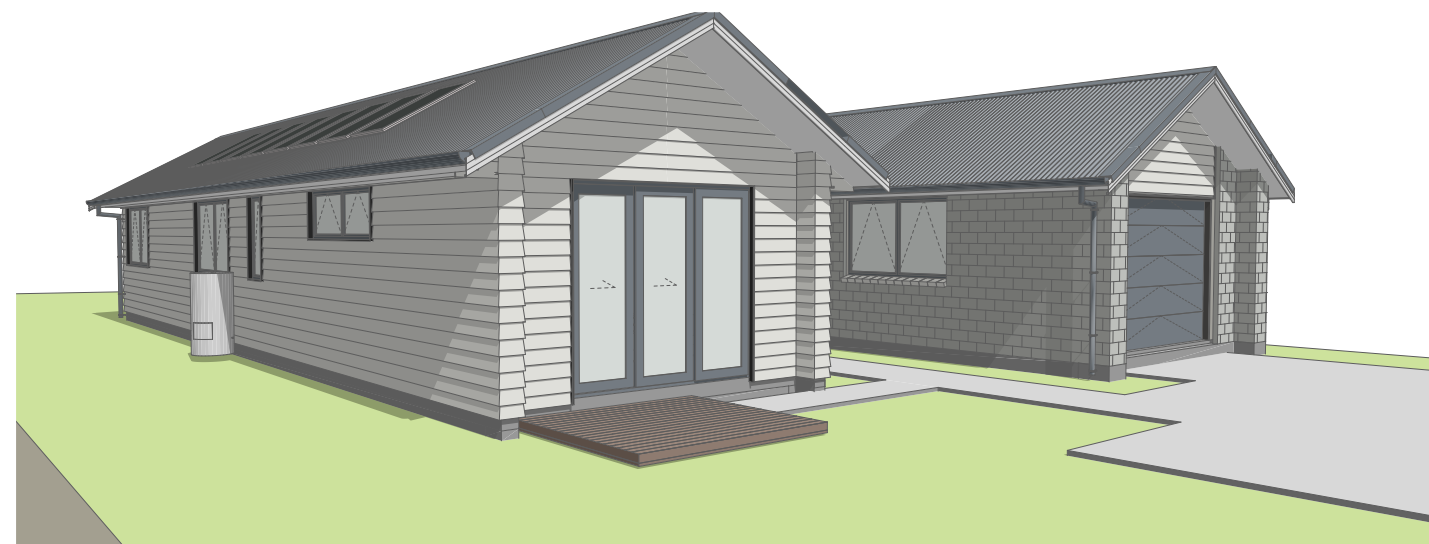


Garage 1.5

**FOR SALE**

**5 Whītau Street**

**LOT  
53**



Section 600 m<sup>2</sup>



House 186 m<sup>2</sup>



Bedroom 4



Bathroom 3



Garage 1.5

## ATTACHED LIVING

Nau mai, Haramai! This is a one-of-a-kind opportunity just waiting patiently for its forever whānau to call it home.

A lovely arranged living area takes center stage with the kitchen, dining area and lounge, which opens outdoors to the covered patio that overlooks the striking back yard. Three double bedrooms, along with a family bathroom, and separate toilet. At the tip of the house, you'll find the single garage, which has been constructively designed to possibly be an additional living space.

To add extra value to the whare is the Attached Living; an area ideal for Nan, Koro or even another small whānau who bring their own value, in either Equity or a second (or third) income. This area is finished with a beautifully tiled ensuite, kitchenette, and space to fit a modest dining set whilst still leaving more than enough room to move around. Not only does having its own entranceway uphold the independence of those occupying it but it also has its own outdoor living area and off-street carpark.



VISIT OUR WEBSITE & TAKE A VIRTUAL TOUR

**Kōrero mai**  
Contact us

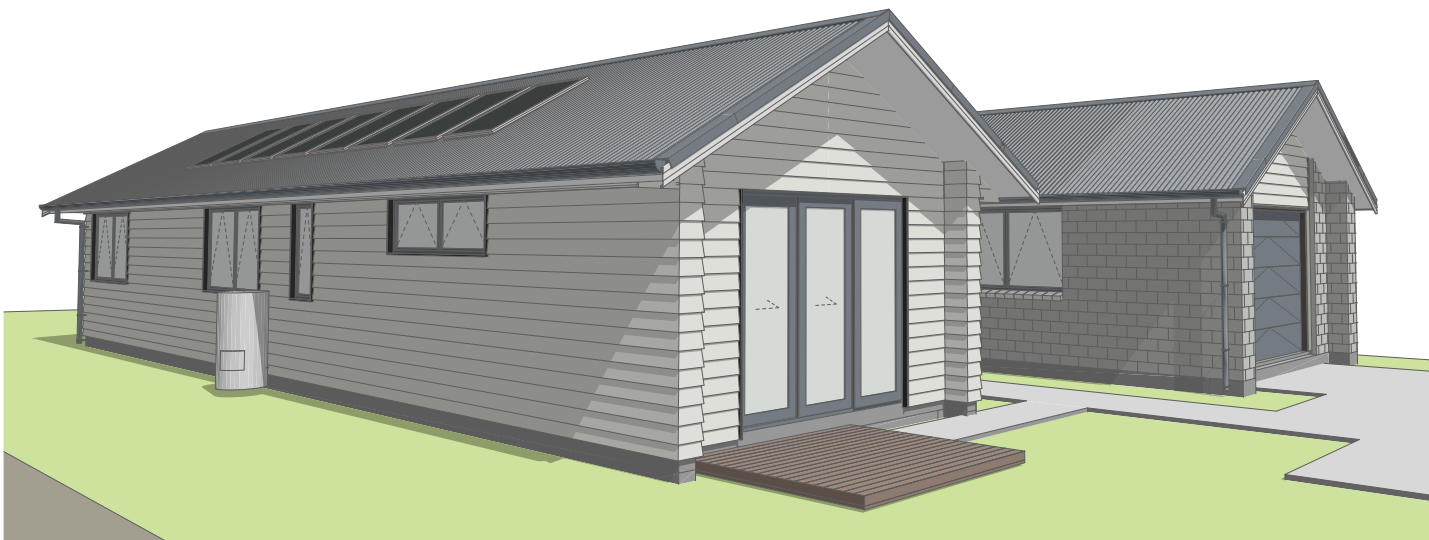
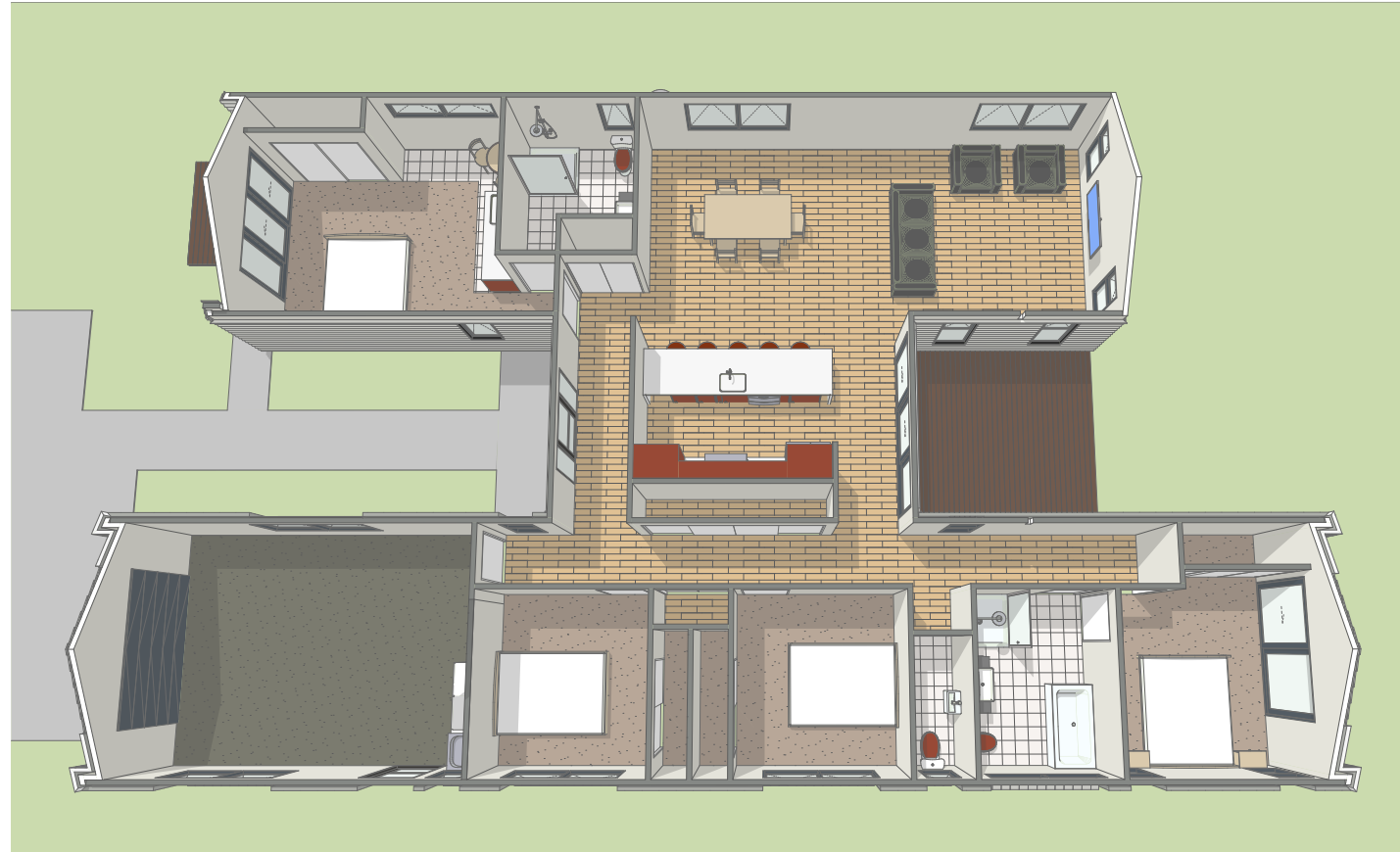
06 871 5350  
info@waingakau.co.nz  
www.waingakau.co.nz



**Waingākau**

# Artistic images

5 Whītau Street



Tangata ako ana i te kāinga, te tūrangā ki te marae, tau ana

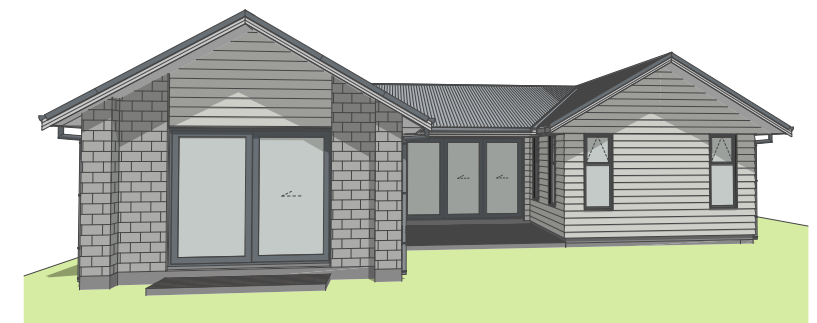
# Architectural floorplan

LOT 53



Floor Plan

**Please note:**  
All features, dimensions, colours and stylisation are approximate & subject to minor changes during construction.



A person nurtured in the community contributes strongly to society