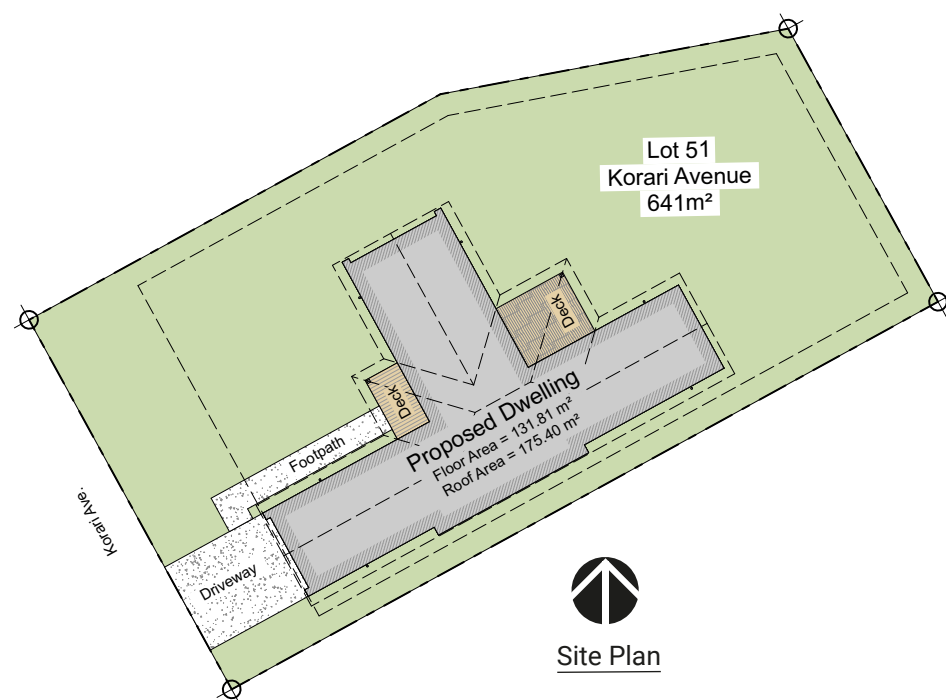


FOR SALE

50 Kōrari Avenue

**LOT
51**



Site Plan



HomeAR
Augmented Reality Link



Waingākau

Kōrero mai
Contact us

06 871 5350
info@waingakau.co.nz
www.waingakau.co.nz



Section 641 m²



House 133 m²



Bedroom 3



Bathroom 2



Garage 1

FOR SALE

50 Kōrari Avenue

**LOT
51**



Section 641 m²



House 132 m²



Bedroom 3



Bathroom 2



Garage 1

OBTAINABLE HOME

A beautiful efficient 132m2 whare that sits proudly on a 641m2 section at the top of Kōrari Ave. This smaller whare is more obtainable for the whānau on a budget, however the features are packed into this gem.

A contemporary designed kitchen and large breakfast bar is made for the entertainer in you to wine and dine family and friends. The easy flow of the open plan dining and living extends to an impressive north facing covered patio that makes year-round entertainment a breeze, it's the place to be on those stunning Hawkes Bay days.

This home has all the fundamental features for relaxed family living, including integral single-garage, double glazing argon filled windows, heatpump and mechanical ventilation system. Three spacious bedrooms with built-in double wardrobes and a luxurious tiled finished family bathroom with a stand-alone bath and shower. Additional storage is provided in the ceiling space and extra shelving above the laundry in the garage.

Harnessing the sun's energy, this three-bedroom whare is designed to be Solar Powered. This includes, an external heat pump hot water cylinder, six solar roof panels, inverter, and smart meter. Whilst the system can receive batteries, they are not included.



VISIT OUR WEBSITE & TAKE A VIRTUAL TOUR

Kōrero mai
Contact us

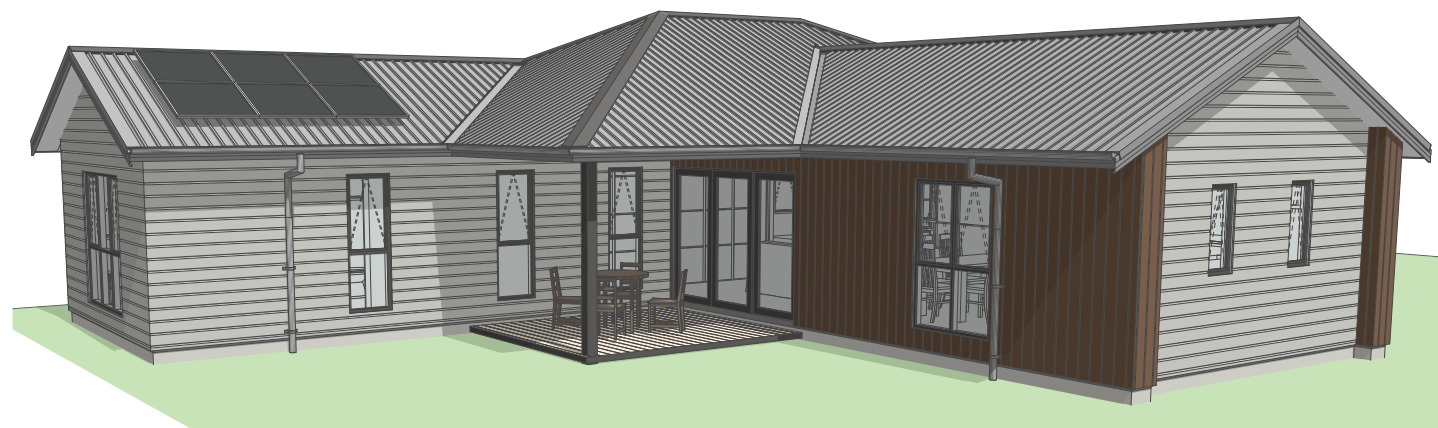
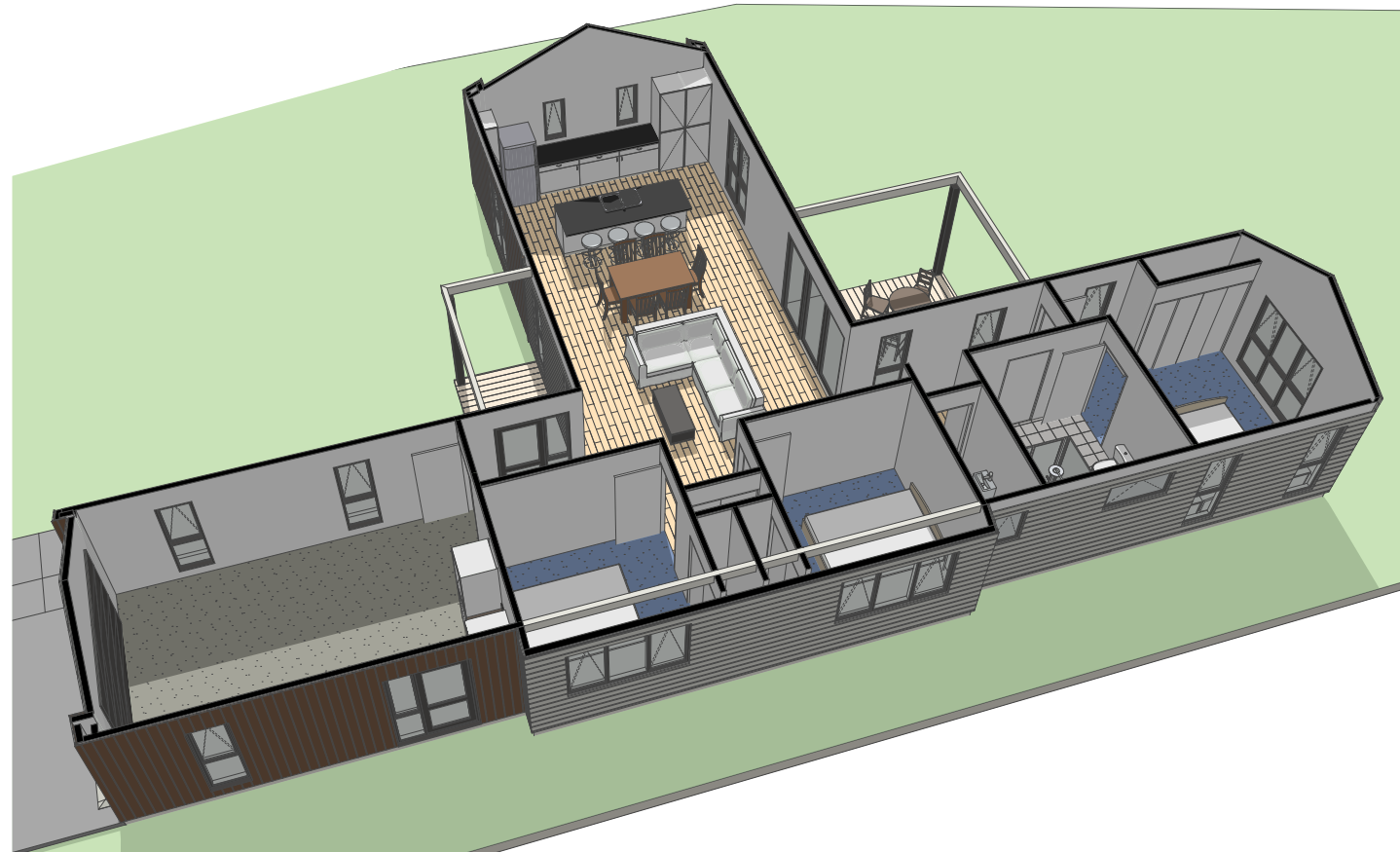
06 871 5350
info@waingakau.co.nz
www.waingakau.co.nz



Waingākau

Artistic images

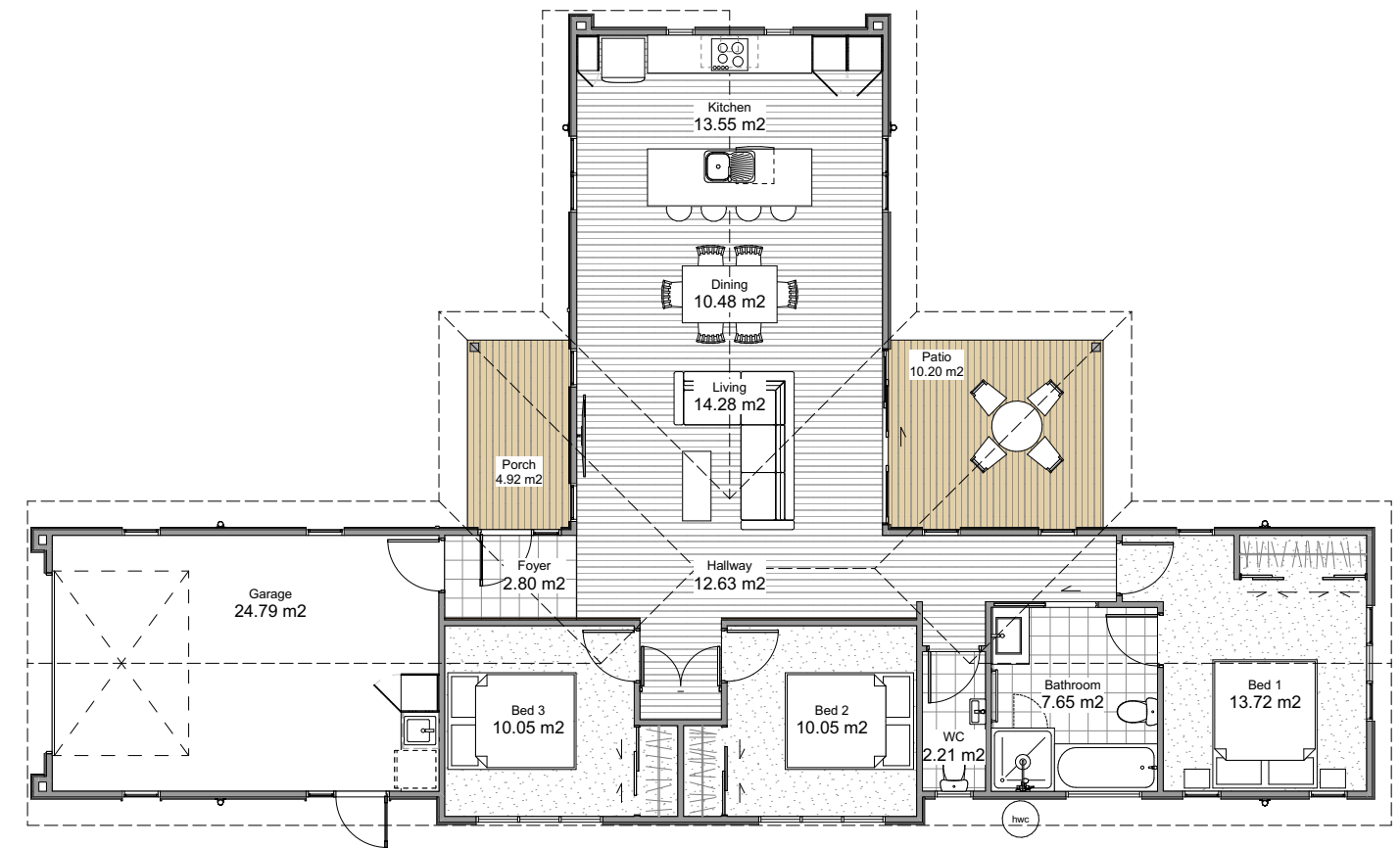
50 Korari Avenue



Tangata ako ana i te kāinga, te tūranga ki te marae, tau ana

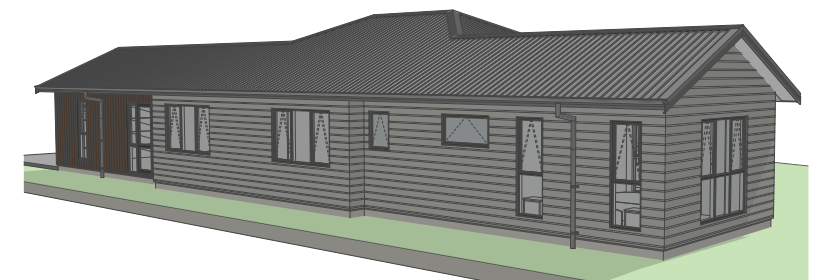
Architectural floorplan

LOT
51



Floor Plan

Please note:
All features, dimensions, colours
and stylisation are approximate
& subject to minor changes
during construction.



A person nurtured in the community contributes strongly to society