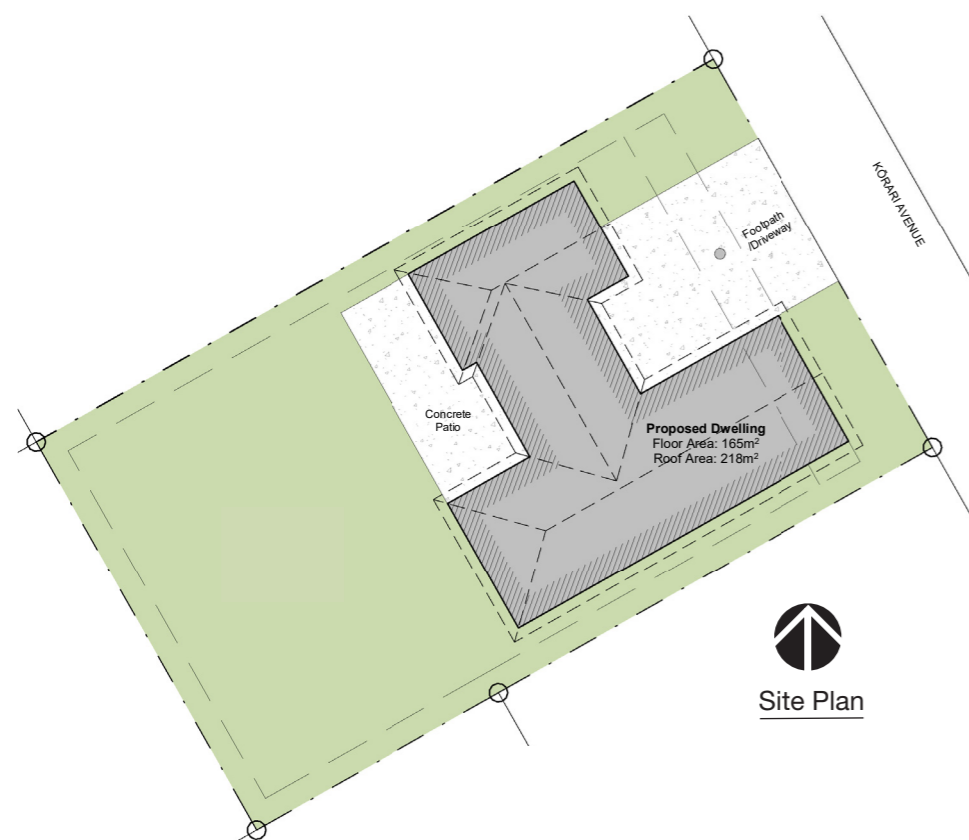


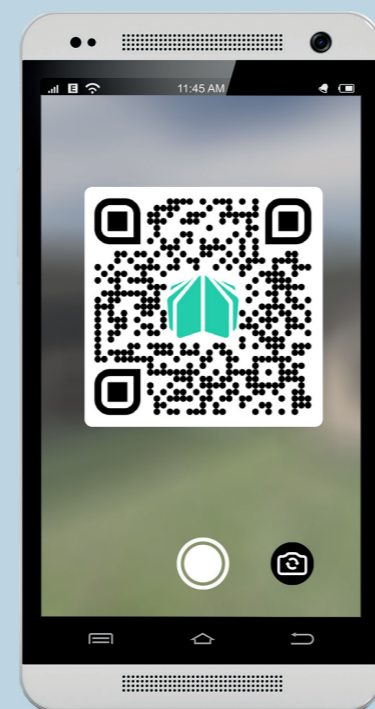
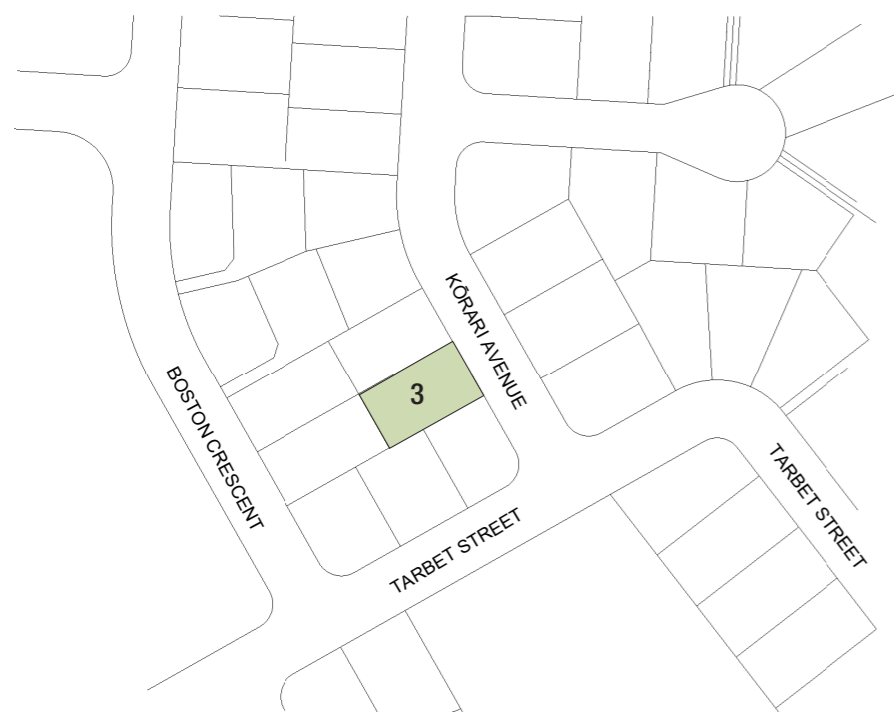
**FOR SALE**

**3 Kōrari Avenue**

**LOT  
4**



Site Plan



HomeAR  
Augmented Reality Link



**Kōrero mai**  
Contact us

06 871 5350  
info@waingakau.co.nz  
www.waingakau.co.nz



Section 644 m<sup>2</sup>



House 165 m<sup>2</sup>



Bedroom 4



Bathroom 2

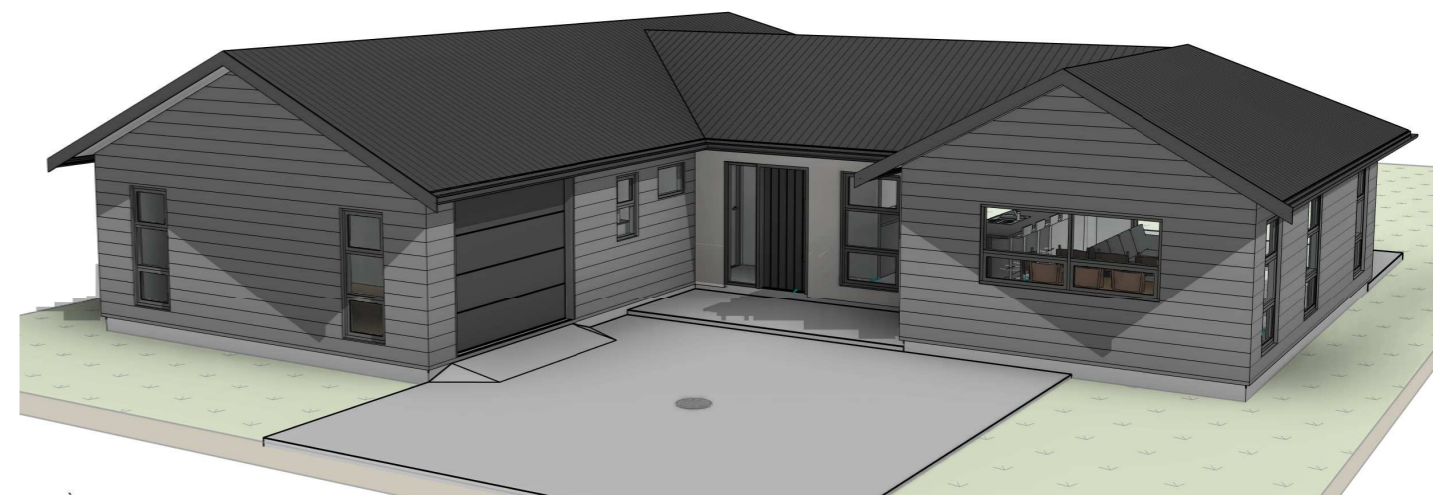


Garage 1

**FOR SALE**

**3 Kōrari Avenue**

**LOT  
4**



Section 644 m<sup>2</sup>



House 165 m<sup>2</sup>



Bedroom 4



Bathroom 2



Garage 1

## WELCOME HOME

This exquisite four-bedroom family home skilfully utilises space and light to produce a warm yet functional family home on a 644 m<sup>2</sup> section, ready for you to add your own stylish touches.

A warm welcome greets you as you enter into the open plan living and dining area and an easy access outdoors to a magnificent patio. The home is built north-facing to ensure maximised light to living areas.

This family home is set with three generous bedrooms. The family bathroom is equipped with a full stand-alone bath and shower, with a separate toilet. The master bedroom is accompanied by a striking ensuite and walk in wardrobe.

From family cricket games to the kids setting up camp, this generous backyard is ideal for the whole whānau to enjoy.

This home comes with an efficient Solar Enabled 300 litre external hot water cylinder. This makes it straightforward for whānau to retrofit and invest into Solar roof panels easily at a later date.



VISIT OUR WEBSITE & TAKE A VIRTUAL TOUR

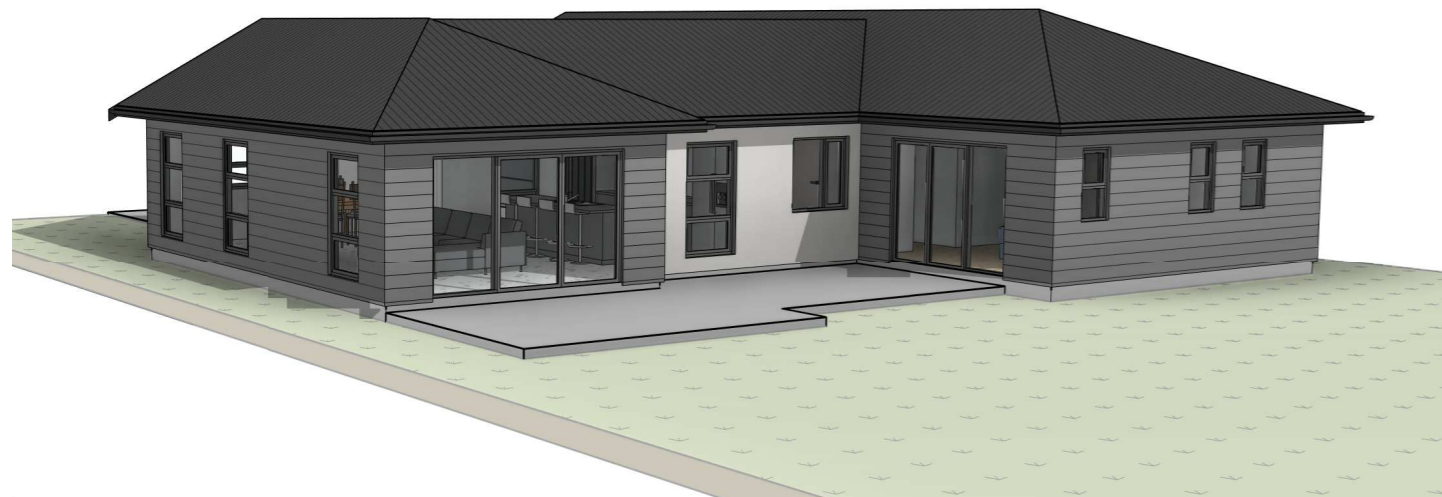
**Kōrero mai**  
Contact us

06 871 5350  
info@waingakau.co.nz  
www.waingakau.co.nz



# Artistic images

3 Kōrari Avenue



Tangata ako ana i te kāinga, te tūranga ki te marae, tau ana

# Architectural floorplan

LOT  
4



**Please note:**  
All features, dimensions, colours  
and stylisation are approximate  
& subject to minor changes during  
construction.



A person nurtured in the community contributes strongly to society