

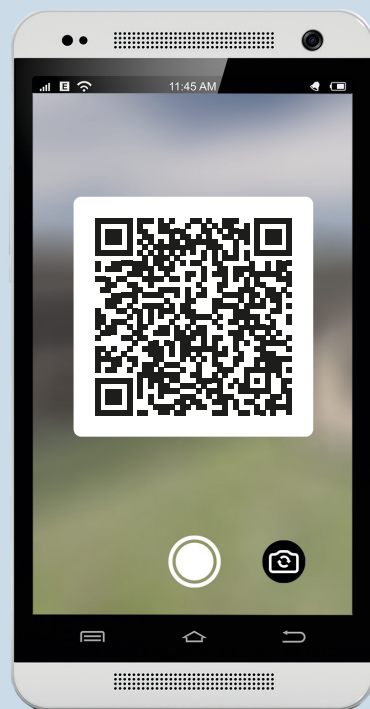
FOR SALE

38 Kōrari Avenue

**LOT
46**



Site Plan

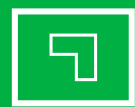


HomeAR
Augmented Reality Link



Kōrero mai
Contact us

06 871 5350
info@waingakau.co.nz
www.waingakau.co.nz



Section 663 m²



House 132 m²



Bedroom 3



Bathroom 2

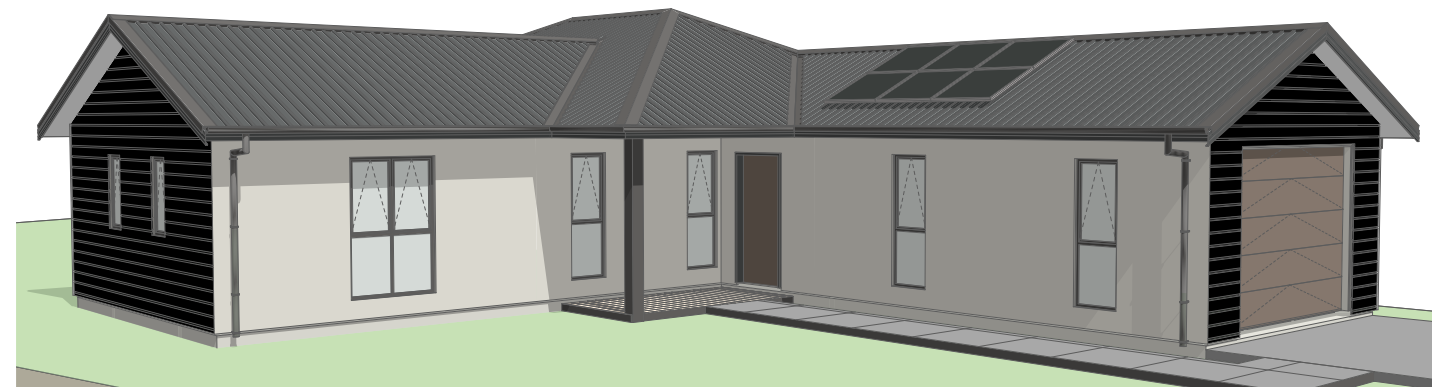


Garage 1

FOR SALE

38 Kōrari Avenue

**LOT
46**



Section 663 m²



House 132 m²



Bedroom 3



Bathroom 2



Garage 1

OBTAINABLE HOME

Presenting attention to detail in this luxurious new build. This smaller home is more obtainable for the whānau on a budget, a young professional couple or even for those looking to downsize after the kids leave the nest. However, don't let the size change perspective - the quality and features are packed into this gem.

The covered front entrance leads into the bright and lively open plan living and dining room. The exquisite kitchen has ample storage and excellent preparation and cooking facilities with bi-fold doors leading to an impressive, covered pine deck for the morning cuppa and outdoor dining. Three double bedrooms, a generous bathroom with modern vanity, standalone tub, and shower. The single garage is fully insulated, creating fourth space, great for weekend visitors, man cave or your toys. Additional storage is provided in the ceiling space and extra shelving above the laundry in the garage.

Harnessing the sun's energy, this home is designed to be Solar Powered. This includes, an external heat pump hot water cylinder, six solar roof panels, inverter, and smart meter. Whilst the system can receive batteries, they are not included.



VISIT OUR WEBSITE & TAKE A VIRTUAL TOUR

Kōrero mai
Contact us

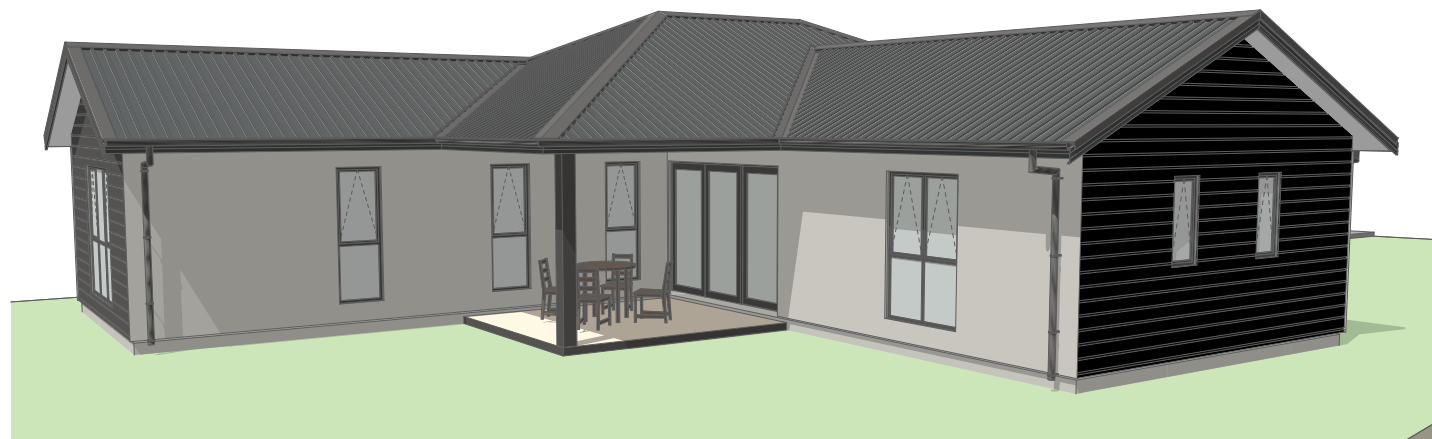
06 871 5350
info@waingakau.co.nz
www.waingakau.co.nz



Waingākau

Artistic images

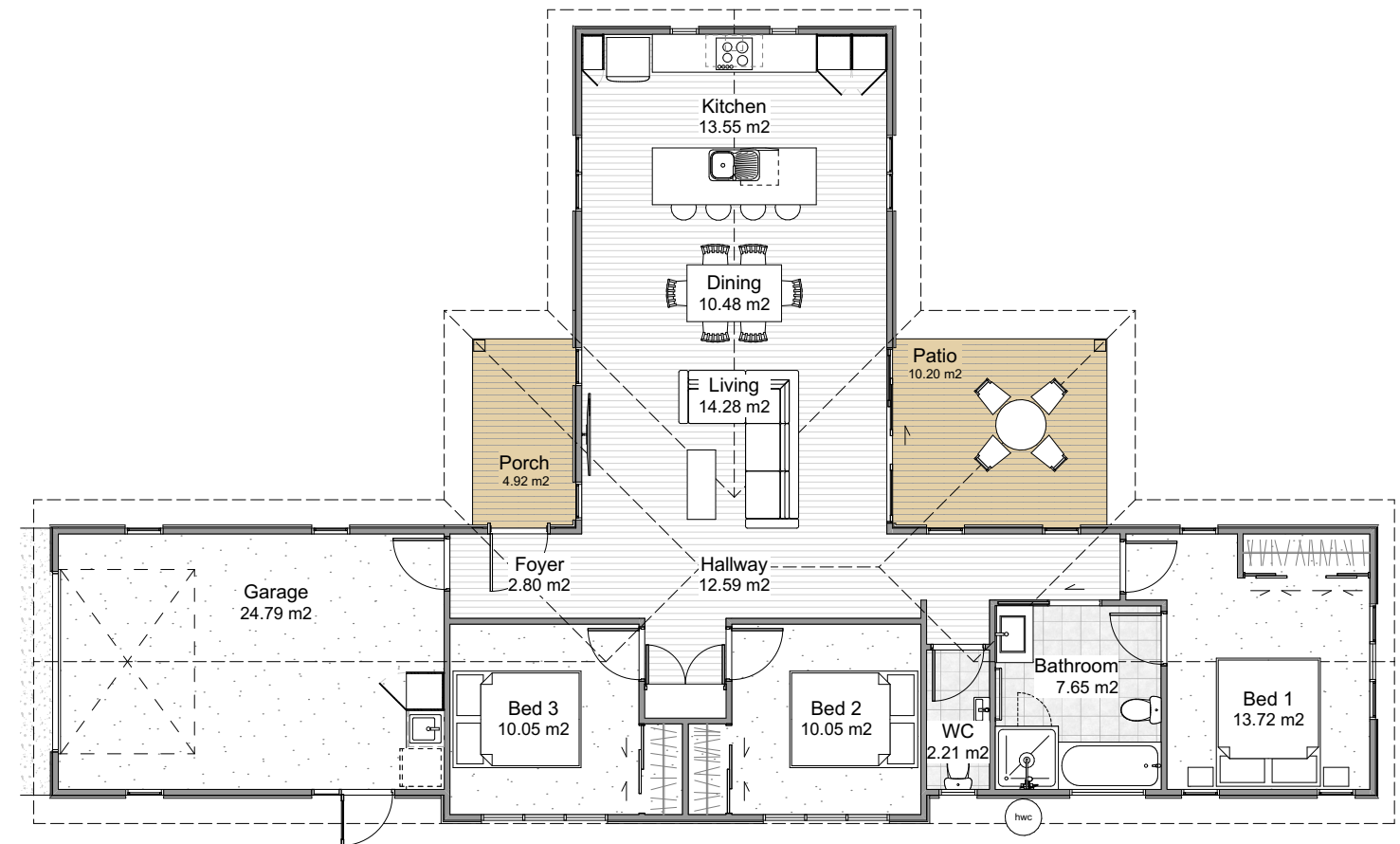
38 Kōrari Avenue



Tangata ako ana i te kāinga, te tūranga ki te marae, tau ana

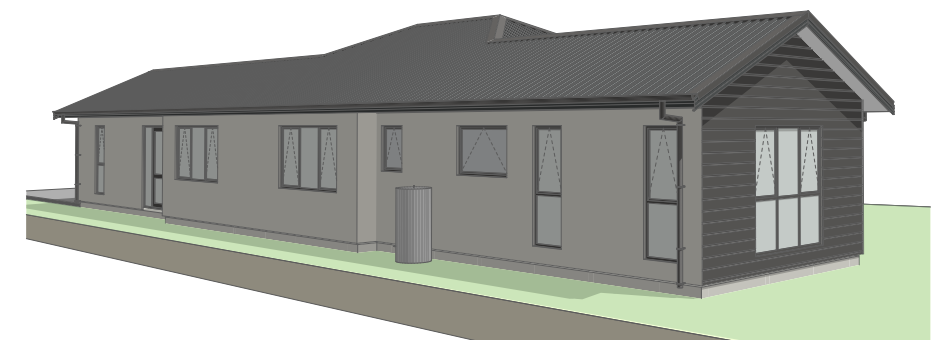
Architectural floorplan

LOT
46



Floor Plan

Please note:
All features, dimensions, colours
and stylisation are approximate
& subject to minor changes
during construction.



A person nurtured in the community contributes strongly to society