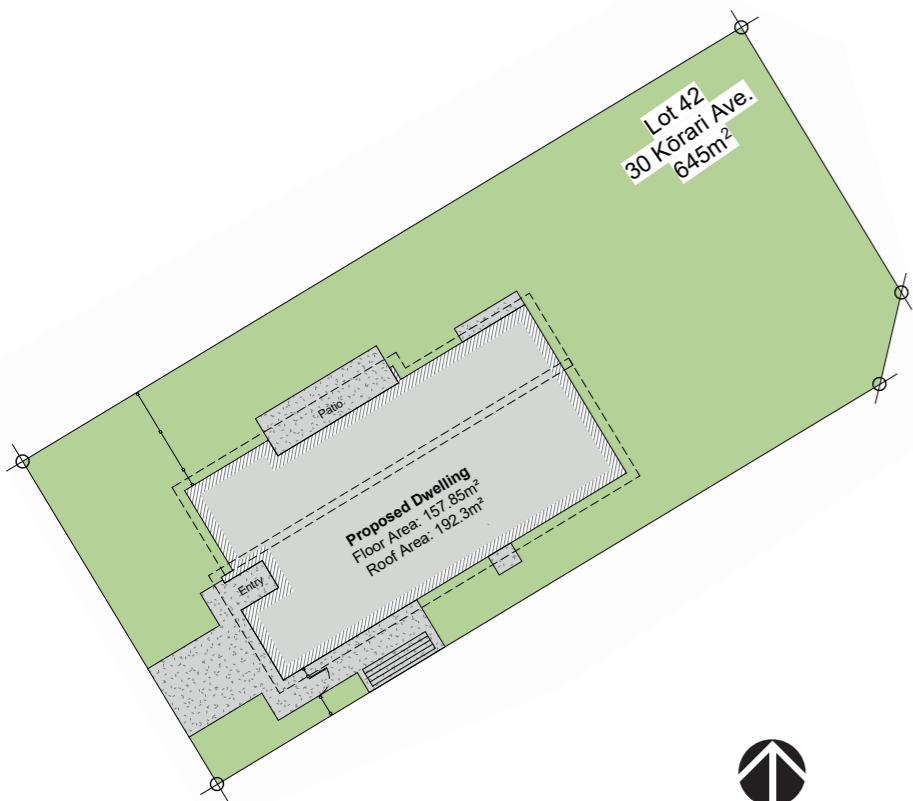


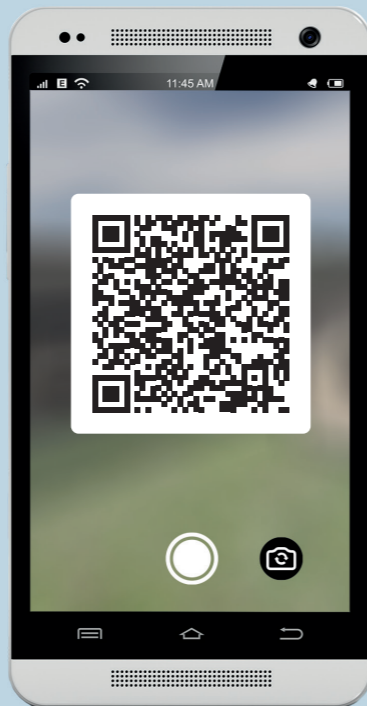
**FOR SALE**

**30 Kōrari Avenue**

**LOT 42**



Site Plan



HomeAR  
Augmented Reality Link



**Kōrero mai**  
Contact us  
06 871 5350  
info@waingakau.co.nz  
www.waingakau.co.nz



Section 645 m<sup>2</sup>



House 158 m<sup>2</sup>



Bedroom 4



Bathroom 2



Garage 1

**FOR SALE**

**30 Kōrari Avenue**

**LOT 42**



Section 645 m<sup>2</sup>



House 158 m<sup>2</sup>



Bedroom 4



Bathroom 2



Garage 1

## STANDARD YET OUTSTANDING

Located in the midst of Waingākau is a well-designed 158m<sup>2</sup> four-bedroom home finished with an exterior that stands out in the crowd.

This new and contemporary home is perfectly orientated for all day sun and to make the most of the generous fully fenced backyard. The large open plan kitchen, dining and living area is spacious, yet warm and welcoming. Although passively heated, a digitally controlled fully ducted mechanical ventilation system and the heat pump work together to keep the temperature perfect throughout the seasonal changes.

Internal access garage is carpeted and fully insulated including the panel garage door (with automatic opener) adds further versatility to this extra space. The four bedrooms are generous, and the master bedroom is large with its own exclusive deck. The family bathroom is beautifully tiled and finished with a large corner shower and standalone tub.

The right to move into this magnificent family home is now.



VISIT OUR WEBSITE & TAKE A VIRTUAL TOUR

**Kōrero mai**  
Contact us

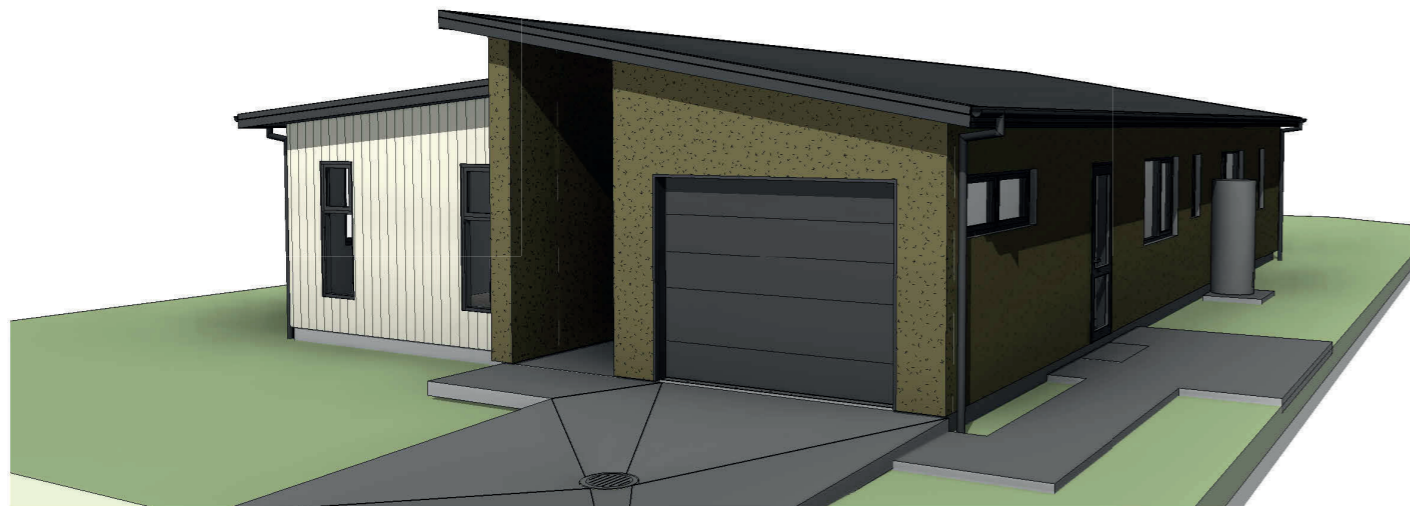
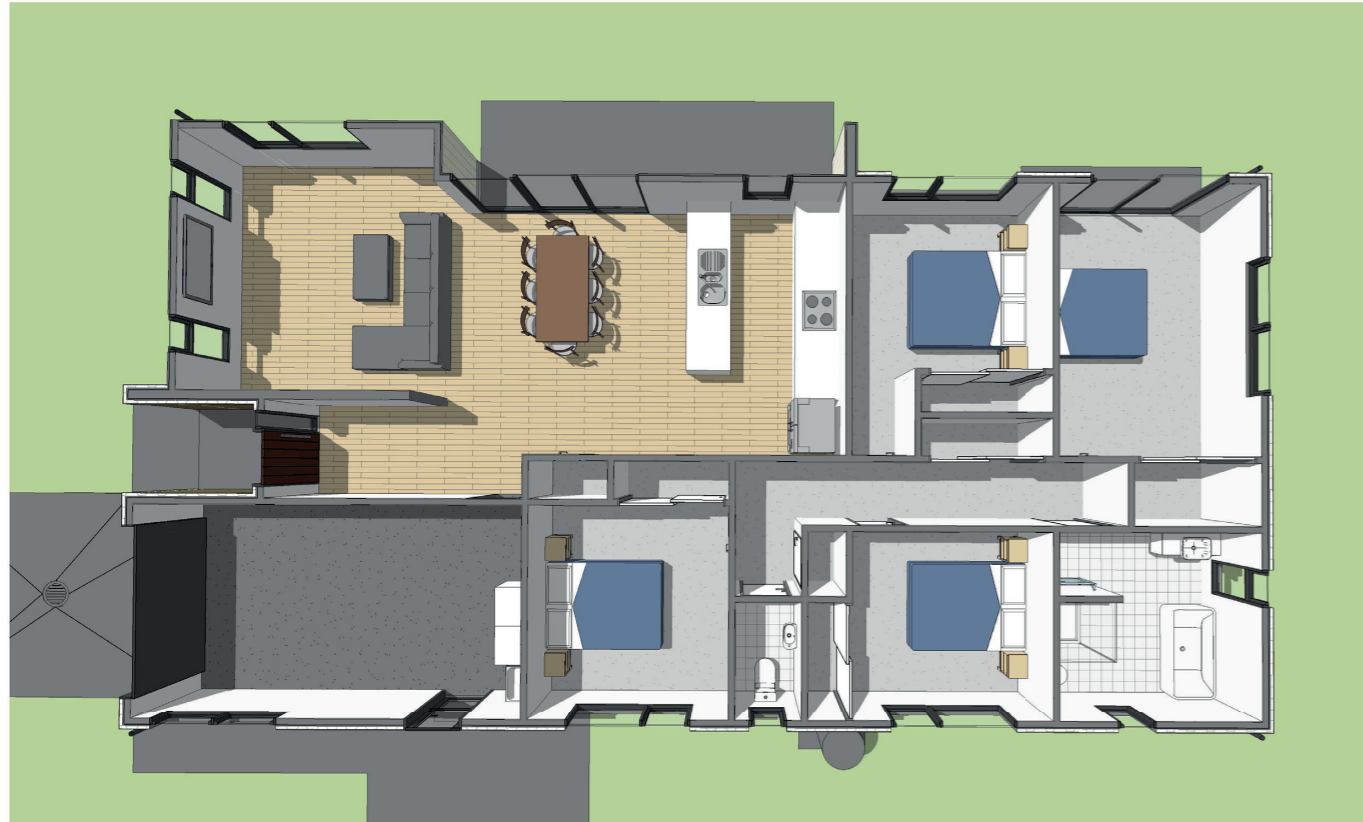
06 871 5350  
info@waingakau.co.nz  
www.waingakau.co.nz



**Waingākau**

# Artistic images

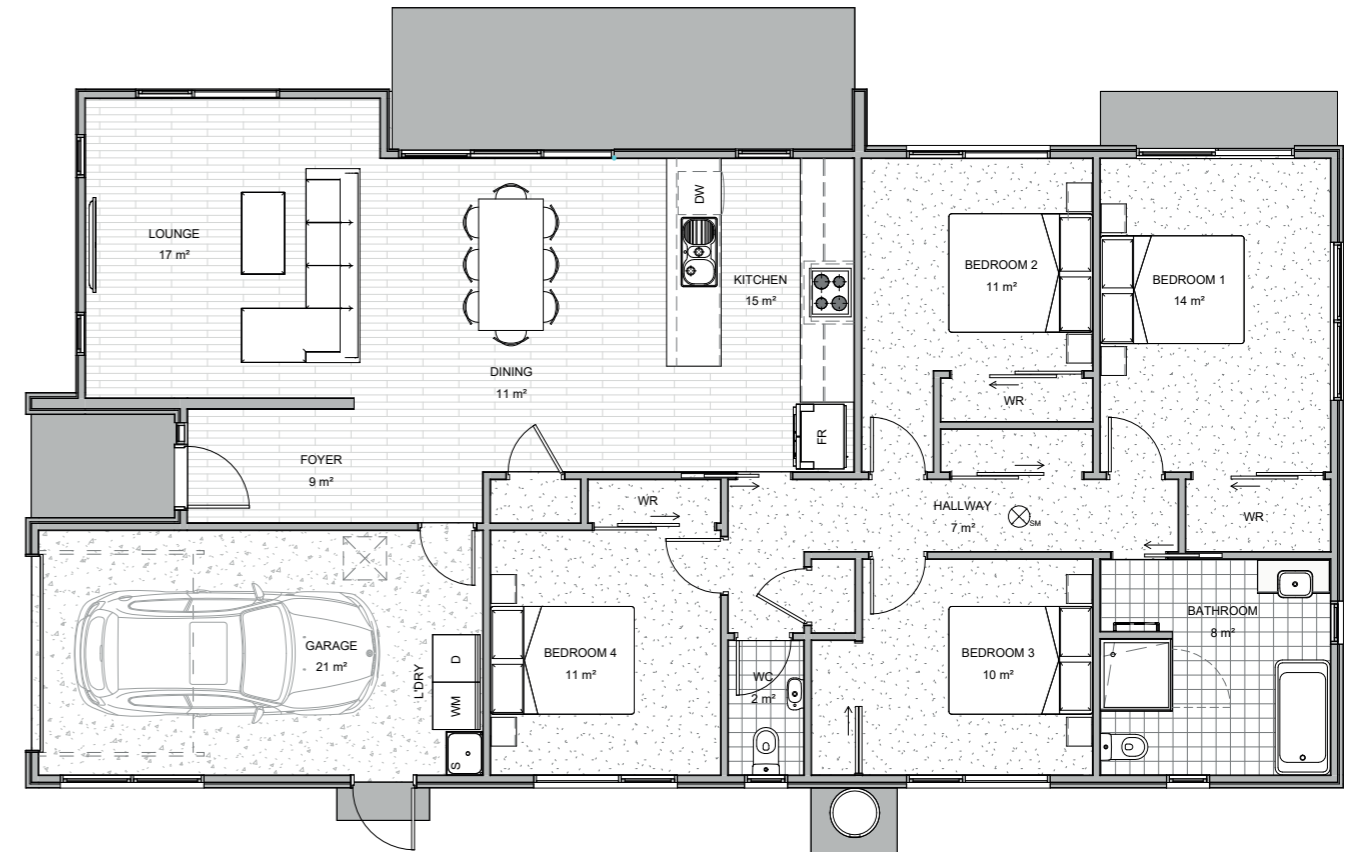
30 Kōrari Avenue



Tangata ako ana i te kāinga, te tūranga ki te marae, tau ana

# Architectural floorplan

LOT 42



Floor Plan

**Please note:**  
All features, dimensions, colours and stylisation are approximate & subject to minor changes during construction.



A person nurtured in the community contributes strongly to society