



Waingākau Housing
Development Ltd

NOHO MAI
LIVE HERE

Lot 3 (28 Tarbet Street)



PROPERTY FEATURES:

145 metre square, 3 bedroom, 2 bathroom, 1-car garage, grand corner location on a 594 m2 section.

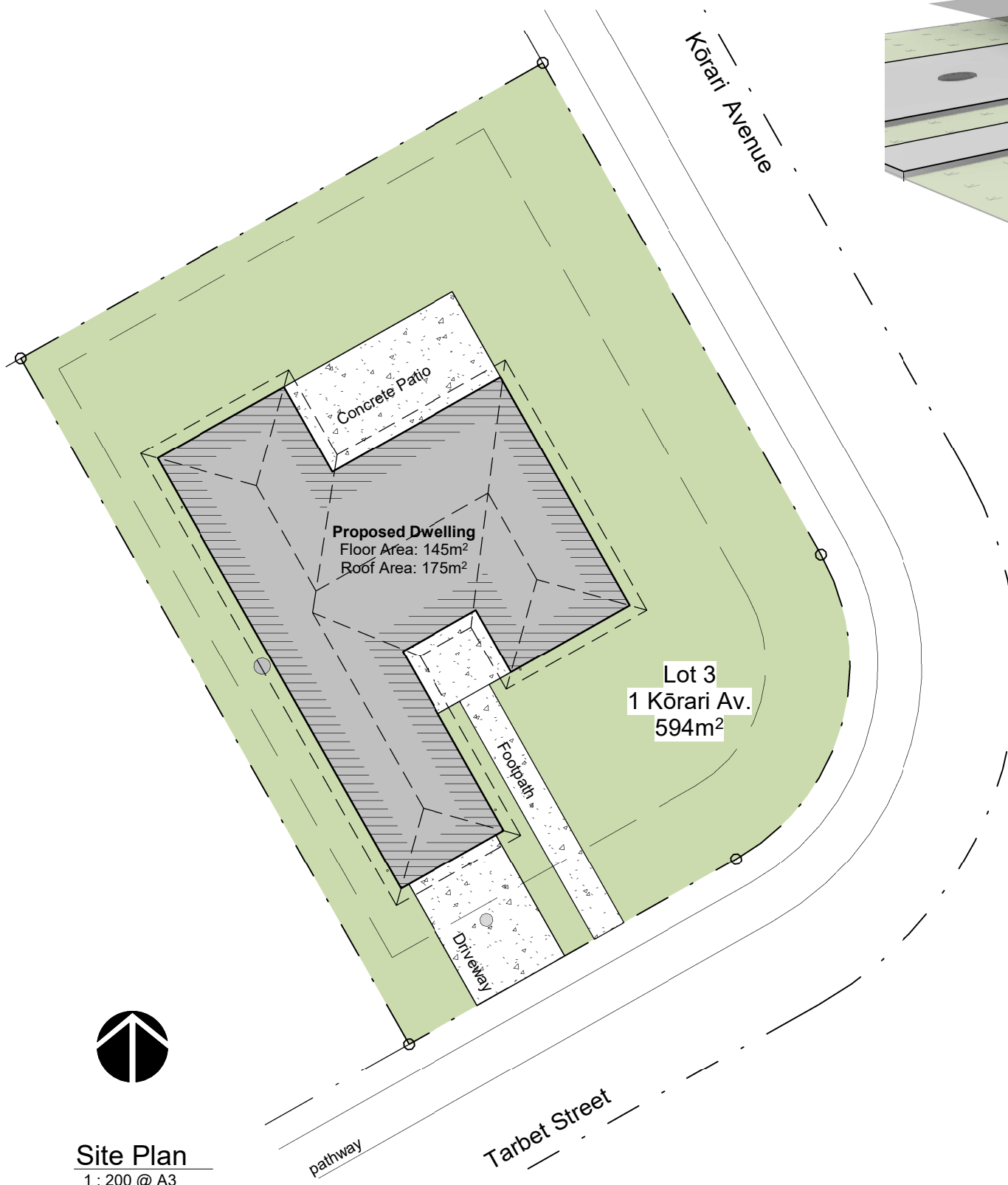
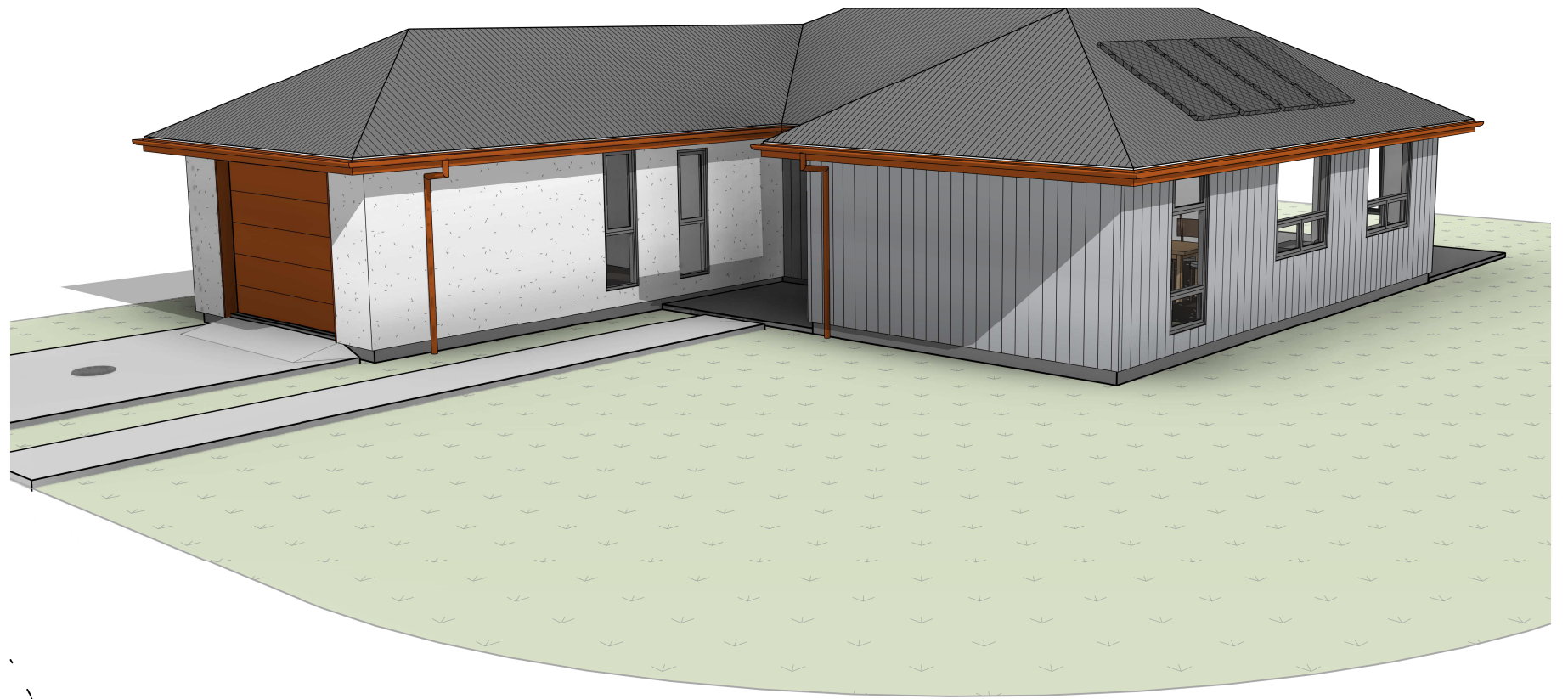
Looking for something new?

A newly built home at the entry of the newly built Waingākau Housing Development. Beautifully designed, the low maintenance coloursteel roof and linear weatherboard, means this home will look this good for years to come.

The brief entranceway opens into a beautifully designed room, with a welcoming kitchen including a 4 hob cooker and large island, an entertainer's dream. Open plan with the living and dining room with doors opening up to extend the living space out to the fully fenced, easy care section.

This family home boasts a generous master bedroom with ensuite and walk-in wardrobe as well as two double bedrooms each with own storage cupboard. A family bathroom with a full-sized bath and separate shower and toilet, means all that is missing is a whānau to call it home.

With a Solar power system already installed, what more could you want? The time is right to move in and start saving money.

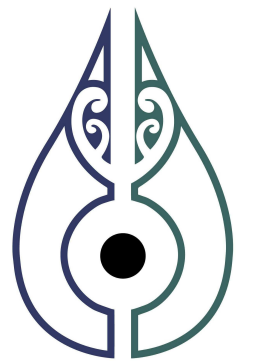


Site Plan
 1 : 200 @ A3



Locality Plan
 1 : 3000 @ A3

Waingākau



SIMPLY ARCHITECTURE

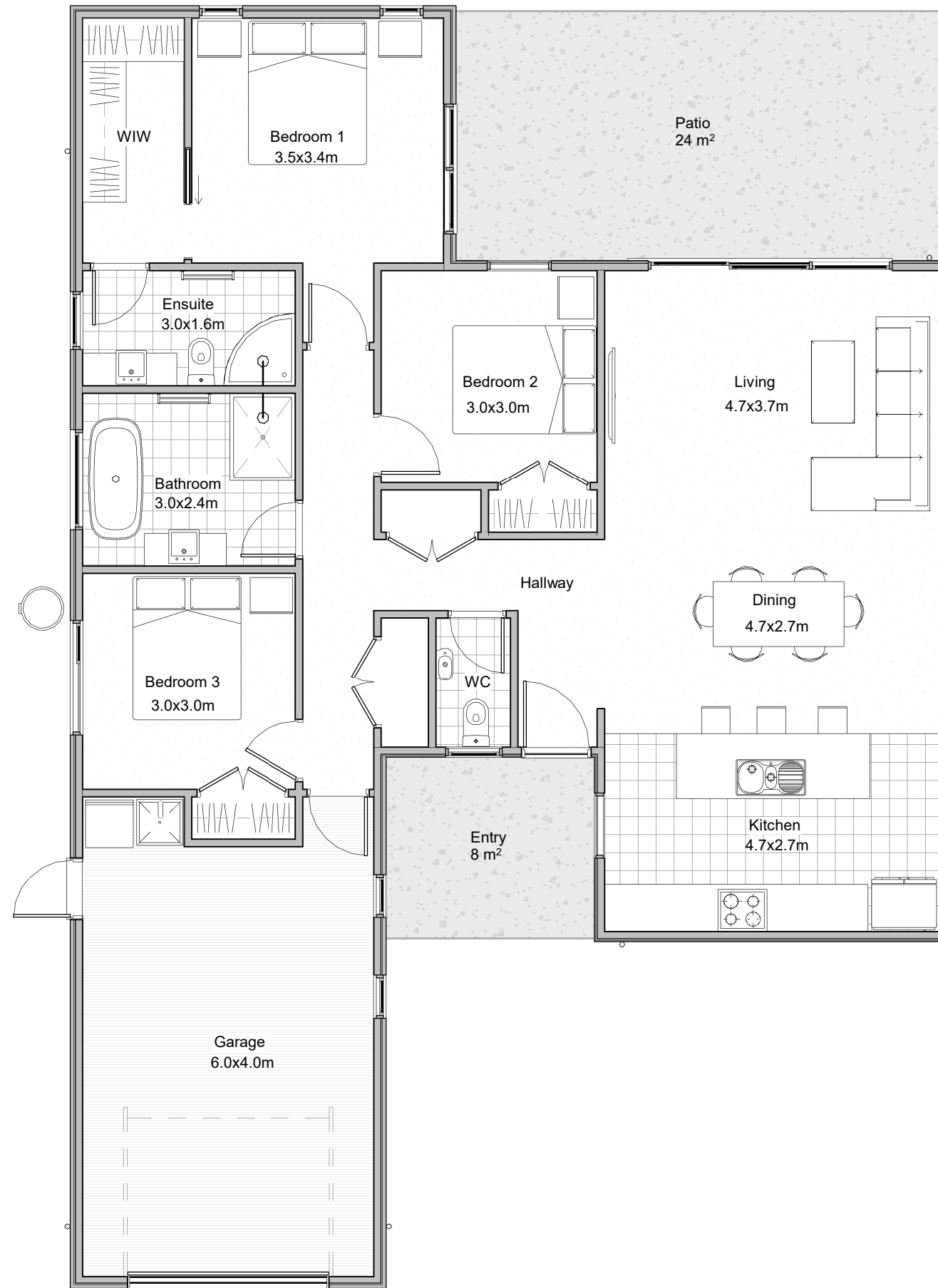
Cover Sheet

All dimensions, colours, finishes and locality are for display purposes only and are subject to change.

This drawing is copyright & remains the property of:

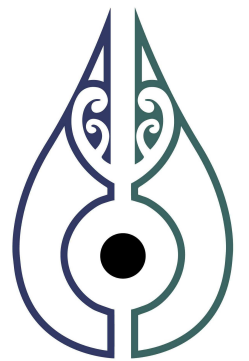
Floor Finishes:

-  Selected carpet over underlay
± 78.60m²
-  Selected Bathroom / Kitchen tiles
± 27.10m²
-  High-Traffic Garage carpet
± 26.00m²



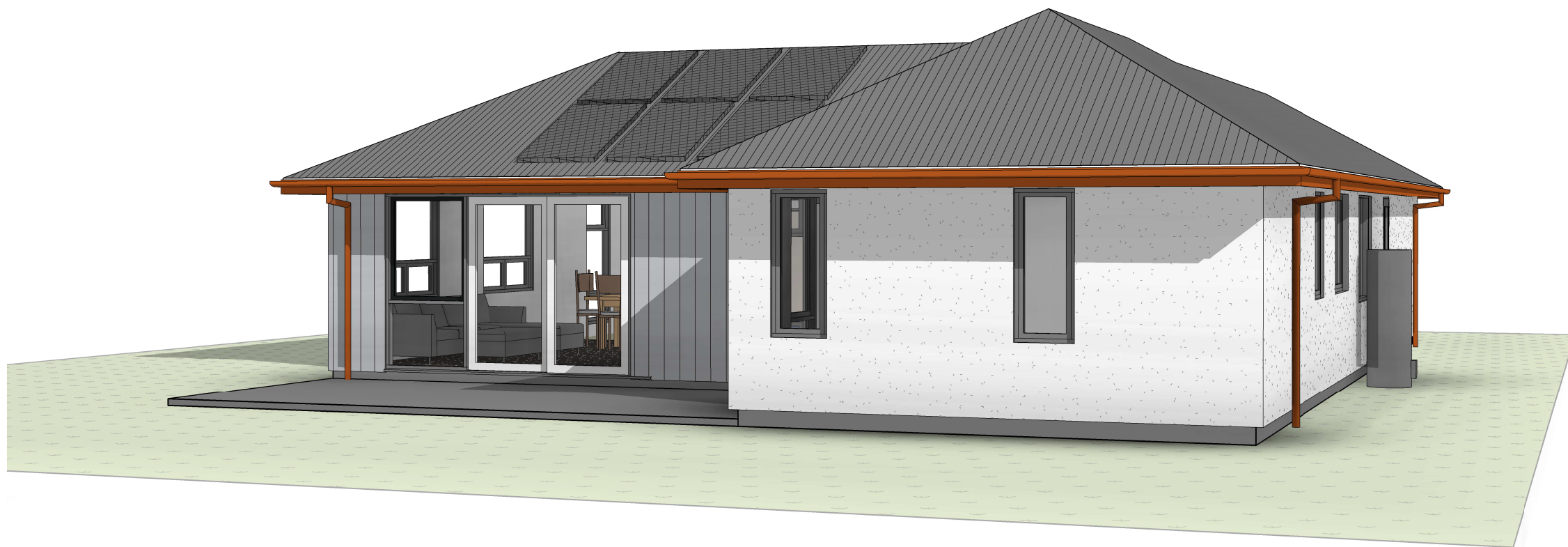
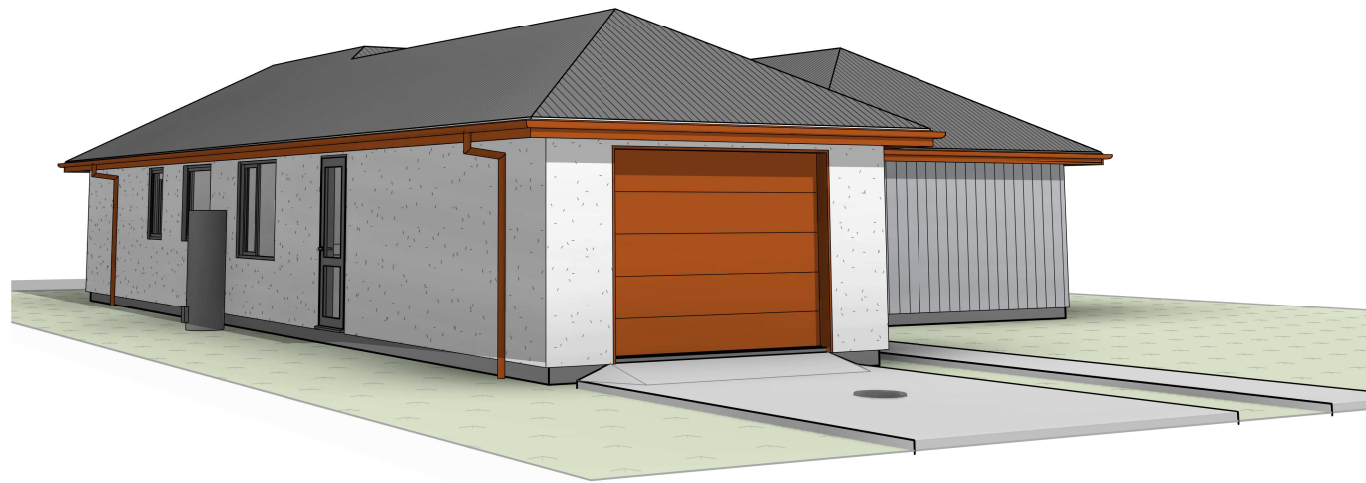
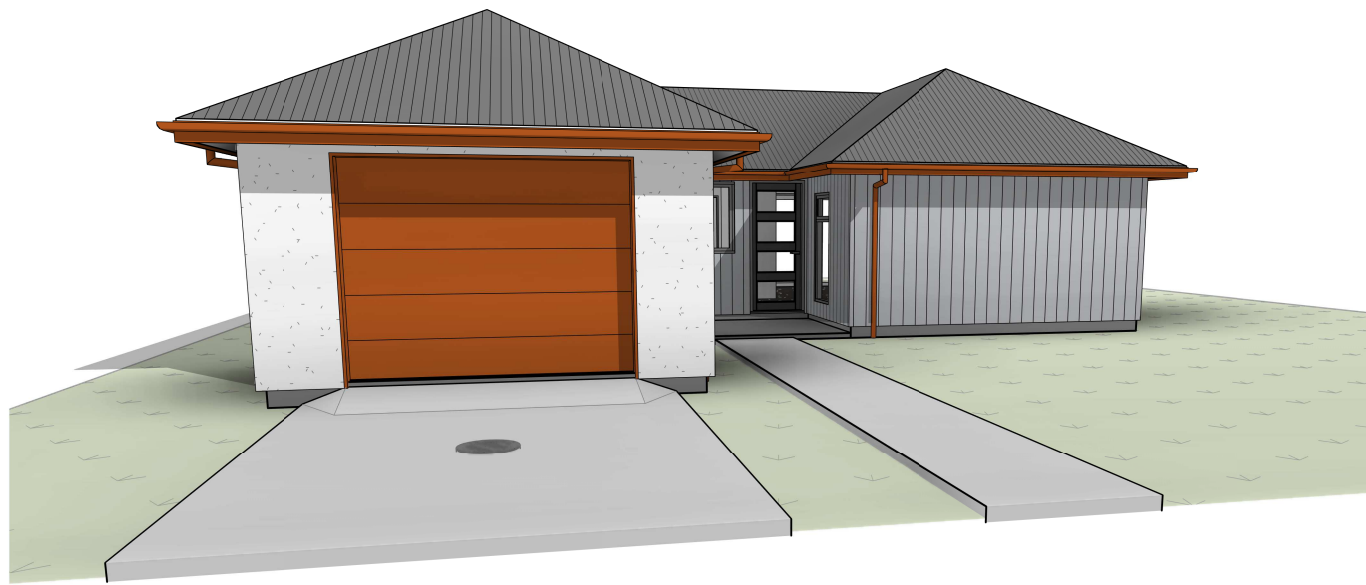
Floor Plan
1 : 75 @ A3

Waingākau

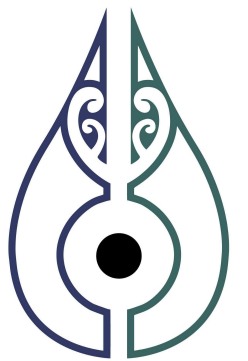


SIMPLY ARCHITECTURE

Floor Plan



Waingākau



SIMPLY ARCHITECTURE

3D Views

All dimensions, colours, finishes and locality are for display purposes only and are subject to change.

This drawing is copyright & remains the property of:

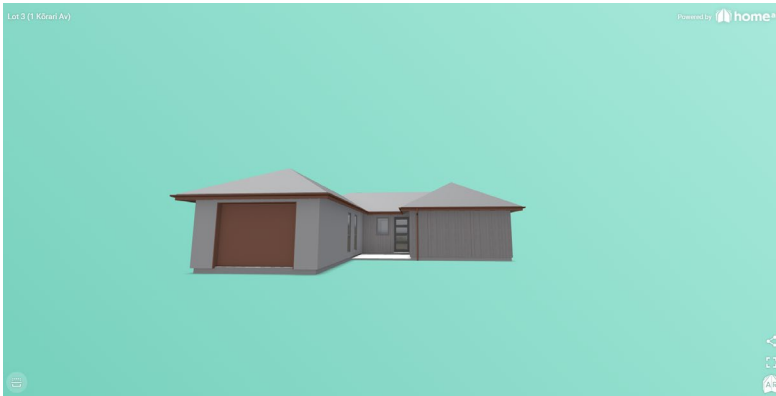


Waingākau Housing
Development Ltd

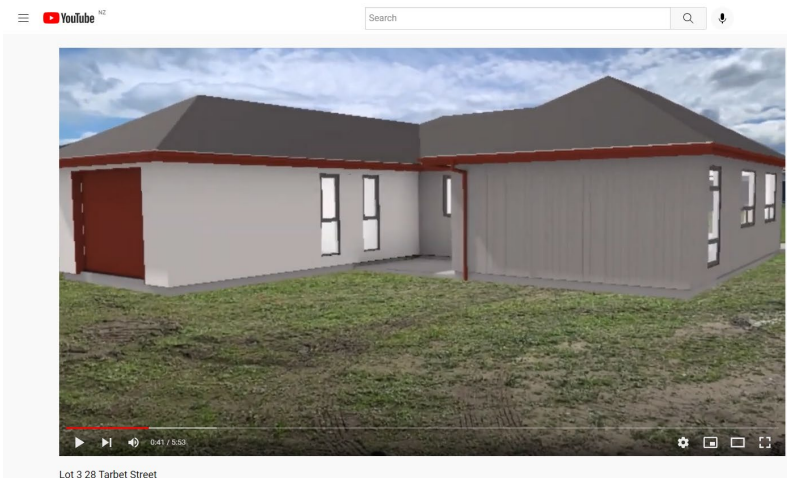
NOHO MAI
LIVE HERE



[HomeAR Augmented Reality Link](#)



[HomeAR Browser based 3D Link](#)



[Virtual Walk-through tour](#)

Kōrero mai

Contact us

Call: 06 871 5350

Email: info@waingakau.co.nz

www.waingakau.co.nz

Tangata ako ana i te kāinga, te tūranga ki te marae, tau ana
A person nurtured in the community contributes strongly to society