

**FOR SALE**

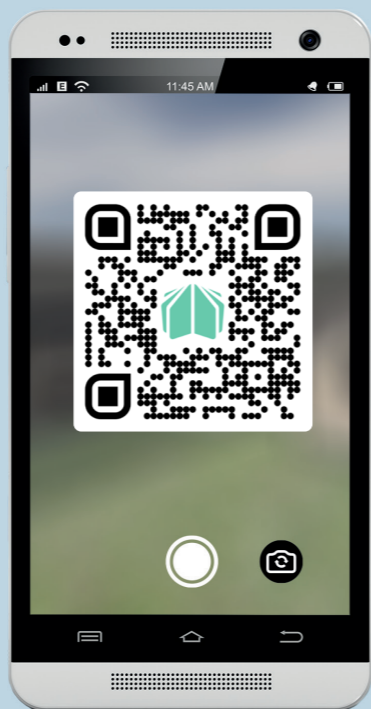
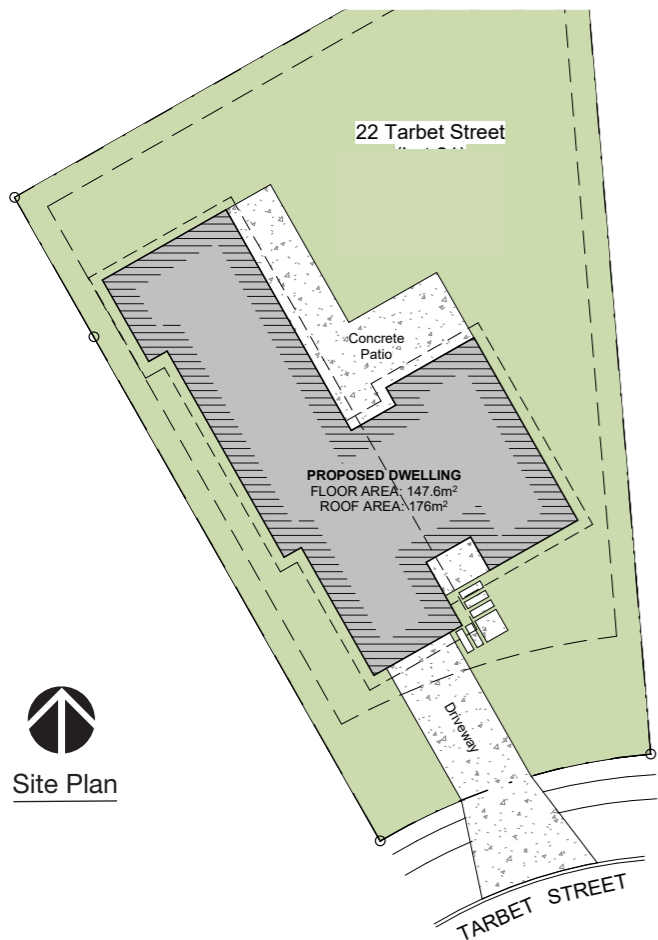
**22 Tarbet Street**

**LOT 21**

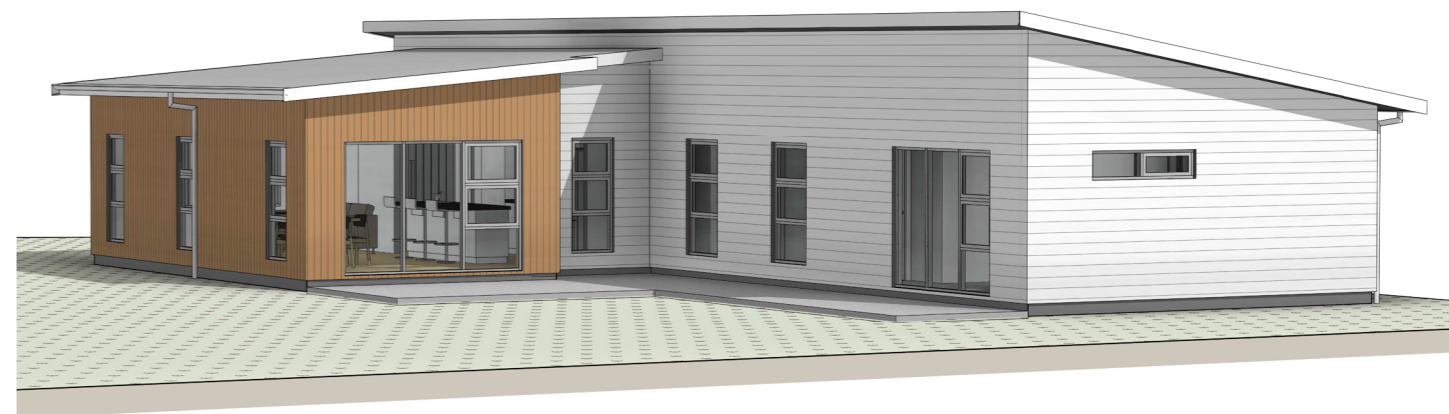
**FOR SALE**






**22 Tarbet Street**

**LOT 21**



HomeAR  
Augmented Reality Link



 Section 650 m<sup>2</sup>
 House 148 m<sup>2</sup>
 Bedroom 3
  Bathroom 2
  Garage 1



**Kōrero mai**  
Contact us  
06 871 5350  
info@waingakau.co.nz  
www.waingakau.co.nz

### THE MORE YOU SEE, THE MORE YOU WILL WANT TO SEE

Tucked away, this wee gem has plenty of surprises. Sleek roof lines and contrasting exterior materials, from the very first glimpse, this home is stunning.

This new contemporary home is perfectly orientated for all day sun, and to make the most of the generous back yard. The large open kitchen, dining and living area is spacious, yet warm and welcoming with the help of highspec argon filled double glazed windows and extra insulation. Although passively heated, a digitally controlled SmartVent fully ducted ventilation system and the Daiken Invertor heatpump help to keep the temperature perfect for the whole whānau all year round.

Internal access garage is carpeted and fully insulated including the panel door adds further versatility to this extra space. Walk down the hall to the three generous bedrooms and a large tiled bathroom with shower and standalone bath. The Master bedroom opens out onto the rear patio and is complete with a walk in wardrobe and ensuite.

The time is right to move into this beautiful family home now.








VISIT OUR WEBSITE & TAKE A VIRTUAL TOUR

**Kōrero mai**  
Contact us

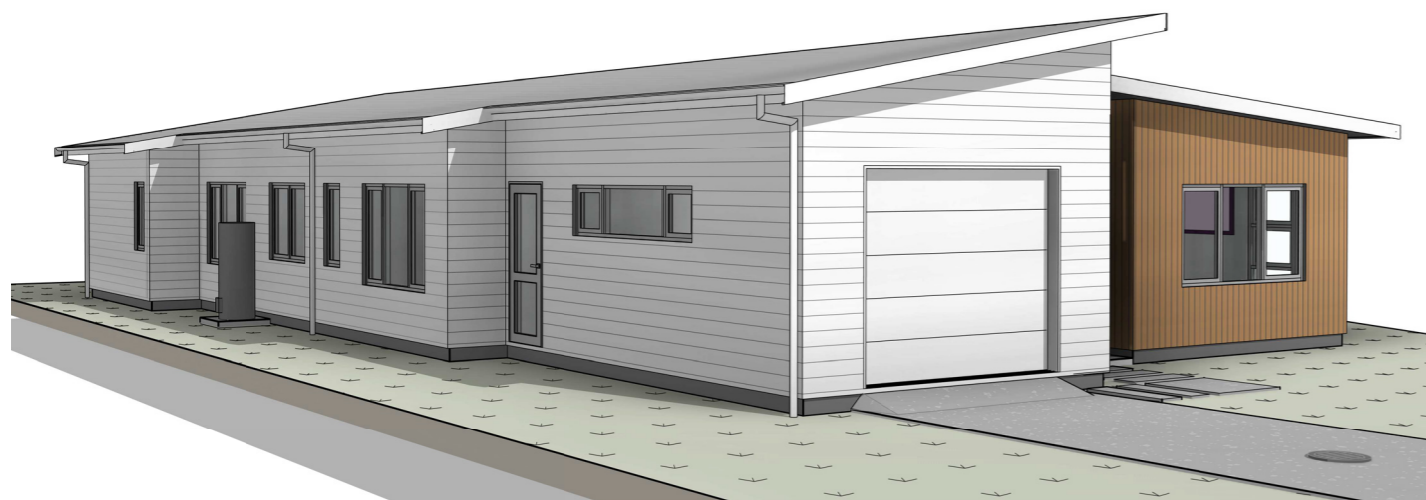
06 871 5350  
info@waingakau.co.nz  
www.waingakau.co.nz



 Section 650 m<sup>2</sup>
 House 148 m<sup>2</sup>
 Bedroom 3
  Bathroom 2
  Garage 1

# Artistic images

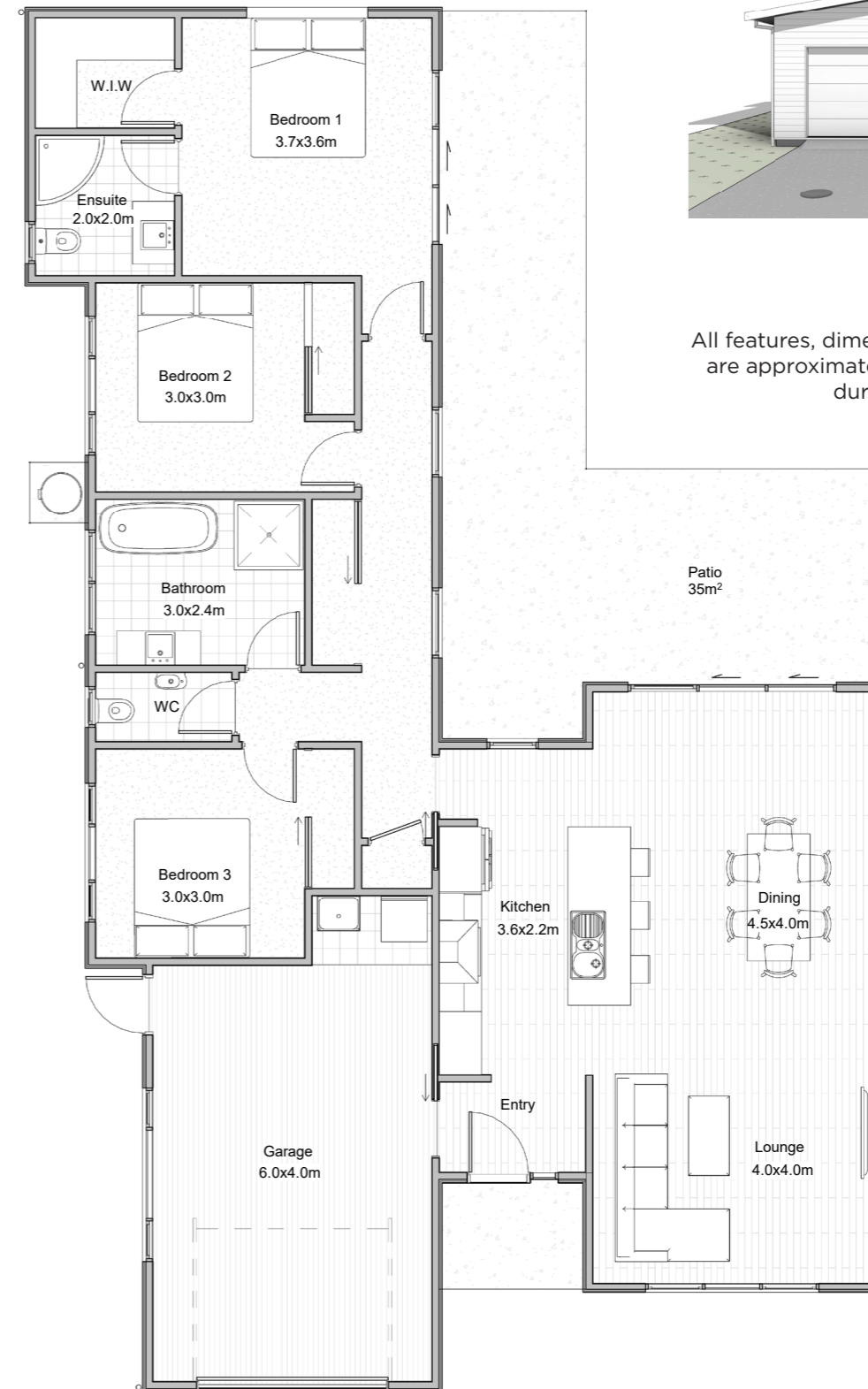
22 Taret Street



Tangata ako ana i te kāinga, te tūrangā ki te marae, tau ana

# Architectural floorplan

LOT  
21



**Please note:**  
All features, dimensions, colours and stylisation are approximate & subject to minor changes during construction.



Floor Plan

A person nurtured in the community contributes strongly to society