



Waingākau Housing
Development Ltd

NOHO MAI
LIVE HERE

Lot 21 (22 Tarbet Street)



PROPERTY FEATURES:

145 metre square, 3 bedroom, 2 bathroom, 1-car garage, 650 m2 section on the edge of our Waingākau Development.

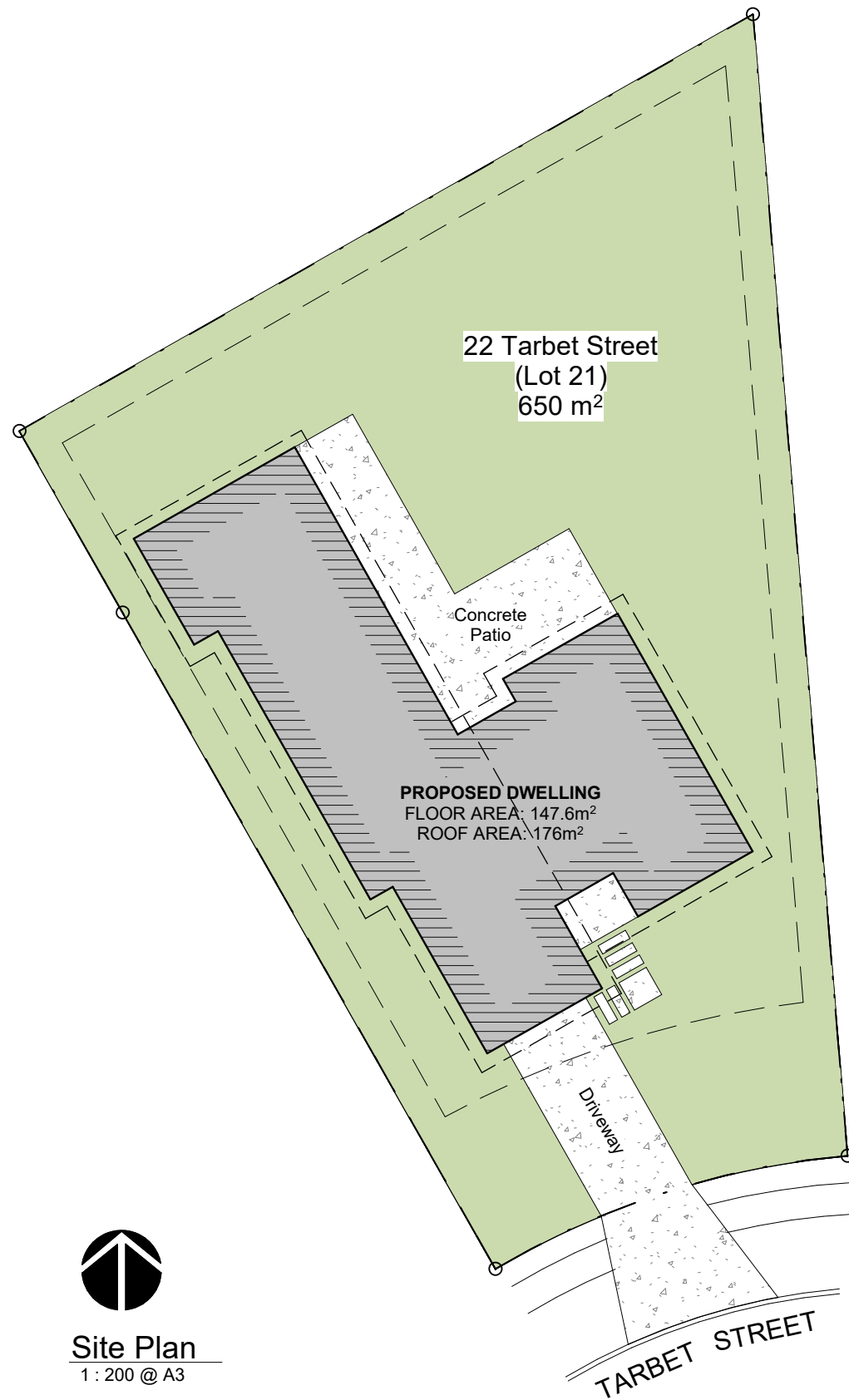
The more you see, the more you will want to see.

Tucked away, this wee gem has plenty of surprises. Sleek roof lines and contrasting exterior materials, from the very first glimpse, this home is stunning.


This new contemporary home is perfectly orientated to for all day sun, and to make the most of the generous back yard. The large open kitchen, dining and living area is spacious, yet warm and welcoming with the help of high-spec argon filled double glazed windows and extra insulation. Although passively heated, a digitally controlled SmartVent fully ducted ventilation system and the Daiken Invertor heatpump help to keep the temperature perfect for the whole whānau all year round.

Internal access garage is carpeted and fully insulated including the panel door adds further versatility to this extra space. Walk down the hall to the three generous bedrooms and a large tiled bathroom with shower and standalone bath. The Master bedroom opens out onto the rear patio and is complete with a walk in wardrobe and ensuite.

With a Solar panel system already installed, what more could you want? The time is right to move in and start saving money on heating bills.



Locality Plan
NTS @ A3



Site Plan
1 : 200 @ A3



WAINGĀKAU
Housing Development Limited




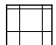


SIMPLY ARCHITECTURE

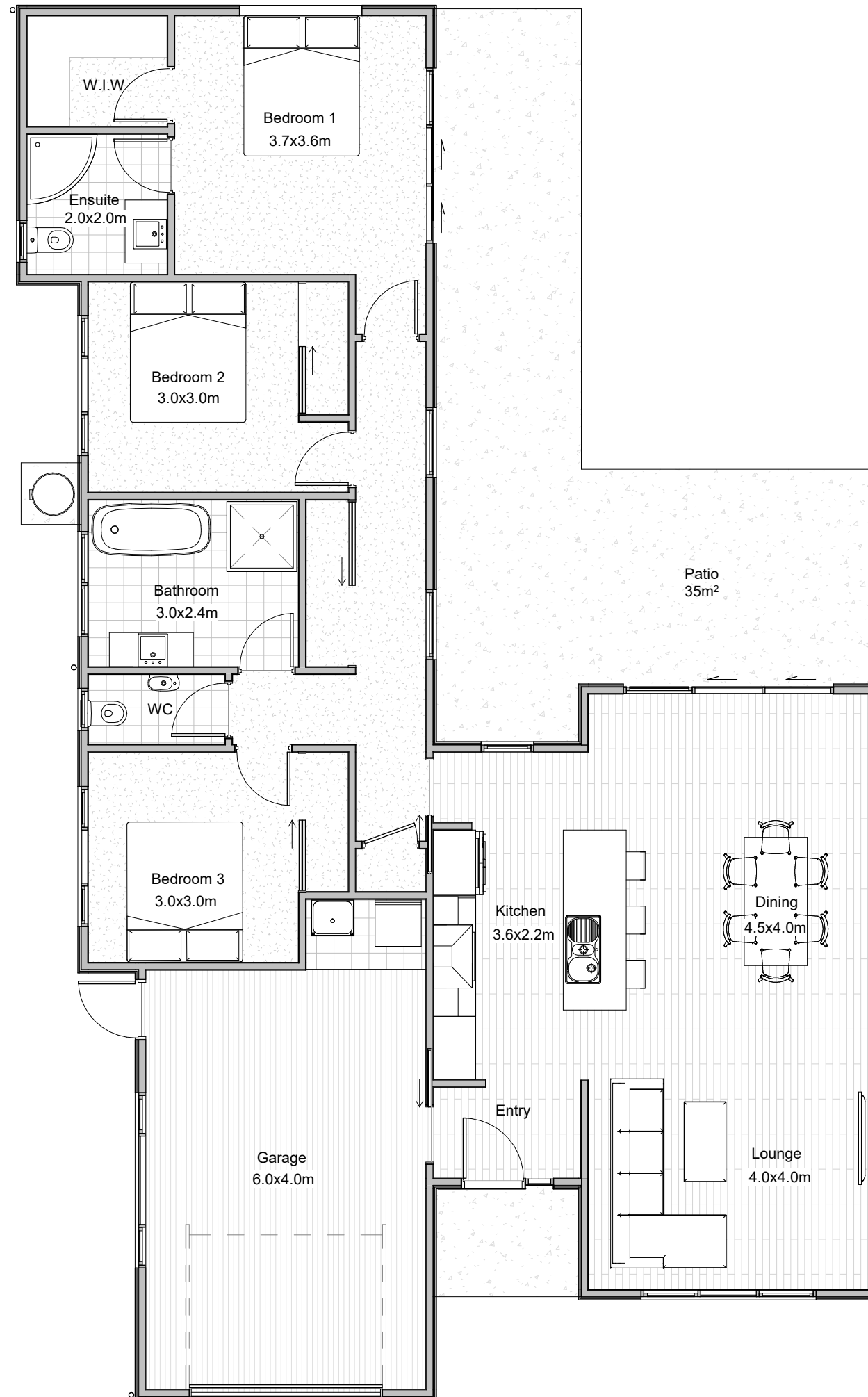
Cover Sheet

All features, dimensions, colours, finishes and locality are for display purposes only and are subject to change.

This drawing is copyright & remains the property of:

Floor Finishes:

-  Selected carpet over underlay
±96m²
-  Selected Bathroom tiles
±15m²
-  High-Traffic Garage carpet
±25m²
-  Selected Kitchen / Lounge tiles
±50m²



Floor Plan
1:75 @ A3



WAINGĀKAU
Housing Development Limited

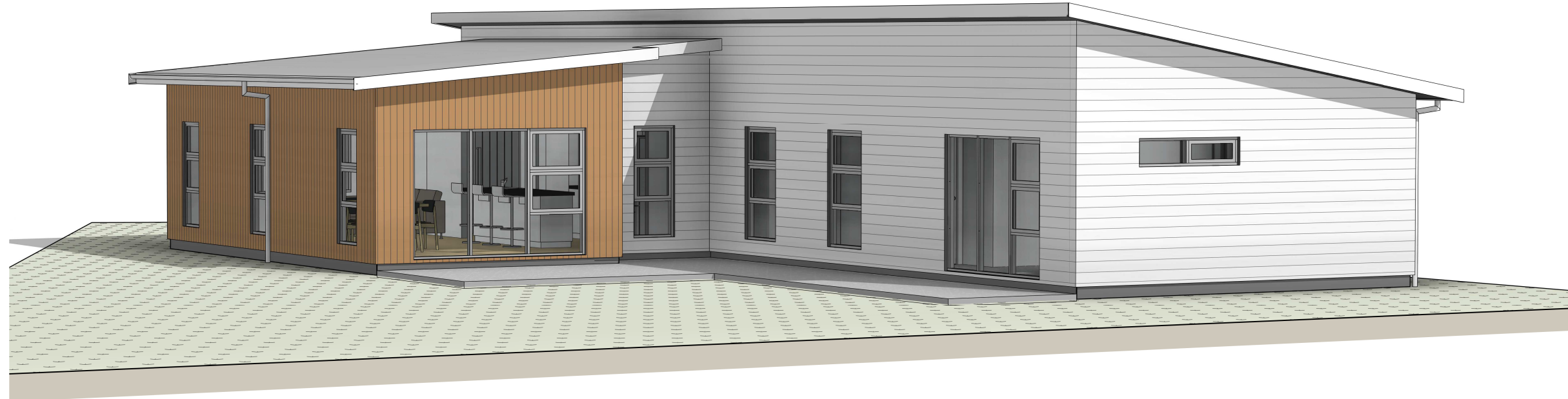
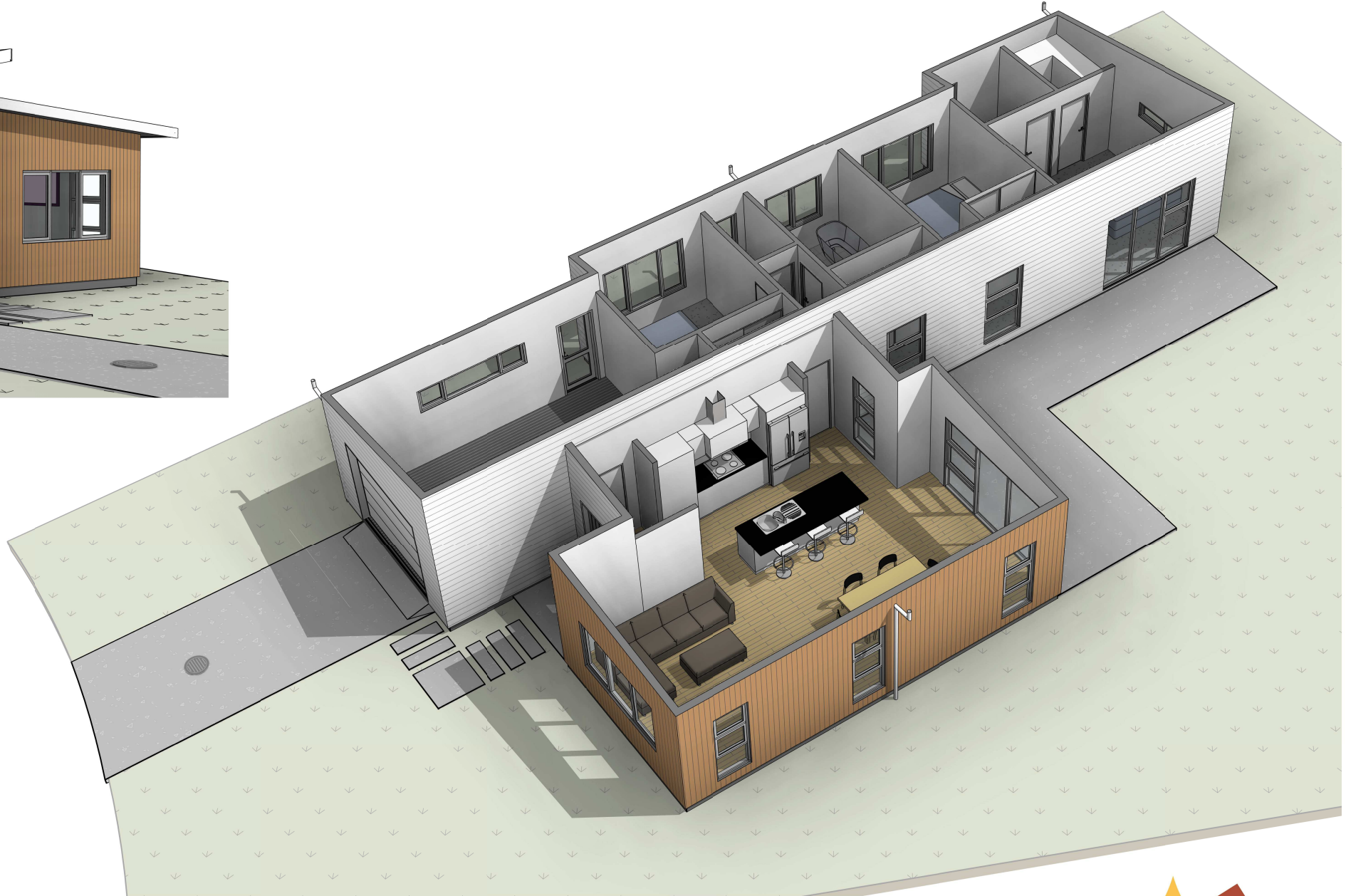
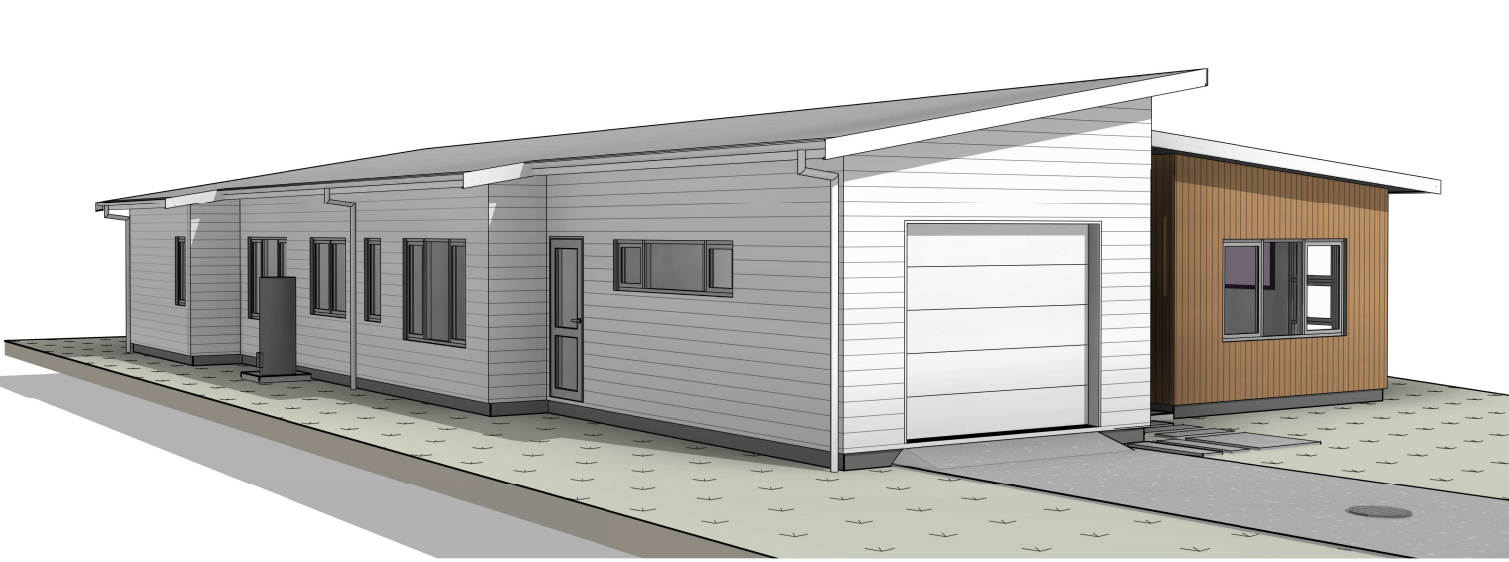


SIMPLY ARCHITECTURE

Floor Plan

All features, dimensions, colours, finishes and locality are for display purposes only and are subject to change.

This drawing is copyright & remains the property of:



WAINGĀKAU
Housing Development Limited



SIMPLY ARCHITECTURE

3D Views

All features, dimensions, colours, finishes and locality are for display purposes only and are subject to change.

This drawing is copyright & remains the property of:



Waingākau Housing
Development Ltd

NOHO MAI
LIVE HERE



[HomeAR Augmented Reality Link](#)



[HomeAR Browser based 3D Link](#)



[Virtual Walk-through tour](#)

Kōrero mai

Contact us

Call: 06 871 5350

Email: info@waingakau.co.nz

www.waingakau.co.nz

Tangata ako ana i te kāinga, te tūranga ki te marae, tau ana
A person nurtured in the community contributes strongly to society