



Waingākau Housing
Development Ltd

NOHO MAI
LIVE HERE

Lot 20 (88 Kirkwood Road)



PROPERTY FEATURES:

181 metre square, 4 bedroom, 2 bathroom, 2-car garage, 788 m2 section amongst the surrounds of the Waingākau Development.

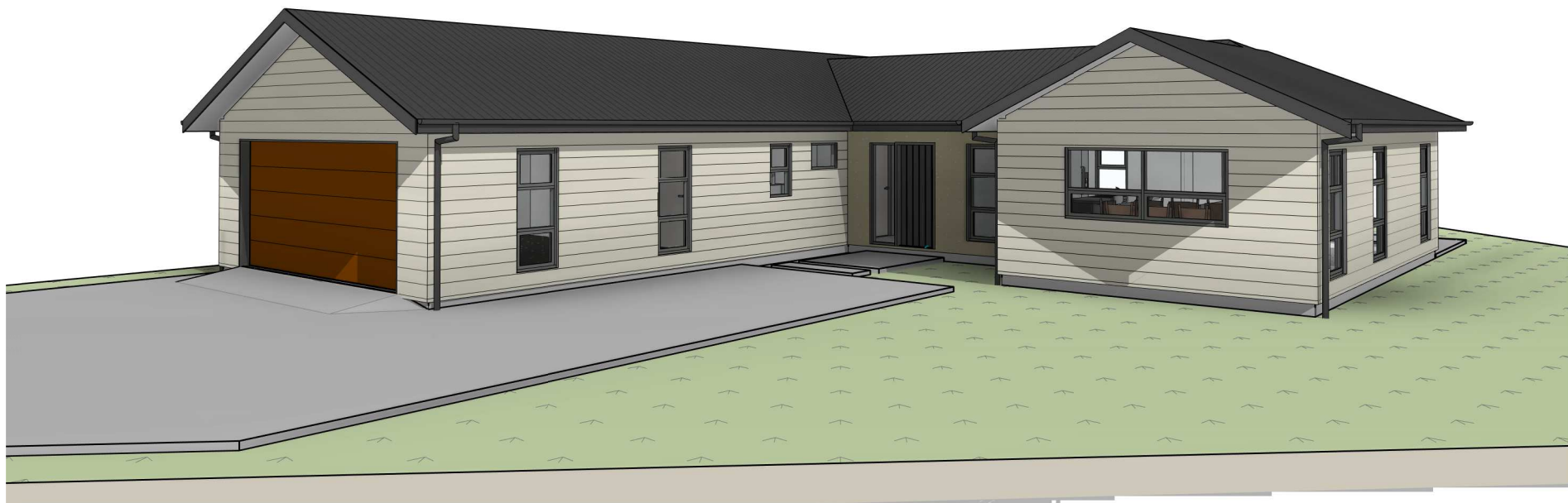
The perfect family home.

Set in the new Hastings District Council Development, this newly built four-bedroom, double internal garage house makes for the perfect family home.

The beautiful kitchen forms the social center of the open-plan kitchen/dining/living space, great for hosting whānau gatherings. It offers superb preparation and cooking facilities with large central island and 4-hob oven top. Positioned north facing allows maximum sunlight to ensure the living areas are light and inviting.

A luxury master bedroom suite is accompanied by a walk-in wardrobe and tiled ensuite. The main bathroom boasts a full-sized freestanding bath, with a separate toilet easily accessible from three double bedrooms. Each room has its own wardrobe giving plenty of storage space.

This home is equipped with double glazed, argon gas filled windows, extraordinary insulation, and a fully ducted ventilation system to support a warm, dry, healthy home and whānau.

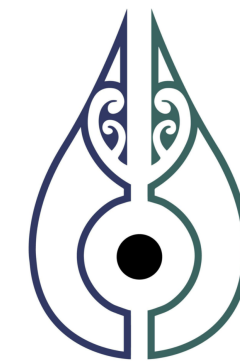


Locality Plan
NTS @ A3



Site Plan
1:200 @ A3

Waingākau







SIMPLY ARCHITECTURE

Cover Sheet

This drawing is copyright & remains the property of:

All dimensions, colours, finishes and locality are for display purposes only and are subject to change.

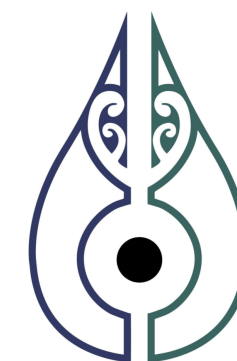
Floor Finishes:

-  Selected Bathroom tiles
±18m²
-  Selected carpet over underlay
±66m²
-  High-Traffic Garage carpet
±36m²
-  Selected Kitchen / Lounge tiles
±56m²



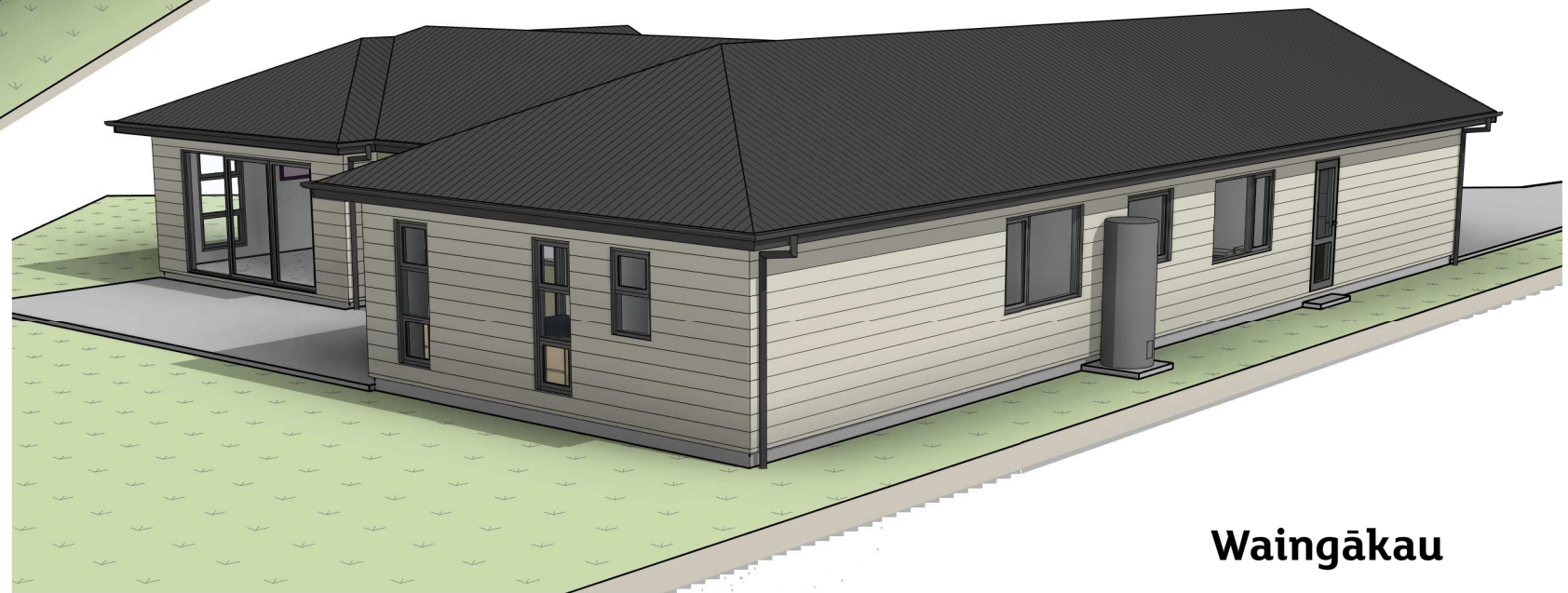
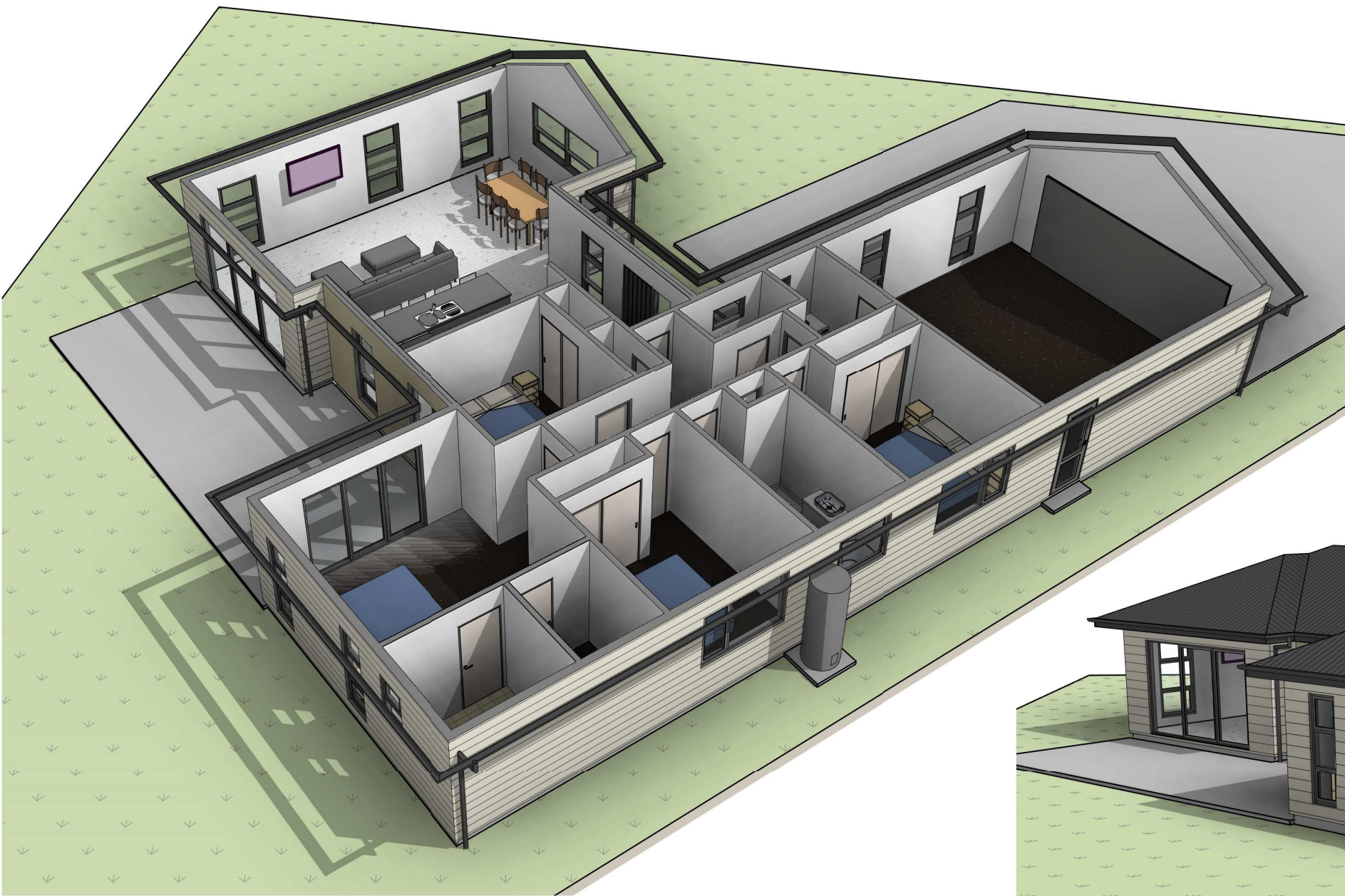
Floor Plan
1 : 75 @ A3

Waingākau

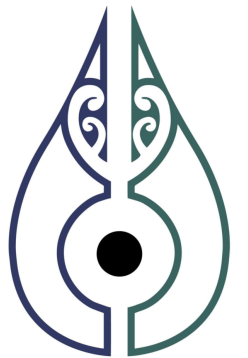


SIMPLY ARCHITECTURE

Floor Plan



Waingākau



SIMPLY ARCHITECTURE

3D Views

All dimensions, colours, finishes and locality are for display purposes only and are subject to change.

This drawing is copyright & remains the property of:

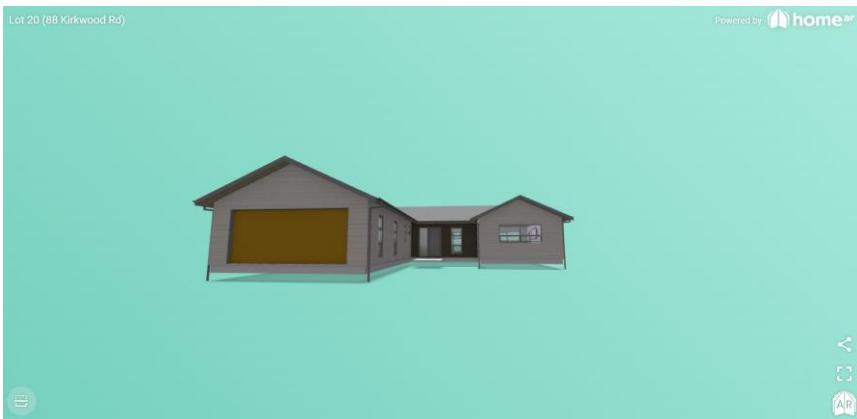


Waingākau Housing
Development Ltd

NOHO MAI
LIVE HERE



[HomeAR Augmented Reality
Link](#)



[HomeAR Browser based 3D Link](#)



[Virtual Walk-through tour](#)

Lot 20 (88 Kirkwood)

Kōrero mai

Contact us

Call: 06 871 5350

Email: info@waingakau.co.nz

www.waingakau.co.nz

Tangata ako ana i te kāinga, te tūrangā ki te marae, tau ana
A person nurtured in the community contributes strongly to society