

FOR SALE

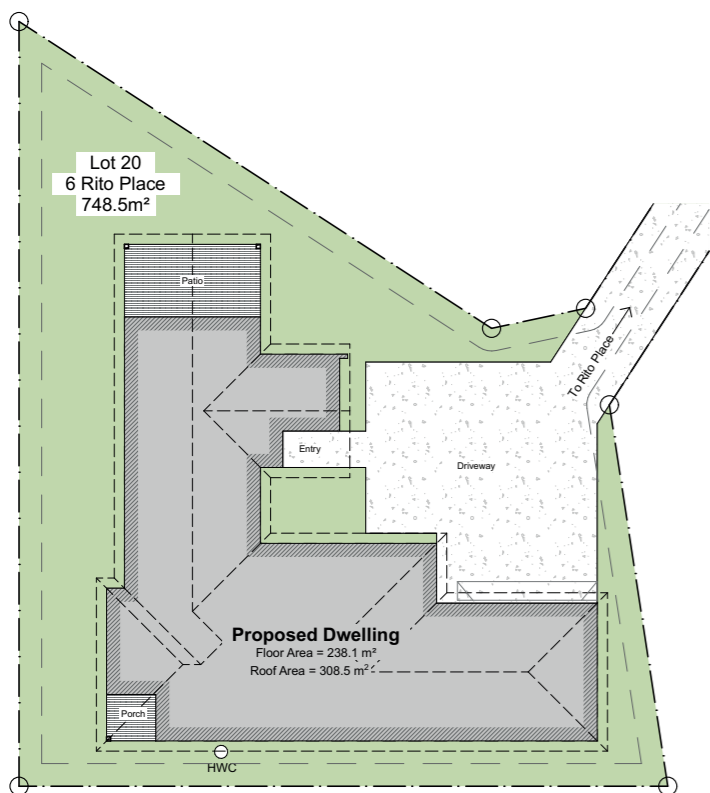
6 Rito Place

**LOT
20**

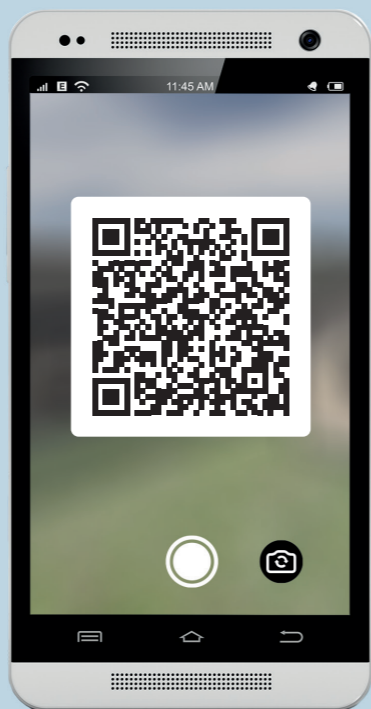
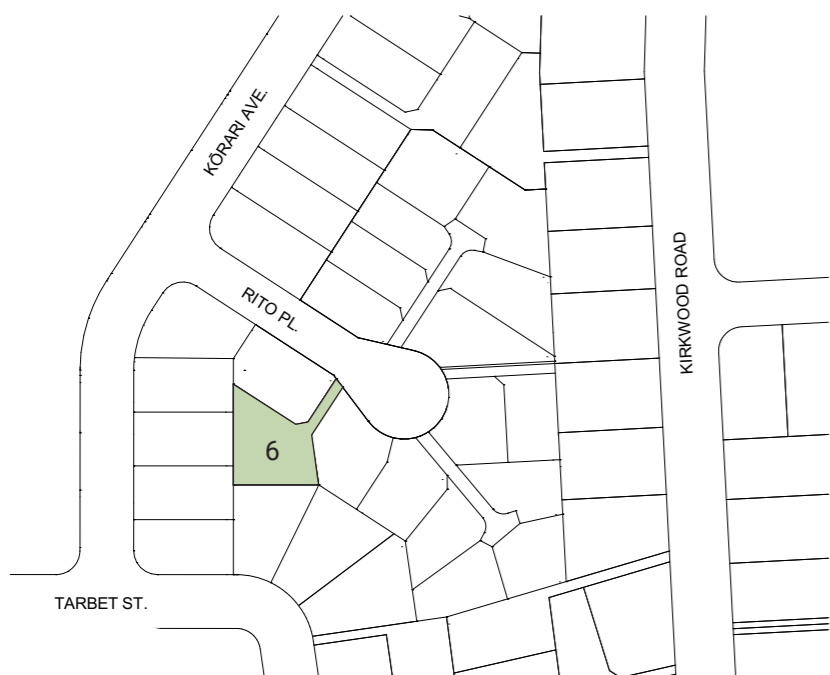
FOR SALE

6 Rito Place

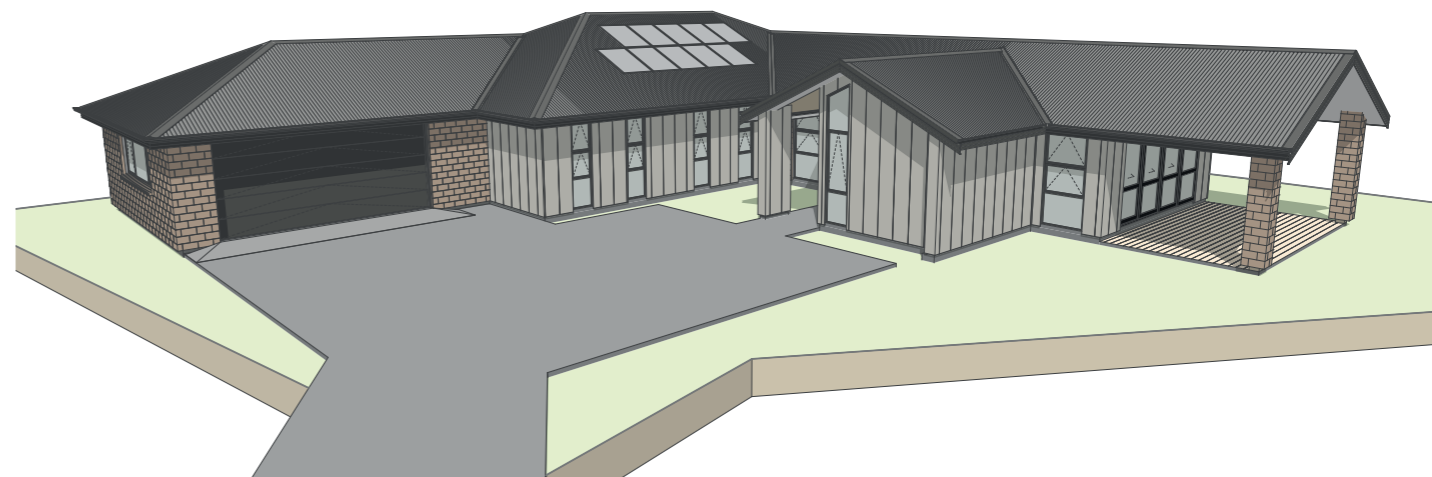
**LOT
20**



Site Plan



HomeAR
Augmented Reality Link



Section 749 m²



House 238 m²



Bedroom 5



Bathroom 3



Garage 2

LUXURY AND PRIVACY

Located in a quiet cul-de-sac, this rear section says "Wow" with astonishing brick and linear exterior and gorgeous gable end rooflines.

This deluxe five-bedroom home offers comfort and luxury for a large whānau. The focal point is the open plan kitchen featuring a breakfast bar and scullery that boast lavishness. Radiating with natural light is the large living and dining room positioned perfectly in the views of the portico and outdoor area which is ideal for all year around entertainment. Tucked away to the side is the lounge great space to keep the kids occupied whilst hosting guests.

The extensive master bedroom as your own piece of paradise, with an open plan walk-through wardrobe, ensuite and a private secluded porch. Four more double bedrooms ensure there is lots of space for the entire whānau. Also on offer is the double garage with a vast amount of storage, fully insulated and carpeted this also acts as an additional living space.

The quality is first class to our Haukāinga Hauora (Healthy Home) standard. One feature is the 10 PV solar roof panels, with external heat pump hot water cylinder, inverter and smart meter. Although the system is battery enabled, they are not included.



VISIT OUR WEBSITE & TAKE A VIRTUAL TOUR

Kōrero mai

Contact us

06 871 5350

info@waingakau.co.nz

www.waingakau.co.nz



Waingākau

Kōrero mai

Contact us

06 871 5350

info@waingakau.co.nz

www.waingakau.co.nz



Section 749 m²



House 238 m²



Bedroom 5



Bathroom 2



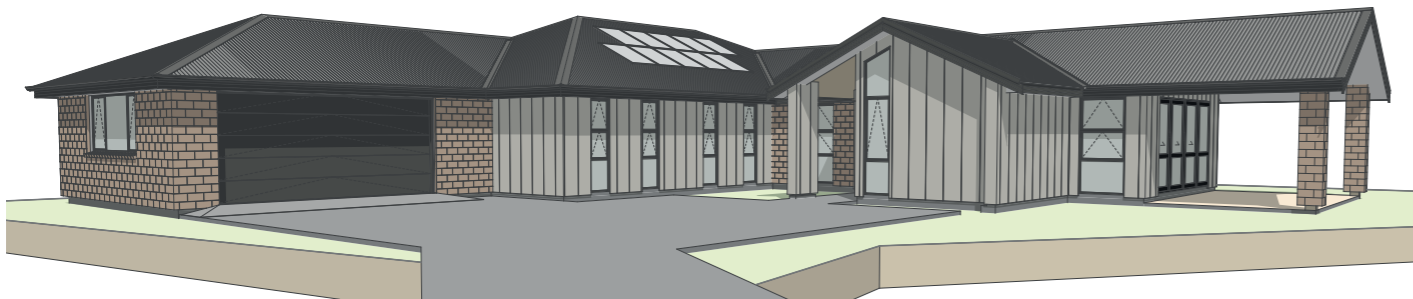
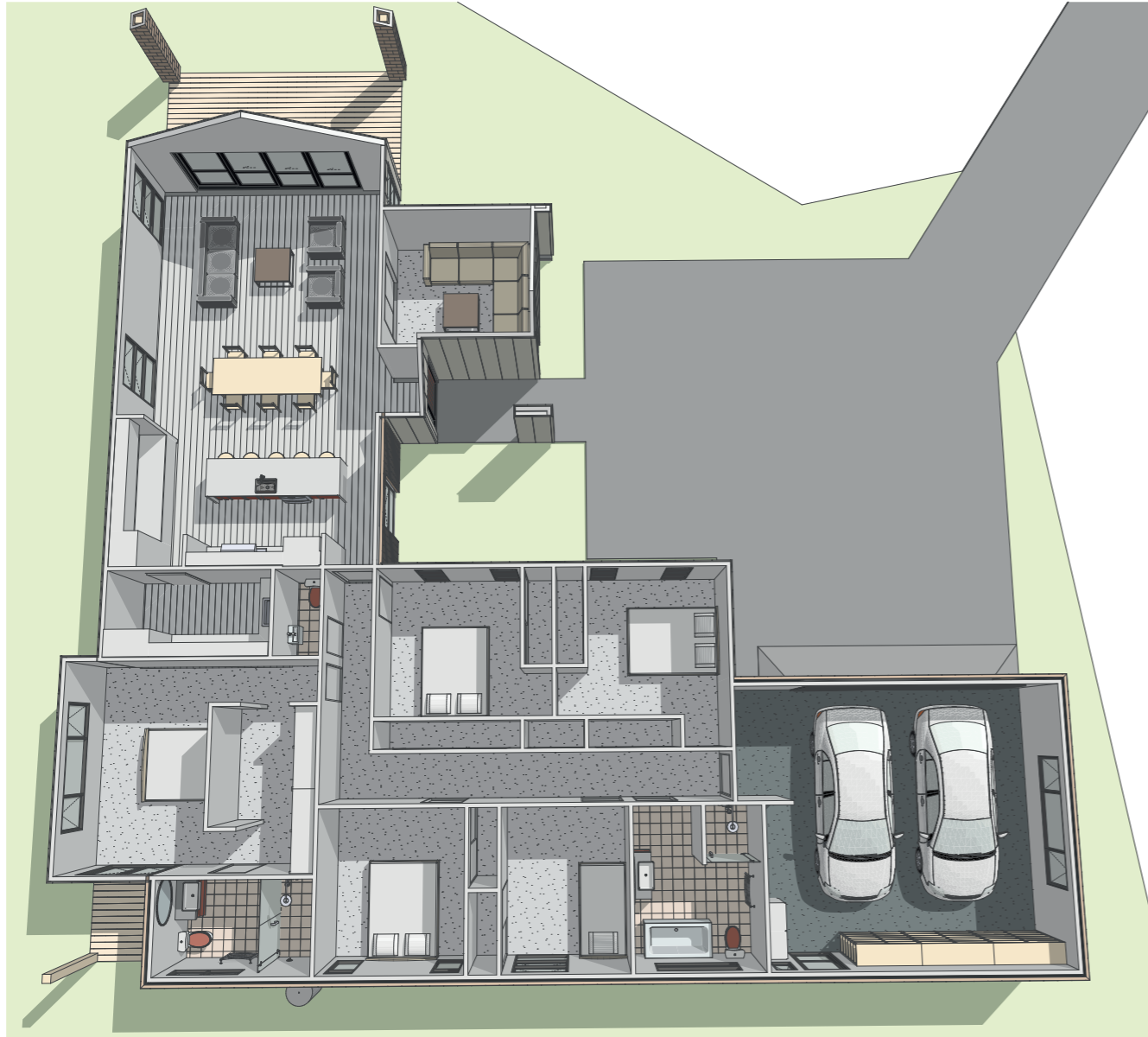
Garage 2



Waingākau

Artistic images

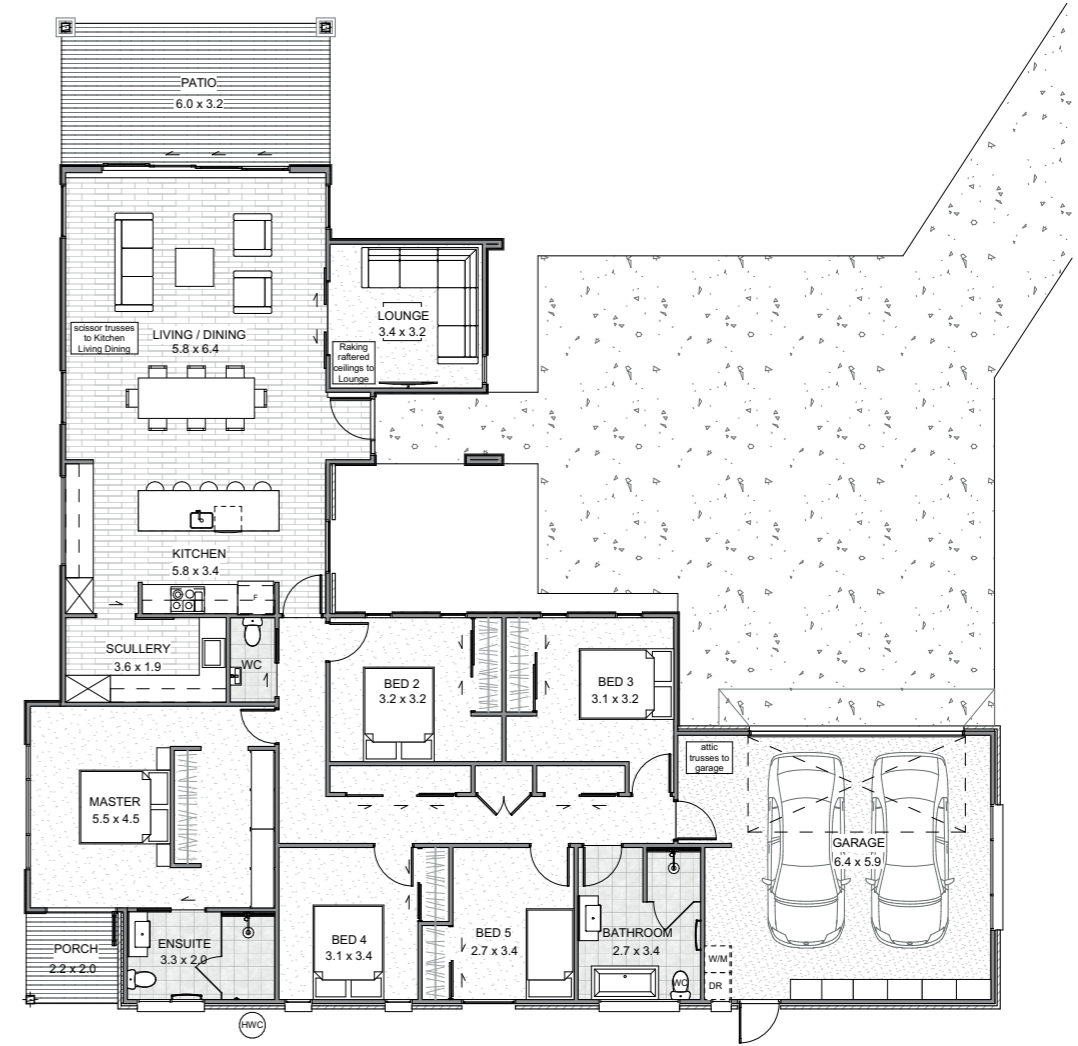
6 Rito Place



Tangata ako ana i te kāinga, te tūrangā ki te marae, tau ana

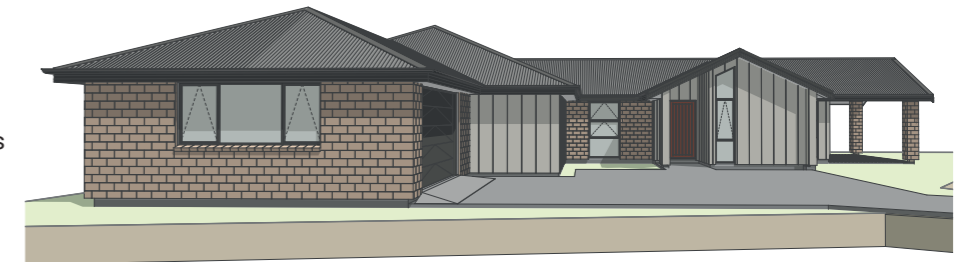
Architectural floorplan

LOT
20



Floor Plan

Please note:
All features, dimensions, colours and stylisation are approximate & subject to minor changes during construction.



A person nurtured in the community contributes strongly to society