



Waingākau Housing
Development Ltd

NOHO MAI
LIVE HERE

Lot 19 (12 Whāriki Crescent)



PROPERTY FEATURES:

145 metre square, 3 bedroom, 2 bathroom, 2-car garage, a tucked away location on a 642 m2 section.

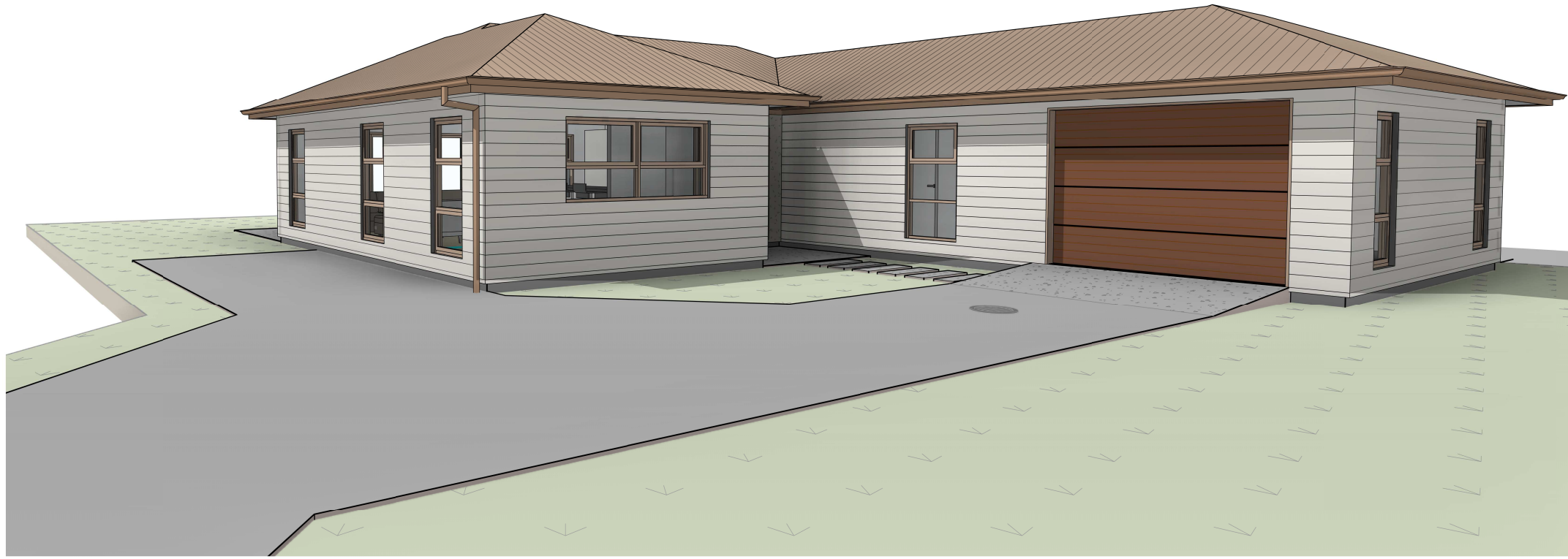
A new Opportunity

Amongst the Waingākau Housing Development is an opportunity for a spectacular new home the whole whānau will enjoy.

Upon entry you are greeted by a spacious living and dining area that opens directly out to a beautiful patio and a secure backyard, providing the perfect space for children to play. Orientated north facing, positioned to ensure living areas are flooded with sunlight and warmth.

Created with superb insulation, the floor is designed as an energy storage. The slab will retain heat and when the temperature drops, the floor will return temperature to the room to keep your whānau extra toasty.

A short hallway leads you to two double bedrooms with plenty of great storage. The stunning master bedroom is partnered with a grand en suite and walk in wardrobe. The extensive two-car garage is also fully insulated including the large panel garage door, providing yet another warm and dry living space for whānau.



Locality Plan
1 : 3000 @ A3

Site Plan
1 : 200 @ A3

All features, dimensions, colours, finishes and locality are for display purposes only and are subject to change.



WAINGĀKAU
Housing Development Limited



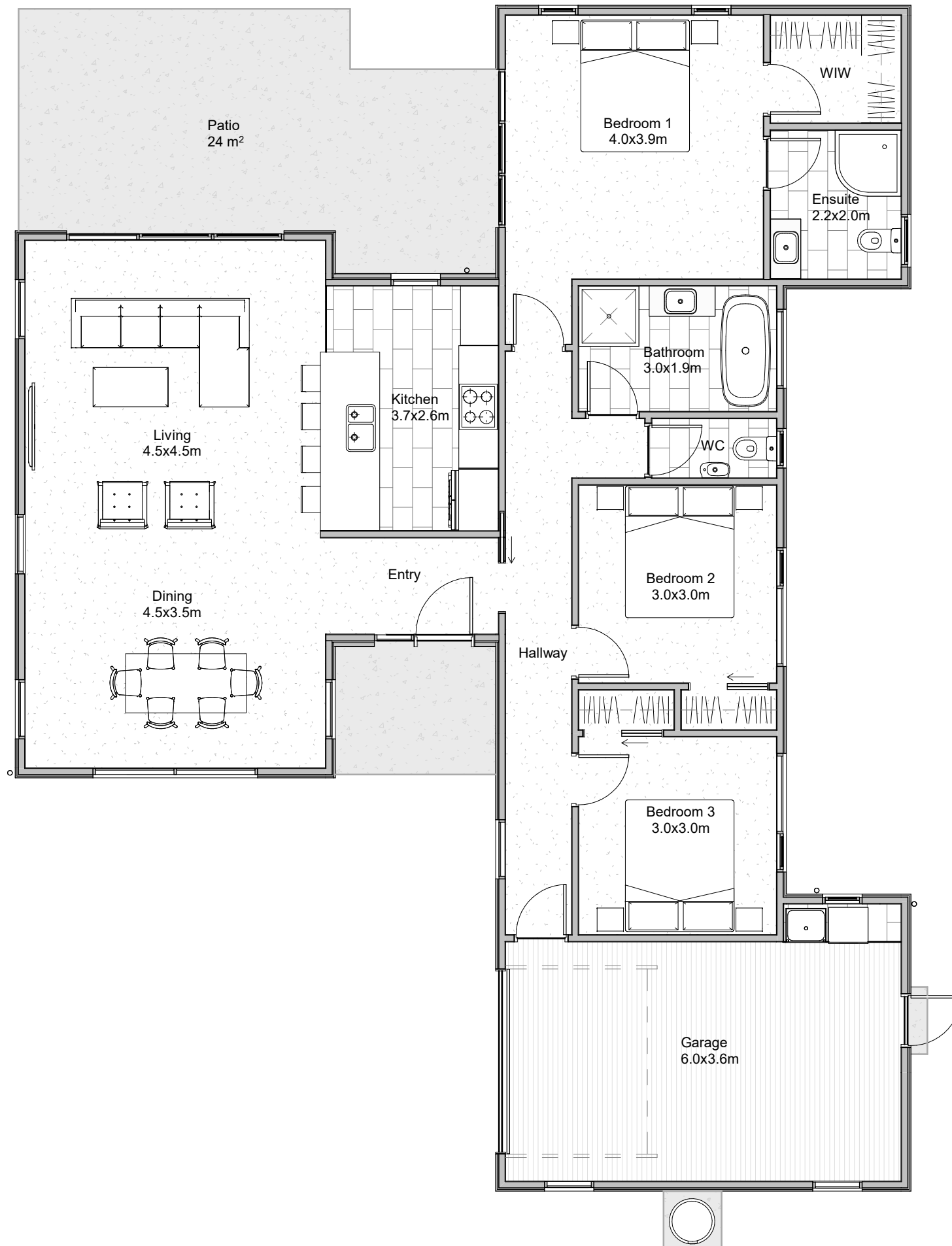
SIMPLY ARCHITECTURE

Cover Sheet

This drawing is copyright & remains the property of:

Floor Finishes:

-  Selected carpet over underlay
± 93m²
-  Selected Bathroom / Kitchen tiles
± 24m²
-  High-Traffic Garage carpet
± 23m²



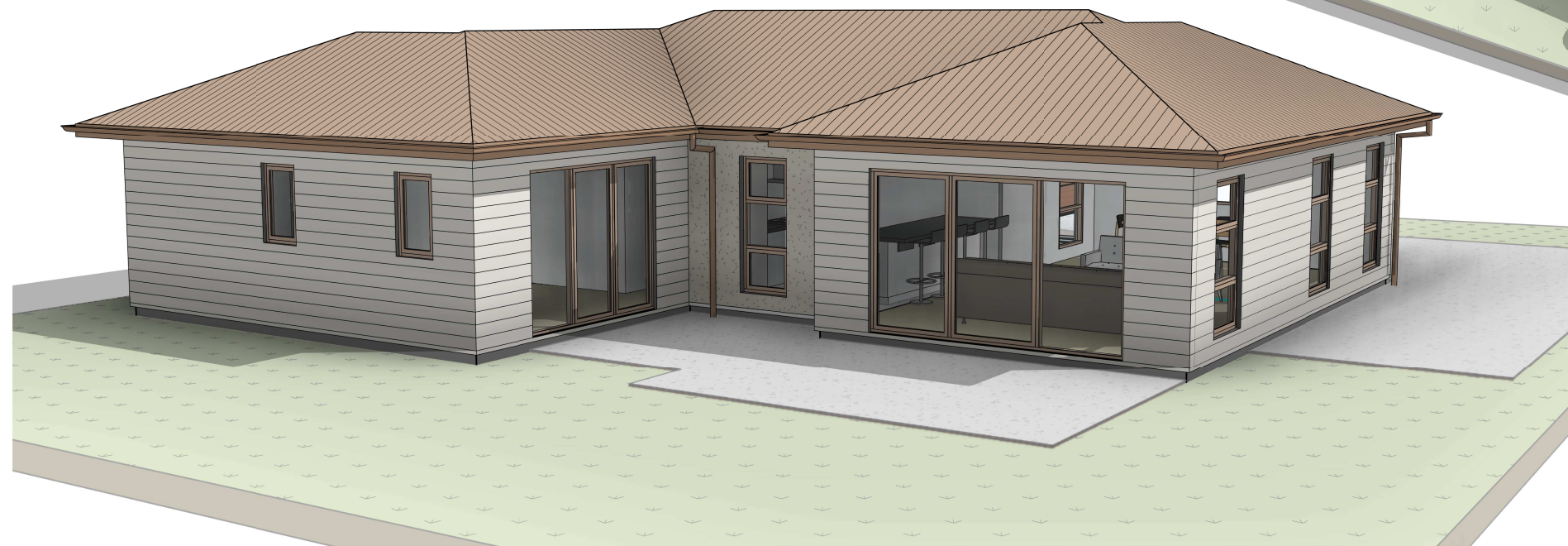
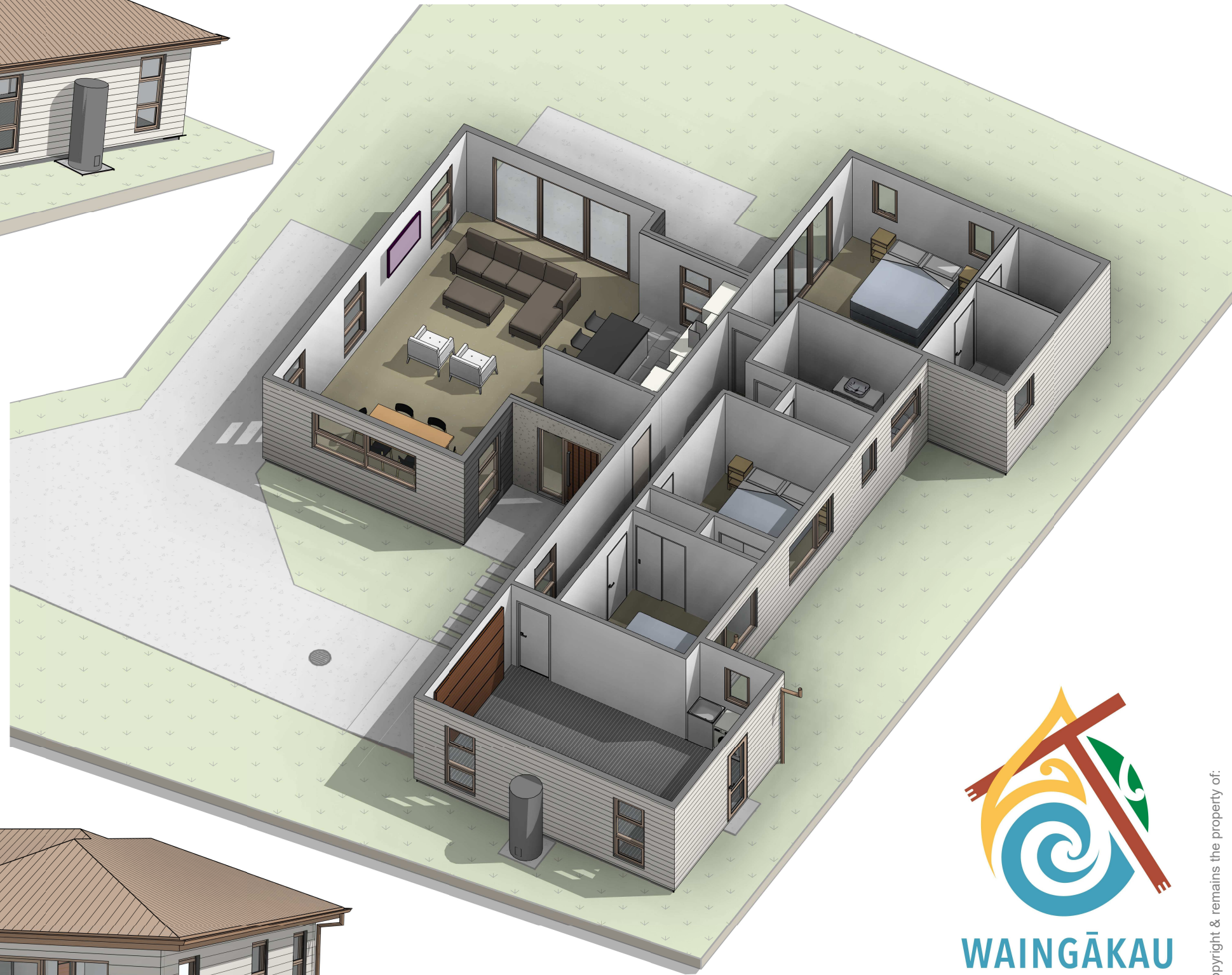
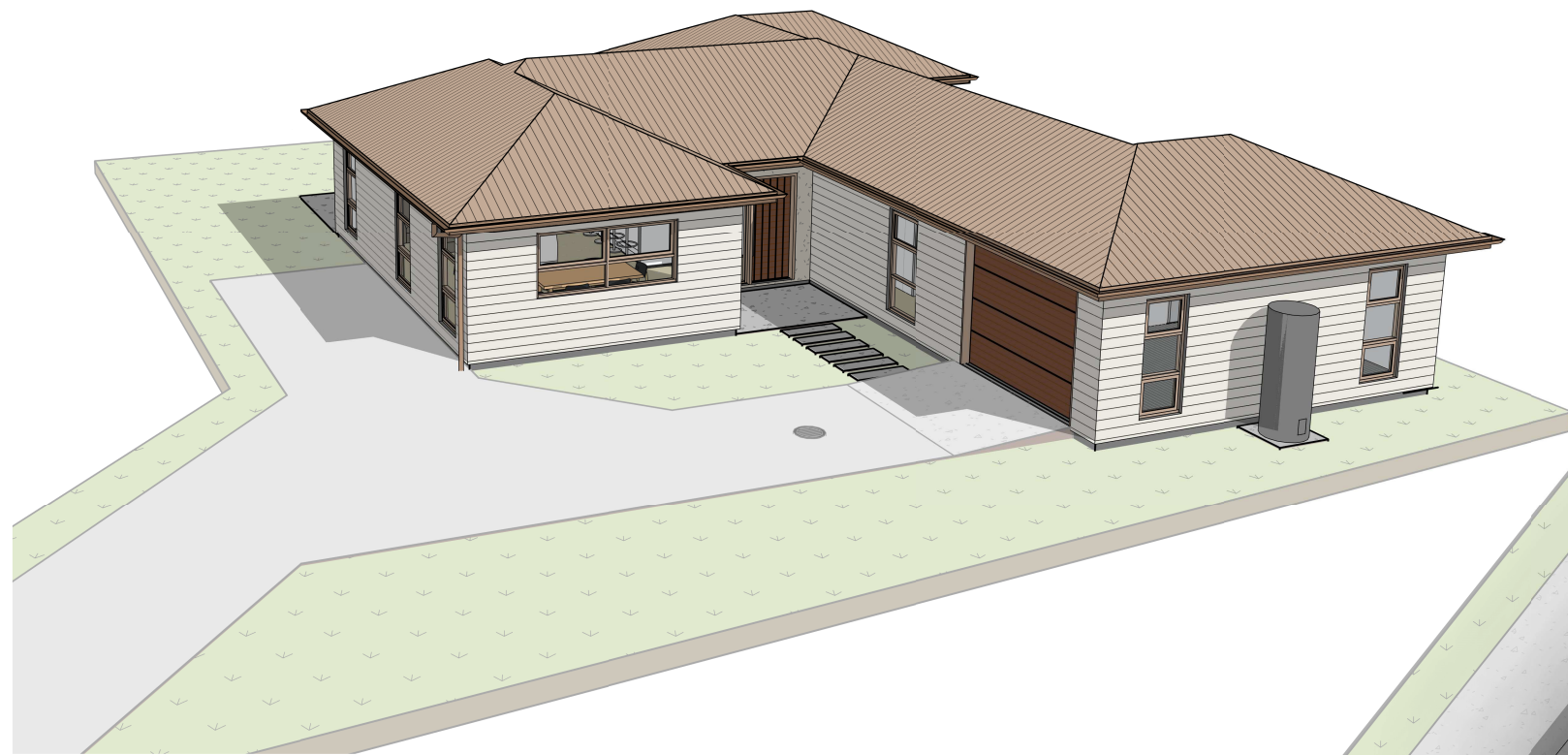
WAINGĀKAU
Housing Development Limited



SIMPLY ARCHITECTURE

Floor Plan

This drawing is copyright & remains the property of:



WAINGĀKAU
Housing Development Limited



SIMPLY ARCHITECTURE

3D Views

All features, dimensions, colours, finishes and locality are for display purposes only and are subject to change.

This drawing is copyright & remains the property of:



Waingākau Housing
Development Ltd

NOHO MAI
LIVE HERE

Kōrero mai

Contact us

Call: 06 871 5350

Email: info@waingakau.co.nz

www.waingakau.co.nz