



# INNER WHEEL OF PLIMMERTON

December  
2014



## MERRY CHRISTMAS EVERYONE

### Pauline's Ponderings

Dear Ladies –  
'Light the Path',

Friendship, Personal Service and  
International Understanding.

The countdown has almost run its course and the Big Day is almost here! Yes, it is time to celebrate our Christmas meeting on Tuesday!! It will be a wonderful night to just enjoy each other's company, have some fun and of course enjoy some great Christmas food! We have received, wrapped and delivered the Angel Tree, Prison Fellowship gifts. Thank you so much to those who bought, wrapped and delivered – we are fortunate to be able to make the Christmas of some of the children so much better!

Christmas is the one season where we can so easily focus on what it is that makes us thankful and our family and friends become the

easiest people to think of in these terms. I would like to take the opportunity to thank the ladies on the committee who have supported me so well in this first six months of my Presidency. The tenants of what Inner Wheel stands for, Friendship, Personal Service and International Understanding, are our motivating focus and as we look back over 2014 and forward to 2015 those principles hold us in good stead to continue to give substance to who we are and what we do.

At our committee meetings we have been turning our minds to the year ahead and we have a very busy programme of events coming up in the first three months of 2015. Pizza and Plonk kicks off 2015 at the Reidy's property at Ration Creek. We are very grateful to Janet and Philip who graciously host this event year after year! The February meeting is also organised; followed by our fundraising event "Wild Sunday.

The month of March will be a really busy one for us all. Meryl has her District Training Day on the 14<sup>th</sup> March at Aotea College and we will be supporting her with food for morning tea, lunch and afternoon tea.

All of you who will be continuing on the committee and committed to supporting Carolyn and the Club through committee membership for 2015/2016 need to have this date safely in your diary so that you can take advantage of the great training that is shared at that time. Even if you are not taking a role on the committee it is still a great event – Meryl always comes up trumps with great speakers.

March the 21<sup>st</sup> is our Plimmerton Inner Wheel 25<sup>th</sup> Anniversary celebration and you will all have received invitations for that. We have been able to track down and invite all of the original Charter membership along with all of the

past Presidents so we are already compiling the list of attendees.

March 28<sup>th</sup> is the Plimmerton Rotary Book Fair where we will once again be holding our Café and we of course have lots more activities that will unfold as the year progresses.

Looking forward to seeing you all on Tuesday night!!

Yours in friendship  
Pauline

### Mah Jong



Another great year of Mah Jong finished on Wednesday with a fun evening of

playing for “special hands”, followed by a most delicious shared Christmas supper and drinks.

We have had wonderful attendances throughout the year and our membership stands at 35.

We have welcomed 8 new members this year and they have all picked up the game very quickly, although a little nervous playing on the “big peoples” tables 😊. But the more you play the easier it becomes.

We gave out 3 prizes for those members who did “Civil War” this year – Jocelyn Moller, Carol Woodfield and Janet Reidy. This hand is not for the faint hearted and is one of the harder hands to do. Well done to those three. Our Mah Jong cup this year went to Jocelyn Jackson who finished with 96 Mah Jongs and 71 fishings. 2<sup>nd</sup> place went to Bev

Lillico with 90 Mah Jongs and 46 fishings; 3<sup>rd</sup> place to Lauris Heather with 86 Mah Jongs and 52 fishings; 4<sup>th</sup> place to Barb Nicols with 76 Mah Jongs and 36 fishings and 5<sup>th</sup> place to Eunice Young with 73 Mah Jongs and 53 fishings. Congratulations all those members but particularly to our winner Jocelyn – excellent work.

Our Club is a very friendly one with lots of laughter and friendship. We don’t do serious scoring, but just how many Mah Jongs we get in an evening, but mostly we play for the share enjoyment of this wonderful game.

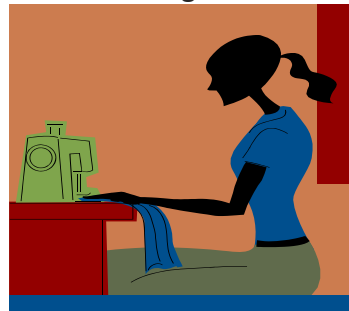
I am very grateful to have Barb who takes care of our finances – thanks Barb.

If you would like to join us, we meet every Wednesday night at St Mary’s Church in Whitby from 7pm - 9pm. We begin the new-year in the second week of February.

Marg Pine

### Silky Pillows and Wheat Bags

A huge hanks to all those who either made the pillows, made the wheat bags and /or filled them. As you know these are very well received at the hospital and we will be making more for next year.



The Book Club had a great trip to the Holocaust Museum in Wellington as their final meeting for the year



### And the Craft Group

Met for the final time this year, last week at Dianne Roberts place - a very “crafty” morning followed by a fantastic Christmas lunch.

### 2014/15 DATES TO DIARY

**16 December:** District Chair Visit

**10 January:** International Day

**19 January:** Pizza & Plonk (numbers will be needed)

**12 February:** Tawa Bowling (Thursday evening)

**22 February:** Wild Food Sunday  
Almost all the tickets have already been sold so we are expecting a sell out as we had last year. A waiting list will be set up for those who would still like to come but have not let us know yet.

**14 March:** District Training Day

**21 March:** Our “Silver Anniversary” celebration

**28/29 March** Rotary Book Fair

**April** Ballantynes Fashion Show

**May** Pink Ribbon Cancer Lunch

**May** Movie Evening

**16 June** Club Change Over

**4 July** Change Over for District Chair (Meryl)

I will continue to add accurate dates and more information as it comes to hand

### THIS MONTHS MEETING

**Tuesday 16 December**  
**Aotea School Library, 6pm**

### *OUR CHRISTMAS PARTY AT HOME*

Drinks for the evening will be provided.

Also note that there will be 2 raffles – one for Hinemoa House, Levin, the other; our usual.

Please bring:

- A gift (no more than \$10) that will become the gift for a



fellow member  
BUT WHO!!.  
We won't know

till the game stops.

- Food item for the Cannons Creek Food Bank
- Old specs - Spec Savers provide these to Pacifica people who need them. Prescription sunglasses also welcome.



Yours in friendship and  
Merry Christmas to you all

Adrienne