

PLIMMERTON INNER WHEEL NZ294

November 2022



DATES FOR YOUR DIARY

14 November	Trip to Longwood Gardens & Lunch at Julia's	10am	Meet at Julia's - 35 La Lena Gr, Summerhill. Palmerston North
12 December	Christmas afternoon tea & Otaki shopping	1.30pm	Yvonne Groom's - 30 Raukawa Rd, Peka Peka.

UPCOMING REGULAR EVENTS

7 November	Book Group (new date)	2pm	Sheryl's house - 33 Bayview Rd, Paremata
9 November	Mah Jong	7pm	St Mary's Church, Whitby - Every Wednesday
10 November	Craft group	10am	Maureen's - 31 Gray St, Pukerua Bay
15 November	Club Dinner Meeting	6pm	Boating Club - Plimmerton
6 December	Tasty Tuesday	6pm	TBC
5 -7 May 2023	National IW Confrence	TBC	Rydges Hotel, Wellington

MORE ABOUT UPCOMING EVENTS

NOVEMBER DINNER MEETING

PLEASE DO NOT PAY FOR YOUR MEAL AT THE BAR. Please continue to prepay the \$28 meal online beforehand. Drinks and raffles will be purchased on the night as normal.

Our speaker for November is Debbie Mair, she will speak on The Ecology of The Pauatahanui Inlet. She is an ecologist for Hutt City Council. Debbie has an MSc in erosion and sedimentation plus riparian installation and management.

JOYFUL CRACKER CAMPAIGN

LGFB make up Christmas Crackers as a fundraiser. These Joyful Crackers are sold for \$20. The products inside have a retail value well over that (\$80 to \$120). There are a limited number of crackers available, so please let Marg Nation know **by Tuesday 15th November** (club dinner night) if you would like to order. Please confirm how many crackers you would like and pay into the IW bank account using CRACKERS as the reference. You can email your order to Marg at nation@xtra.co.nz

GARDEN VISIT TO PALMERSTON NORTH – NOVEMBER

Monday 14th November - The Palmerston North Garden Group invite Plimmerton Inner Wheel and partners for a visit to Longwood Gardens, followed by lunch at Julia Mottram's home in Palmerston North.

We have been updated that the lunch will now be catered as a charity fundraiser. The cost is \$10 per person. Please bring cash on the day and pay at the door. This will also save the hassle of transporting food to Palmerston North

10.00: Morning tea at Julia's house - 35 La Lena Grove, Summerhill, Palmerston North.

11.00: Carpool to Longwood Garden, Stoney Creek Road. **\$8 entry**

1.30: Lunch back at Julia's house. This will be a catered lunch **\$10 cost**

Sheryl has a list of those that are going, please let her know if you would like to go or need a ride.

CHRISTMAS AFTERNOON TEA – DECEMBER

Monday 12th December at Yvonne's house 30 Raukawa Road, Peka Peka - any time from 1.30pm onwards.

Club member Yvonne Groom is inviting us for afternoon tea and to view her amazing collection of Christmas decorations that will be all set up again. This is a great way for Yvonne to connect with club members as she does not attend our dinner meetings. It will be a great day out for our new members too.

We can travel individually, or carpool together. We usually stop at Raumati Village and/or Otaki outlets shops on the way there for a spot of Christmas shopping and finish up with afternoon tea at Yvonne's.

A reminder to please let Velma Knight know your service hours: neonates knitting, silky pillows, teddies for Ukraine, sewing for Days for Girls, street appeal hours, baking etc

SHERYL'S SUMMARY

Our Inner Wheel monthly calendar is quite busy, which is why we sometimes have a fundraiser as part of our dinner meeting. The October Bring and Buy was the fundraiser for LGFB. It was also a way of sharing a bit of ourselves and our talents with each other. Did you discover someone else's hidden talent?



Our club has routines, but reliably there are changes. I hope that we can support each other as the different needs arise within our club. Let us know where we can help. Some of us may need to be prompted, but we are only too happy to help. I am inspired by some amazing energetic members who seem to be everywhere, and in touch when there is a need.

Thank you

LAST MONTH'S HAPPENINGS

OCTOBER DINNER MEETING



Sue Jameson, our District Chairman spoke about the purpose of Inner Wheel.

Friendship has been demonstrated to contribute to our physical and mental health, quality, and length of life. She talked about how this is relevant to all ages

Sue spoke about the idea of forming Inner Wheel groups for younger women as well. She encouraged and commended us at Plimmerton Inner Wheel for keeping such a strong active club. She also encouraged us to keep stretching ourselves personally by trying things outside our comfort zone.

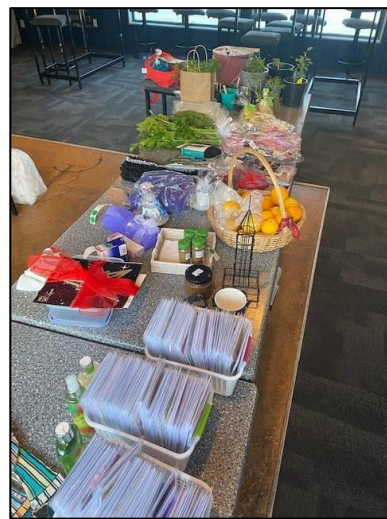


BRING & BUY FUNDRAISER FOR LGFB

The October meeting had a fundraising sales table loaded with produce, plants, crafts, baking and bric-a-brac. It was a fun exchange with a good result.

The sales table raised \$295, and the raffle raised \$150. That's \$450 for Look Good Feel Better.

Thank you everyone for your generous contributions.



BRAS & KNICKERS FOR AROHATA PRISON

What a joyous pile of bags to deliver to Zonta! Thank you again so much for your wonderful generosity. There are some beautiful pieces of underwear. It is a very practical way of caring. These things say, "you are worth it, we care, look after yourself, take heart."

I think, some of you put the word out for the collection to your friends and mentioned it even before I put out the request. That was good planning because the request from Zonta often comes late in the year.

This is what 90 bras and over 50 pairs of knickers look like



PINK RIBBON COLLECTION

Thankyou Janet & Sheryl for volunteering for the Pink Ribbon Street Appeal last month at short notice.

MARY POTTER AWARD FOR BRENDA

Last week Brenda Callear was presented with an Award of Appreciation for her 15 years of service in fundraising for Mary Potter Hospice.

Every year Brenda has hosted a fundraiser luncheon at her house with the Judgeford golfing ladies. Well done and well-deserved Brenda. Your selfless energy in serving different charities is inspiring.



TAWA IW CLUB RAFFLE WINNER

Congratulations to Janet Reidy who won 2nd prize in the Tawa Club raffle fundraiser. What a huge basket of goodies - Congrats Janet!

POLICE COLLEGE MUSEUM VISIT

October's Try Something Different was a trip to the NZ Police College Museum. It looks like an enjoyable time was had by everyone, Sheryl in particular!





We are supporting 11year old Sithan Boun and his whole village through World Vision with part of the proceeds from our monthly Plimmerton Inner Wheel raffle.

Sithan lives on a small farmlet in Chi Kreng in Cambodia with his parents, brother, and sister. He is in good health thanks to the education and safe drinking water supplied to his village by World Vision.

We get updates and letters from him from time to time and a yearly report which you will see at the next meeting. Sithan attends school and is learning to read and write thanks to the World Vision literacy project. He helps with the family cows and loves soccer.

ENTERTAINMENT BOOK

We have been supporting Wellington Free Ambulance for many years now by selling the Entertainment Book. This is now only available in "easy to use" app form which is very handy as you always have it on your phone. 20% of the sales income goes to Wellington Free Ambulance.

Be quick to take advantage of the **special offer** which is available until **24th November**. Buy a Single City membership for \$69.99 and get a free UPGRADE to a Multi City membership (covering 20 cities) worth \$119.99. Multi city gives you discounts in Wellington, Auckland, Christchurch, plus Australia. It offers 'buy one get one' free meals, discounts on car hire, activities, flights, shopping etc

It's a win-win as many of you already know - you very quickly recover the cost of your membership, and you're supporting WFA at the same time.

Your membership lasts for a year from the date of purchase and often an extra month is included.

This makes a great gift for family and friends this Christmas. Let's raise as much as possible this year for this great cause.

Please click on this link: once in, Click on the **Join Now** icon

<https://subscribe.entertainmentnz.com/fundraiser/111019>

Thank you to Carol Woodfield for these 2 articles.

WOMEN'S REFUGE TOILET BAGS

Barbara Nichols has put together about 24 toilet bags of goodies ready to deliver to The Women's Refuge. There is a wee note inside each bag that says "please enjoy this gift from the Inner Wheel club of Plimmerton"

Barbara still has a few more bags to pack. If you have any unwanted small toiletries that could be used in this way, please let Barbara know. She supplements them herself with small items.

Sheryl has had two letters of response from them stating how much the ladies love receiving them. Fantastic, Barbara!



IWNZ CONFERENCE WEBSITE

The Conference Committee and our District NZ294 are delighted to be welcoming you all to Wellington on 5 -7 May 2023 for the IWNZ conference.

The IWNZ conference website is now live. You can click on the link below to find out all the information and details you need to know. Do keep an eye on the website over the coming months for updated information. **Click here.** <https://www.innerwheel.org.nz/Conference-2023>

Important Dates for Your Diary:

Registrations Open - 5th January 2023

Early Bird Closes - 5th February 2023

Your chance to win back your Early Bird Registration Fee (drawn on Sunday at Conference) \$290.

Registrations Close - 5th April 2023

Registration Includes:

Members \$290

- Friday Opening Ceremony
- Saturday Conference Sessions including Lunch
- Gala Dinner at The Beehive
- Sunday Conference Sessions and Morning Tea

Partners \$190

- Friday Opening Ceremony
- Gala Dinner at The Beehive
- Sunday Conference Sessions and Morning Tea



BOOK RECOMMENDATION

Lyndsay has given me a list of favourite book titles and authors that the Book Group members have enjoyed and recommend. I will share a book each month that you may like to try.

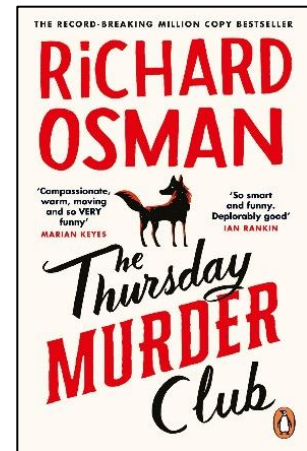
The Thursday Murder Club - Richard Osman

In a peaceful retirement village, four unlikely friends meet up once a week to investigate unsolved murders.

But when a brutal killing takes place on their very doorstep, the Thursday Murder Club find themselves in the middle of their first live case.

Elizabeth, Joyce, Ibrahim, and Ron might be pushing eighty, but they still have a few tricks up their sleeves.

Can our unorthodox but brilliant gang catch the killer before it's too late?



PARTING WORDS

Spending time with friends and family is special, and as Sue Jameson mentioned in her talk to us last month, friendship and socialising really does contribute to our overall mental health and well-being.

If you have time on your hands, or feel like some company, maybe consider phoning an inner wheel friend and meet for lunch or coffee & cake. Better still, perhaps connect with a member that you don't know very well. It will be easier to get to know a person one-to-one than it is in a large group setting like our dinner meetings. It is nice to receive invitations out of the blue and making new friends is always uplifting.

Yours in friendship Karen 😊



HAPPY BIRTHDAY

- Dinah McEwen
- Helen Henkes
- Janet Reidy
- Lorraine Whyte
- Pauline Moult



REGULAR EVENT INFORMATION

Tasty Tuesday: 1st Tuesday of the month at 6pm

A group meets on the first Tuesday every month for a meal, chat, and a good laugh. For more information contact Diana Paris 234 7683.

Mah Jong: Every Wednesday at 7pm

This group, initiated by Marg Pine has been running since 2007. They meet every Wednesday night at St Mary's Church in Whitby from 7-9pm. New members welcome. For more information contact Marg Pine 021 610 906.

Book Group: 2nd Monday of the Month at 2pm

We each give a talk on books we have read in the past month; we don't all have to read the same book. For more information contact Lyndsay Kelly 234 7238.

Craft Group: 2nd Thursday of the month at 10am

Everyone takes along their own project, fun and fellowship is had by all. For more information contact Maureen Barber 239 9528.

Table for 8: Saturday evenings

You are invited to join a group of Inner Wheelers (partners are welcome too) for a pot luck dinner on a Saturday evening. The host usually cooks the main dish, and each person brings a course or side dish. Dates will be advised. If you would like to be included in the group, please contact Julie McLagan 021 425 872.

YOUR COMMITTEE

<p>President Sheryl Perera 022 098 5516 saperera2022@gmail.com</p>	<p>Vice President Joy Creet 027 679 4333 joy.creet@gmail.com</p>
<p>Secretary Christine Harrison 027 300 6734 christineh656@gmail.com</p>	<p>Editor Karen Warner 027 5744 054 karen@perfectorder.co.nz</p>
<p>Treasurer Margaret Nation 021 515 691 nation@xtra.co.nz</p>	<p>Raffles Julie McLagan 021 425 782 jmclagan@seagulls.co.nz</p>
<p>ISO Velma Knight 027 281 1809 dvknight@xtra.co.nz</p>	<p>Attendance Karen Paulin 021 222 9471 admin@straitconstruction.co.nz.</p>
<p>Website www.innerwheel.org.nz www.internationalinnerwheel.org</p>	<p>Membership Anne-Marie Garrett 027 698 6024 amcl.garrett@gmail.com</p>
<p>Facebook Inner Wheel New Zealand</p>	<p>Almoner Maureen Barber 027 239 9000 jd.fam@xtra.co.nz</p>
<p>Transport Should you need a Driver please contact Maureen Barber on 239 9528</p>	<p>If you, or someone you know, is experiencing illness or difficulties, please let me know. I will contact you or your family to identify how we can best support you.</p>
<p>IW Bank Account: 12 3254 0081449 01</p>	
<p>Absences If you advise us you are coming to a meeting, then do not come, we still require you to pay for your meal as we have committed for catering</p>	