

The
Rotary
Foundation



Newsletter Spring Update
District 9940



The background is a solid yellow color. There are three white diagonal lines: one from the top-left towards the center, one from the top-right towards the center, and one from the bottom-left towards the center.

CONTENTS

1

Bikes in Schools - District 9940 -
District Grant Progress Report

Pages 6 – 7

2

Music for Life Projects – Alzheimer’s
Wellington, and the Rotary Club of
Eastern Hutt. Read more.

Pages 8 – 9

3

Salk Institute for Biological Studies
Internship report.

Pages 10 – 12

UNICEF – Cook Island Nation
Immunization program

Page 13

4

District 9940
Foundation Account

Pages 14 – 15


5

Summary of Applications
District 9940

Pages 16 – 19

6





Welcome to this spring issue of our Rotary Foundation Newsletter, I hope you will enjoy the read. The newsletter will update you on what we have been doing in the past few months.

There are updates on our Global Grants and projects that our district are involved in along with club updates on what your funds have been used for in our own communities.

The Rotary Foundation believes in transparency and with that in mind we have reports showing what each club has given to the Foundation over the past few years as well as a breakdown on what your funds will be used in our district in the next 12 months.

What we haven't reported on is what individual Rotarians have gifted. Most Rotarians who donate as individuals prefer to keep these gifts to the Foundation private which we will always respect.

In the past 12 months we have seen a decline in donations from Rotary Clubs, this of course is a concern, and we would encourage clubs to consider giving a little more this year than was given last year.

There are many ways Rotarians can give to our foundation privately, it may be as a one-off donation, or Rotarians can choose to give an amount each year. One way to do this is by joining the Paul Harris Society, we have approximately 17 members in our District Paul Harris Society.

Another way is to consider becoming a Major Donor, this is a one-off gift of 10,000.00 or more.

Some Rotarians have become members of the Bequest Society, this is where an amount is left to The Rotary Foundation in their wills.

Whatever way you give to The Rotary Foundation, I want to assure you it is greatly appreciated. When you read through this report you will see how your donations are making a difference in the lives of others in New Zealand and all around the world.

We are contacted by Clubs around the world to join with them to assist clubs in districts from all around the globe, we send out requests to clubs to see whether your club would like to participate in these Global Grants and Projects, the take-up is somewhat disappointing, I would encourage your clubs to consider joining in one of these offers.

Rotary is International and I feel sometimes our clubs fail to connect in an international sense, so please do consider joining by donating to one of these projects. It is important to our Newer Rotarians to see the international nature of Rotary. Rotary is bigger than each of us, it is bigger than our clubs and districts, Rotary is International and we are all important parts of Rotary International.

If there is anything I can do to assist you in any way with our Foundation work please do not hesitate to make contact with me.

Simon Manning
Chair
The Rotary Foundation
District 9940

Bikes In Schools

District 9940 – District Grant Progress Report

Club

TAKARO

Month

February 2018

Project

Bikes in Schools

Start Date

September 2017

Complete Date

For the District grant monies November 2017

Schedule

Funds have been fully spent by Takaro School over the above period. Receipts for goods purchased have been sent to the schools storage system in Wanganui. They are currently getting copies of these so I can forward with my final report.

Risks & Issues

No risks or issues with this grant.

Finances

Money all spent and utilised by the schools bikes in school project.



Scope

We as a club have organised a family charity bike ride with pupils and their families in combination with a Manawatu Cycle Challenge event. This was well received by all involved and am sure we will continue with this event in future years. I have attached a copy of the bike ride flyer along with a photo of some of the kids and parents on the day. Have also put in some photos of the kids at Takaro school on their bikes.

Overall

This was a great project for our club and we have a huge involvement with Takaro school. Every week for the past 18 years we have supplied four rotarians to read with the children. We do this for 4 hours every school week. We also provide 3 scholarships for the school to present to children leaving Takaro and going to intermediate school. These help to cover uniform and stationary costs.

This year I will also organise family days at school where parents can come along and see their children on the bike track. The school is also teaching the children road rules and taking them out onto actual streets.

Music for life

A decorative graphic featuring several yellow musical staves and notes. The staves are curved and flow across the page. Various musical notes, including eighth and sixteenth notes, are placed on the staves. The background is a solid red color.

It has been known for some time that music can benefit people whose lives have been made difficult by the onset and progress of dementia. What is less clear is what music should be provided and how it is best presented; both to the person afflicted and to the care giver. Answers to these questions are being found. Alzheimers Wellington, and the Rotary Club of Eastern Hutt, supported by two District 9940 grants, have funded 2 research projects carried out by music therapist Rani Heath.

Emma Fromings, Alzheimers Wellington, identified a music recorder and player of an MP3 type which has very simple controls (on/off and “move on”) that a mentally compromised person can operate. The player, developed by the Memory Lane Company, looks like an old fashioned radio of the style older folk will remember. These machines, branded “Simple Music Player”, can be loaded with tunes and songs selected by the afflicted person during the early stages of dementia while they are still able. Rani’s experience with the people involved with the trial showed that the choice of music was highly individual; what suited one did not

suit another. Even the specific arrangement and the artist performing were often part of the memory that goes along with the item. These memories, triggered by the musical item, had connections to the past life of the listener. As the dementia progresses those musical memories are retained and the Simple Player becomes a treasure. It is much more valuable than the bulk music that plays in the background of dementia wards.

The second subject for enquiry arose from the home visits that were part of the selection of music for the unwell people. It focussed upon the relationship of couples who are together at home and not yet in care facilities. As dementia progresses couples become stressed; often severely. That distress may well be the primary reason that the afflicted person goes into care. Could music therapy be used to calm both parties and assist their relationship together; even to extend their time together?

In Rani’s trial, 10 therapy sessions were conducted from October through December 2017.



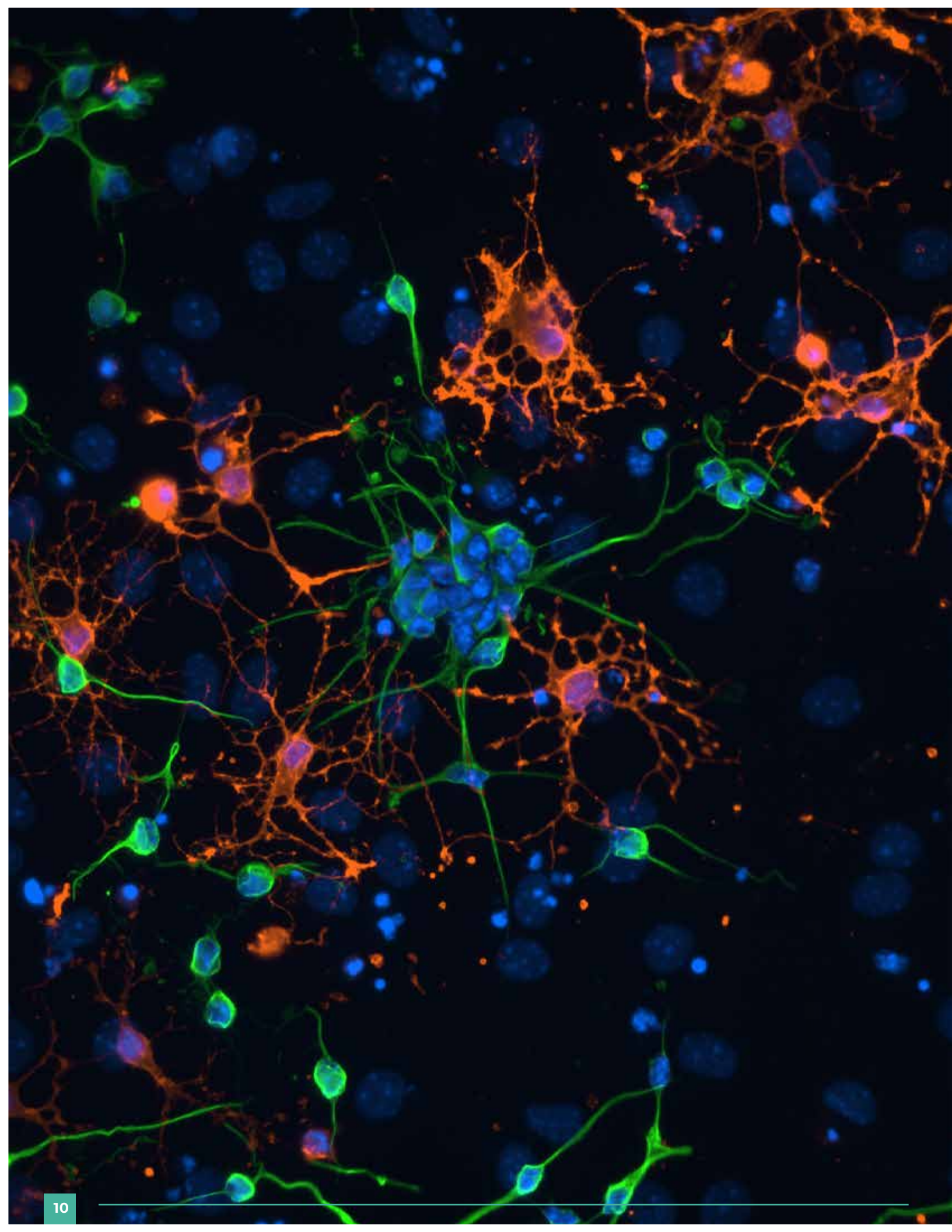
Questionnaires, both at the beginning and at the end of the course, were used to see if the couple were benefiting individually and together. The responses show that:

- Having a supportive trusted group so they could talk among themselves about their common experiences, was important. There was no other group available for couples still at home. This therapy was being done in the community; not in rest homes.
- Because the dementia fluctuates week by week there was no steady state so measurement of the impact of the therapy was hard to achieve.
- The couples who had recently received diagnosis of the dementia (at the early stages of the evaluation) relaxed during the sessions and began joking about their experiences.

- Music allowed the demented person to be involved in what was going on. Discussion groups by contrast leave the demented partner at a disadvantage because they can't find the words to express themselves.

Over all, the couples laughed a lot and found the sessions enjoyable. Musical experiences of the past were shared experiences that brought back happier times. Inappropriate experiences of the recent past were set aside for a time. This gave the caring partner time and perspective to see what was happening in their changing relationship.

Information arising from the trial work is being prepared for publication and will be widely shared.



Salk Institute for Biological Studies Internship

Between 9 April and 11 May 2018 I undertook an internship at the Salk Institute for Biological Studies in La Jolla, California. Funding for this internship was via a Rotary International Scholarship with the support of Rotary Club of Plimmerton.

The aim of the internship was to gain practical experience in the creation and maintenance of induced pluripotent stem cells (iPSCs). The Salk Institute has a Stem Cell Core Facility in which Core staff who specialise in stem cell work produce and maintain stocks for the Institute as well as providing guidance for other researchers both within the Institute and collaborators. They also create iPSCs for fee-paying external researchers who do not have access to the appropriate facilities on a small scale basis.

I underwent training supervised by Ken Diffenderfer, Core Lab Manager, and Aimee Pankonin in the following techniques:

- Sendai virus cell reprogramming in Feeder Free Conditions
- Colony picking
- Plate Coating
- iPSC Thawing
- iPSC Passaging
- iPSC Freezing
- iPSC validation techniques



The staff generously gave access to their protocols and media preparations which I have adjusted for use at the GMRI based on our facilities. They also provided plenty of tips on assay technique and troubleshooting as well as recommendations for consumables. One of the most valuable aspects was to be able to take advantage of their experience. For example the reprogramming kit instructions suggest that four cell lines may be reprogrammed with the kit. At the Salk they have found that making a few adjustments leads to the comfortable reprogramming of eight cell lines which results in a significant cost saving.



Salk staff have also indicated they are eager to stay in touch as we progress through the process of setting up an iPSC programme of our own at the Gillies McIndoe Research Institute. They are happy to provide remote support such as reviewing photographs taken and giving advice when we run into problems. They are also able to connect us to other researchers within their network who may be able to provide support also.

Overall I think the internship was both successful and valuable. We met our main aim of gaining practical experience with iPSCs and we were also able to begin creating a new network of contacts for future support and collaboration moving forward in this field.



Immunise 100,000 children across nine Pacific Island countries



Give Every Child A Future - Our Australasian Centenary Project



Overview

2021 marks the Centenary of Rotary in Australasia. This is a unique chance to celebrate all Rotary's achievements over the last 100 years and demonstrate the enduring relevance of the Rotary motto "Service above Self." For this key milestone, Rotarians in Australia and New Zealand, in collaboration with UNICEF and partners, have a bold ambition: To immunise 100,000 of the most disadvantaged children across the Pacific in four years.

The context

Despite some improvements in immunisation rates across the Pacific, more needs to be done to stop diseases such as cervical cancer, pneumonia and diarrhoea claiming lives across the region. For example, in the Pacific Island country of Kiribati, shockingly 1 in 18 children die before their fifth birthday.

Immunisation Program:

2018- 2021

Across nine Pacific Island countries - Cook Islands, Kiribati, Nauru, Niue, Samoa, Tokelau, Tonga, Tuvalu and Vanuatu – Rotary will help introduce three life-saving vaccinations to prevent diseases including cervical cancer, severe diarrhoea, pneumonia, blood infections (such as sepsis) and meningitis.

Impact

Rotary and UNICEF are aiming to reach 100,000 children including adolescent girls within four years. However, this is just the beginning: Rotary's support will help strengthen the broader health system for the sustainable delivery of vaccines, so that future generations will continue to benefit in the long term – a truly inspiring Rotary legacy.

Vaccines



Rotavirus

against severe types of diarrhoea



Pneumococcal Conjugate (PCV)

against pneumonia and blood infections



Human Papilloma virus (HPV)

against cervical cancers

Funds will support



Vaccines

Procurement



Supplies

Cold chain equipment, other supplies and logistics



Education

healthcare workers, communities and partners



Technical support

policy, management and system strengthening

Donate and for more information:
everychildafuture.com

DISTRICT 9940 FOUNDATION ACCOUNT

GIVING TOTALS

FROM 2010/2011 TO 2017/2018

		2017-2018	2016-2017	2015-2016	2014-2015	2013-2014	2012-2013	2011-2012	2010-2011
CLUB	Destination	brown	garcia	manning	scott	gimblett	blick	smith	tong
Awapuni	APF-SHARE	1750	1760	1650	1360	1490	200	1765	1430
Awapuni	Polio Plus	1100	1000	1000	1000	1000	0	1240	1330
Carterton	APF-SHARE	2000	3200	3200	3300	5430	425	3100	2000
Carterton	Polio Plus	1594	1000	733.5	500	1490	0	3320	0
Courtenay Place	APF-SHARE	550	3000	3800	1330	1745	1000	355	704
Courtenay Place	Polio Plus	0	0	500	0	0	20	0	0
Dannevirke	APF-SHARE	200	200	350	300	860	1000	1000	923
Dannevirke	Polio Plus	0	0	0	0	500	500	1000	100
DISTRICT 9940	Polio Plus	430	0	0	10125.41	0	0		
Eastern Hutt	APF-SHARE	1100	1250	1250	2368.55	4535.22	4200	7900	9545
Eastern Hutt	Polio Plus	1000	1050	2000	2000	1023.7	2000	0	0
Feilding	APF-SHARE	0	1700	1500	1040	2400	1200	1500	1500
Feilding	Polio Plus	900	300	1252.1	900	300	1500	750	1720
Fitzroy	APF-SHARE	0	900	830	790	700	600	745	891.67
Fitzroy	Polio Plus	150	700	730	690	800	500	620	666.67
Foxton	APF-SHARE	640	750	700	1456	1400	2000	2200	2100
Foxton	Polio Plus	400	0	100	0	0	280	1307.2	1249.22
Harbour City Wellington	APF-SHARE	0	0	0	1600	1300	2650	4930	1350
Harbour City Wellington	Polio Plus	0	0	0	0	1000	1000	137.98	0
Hawera	APF-SHARE	0	0	0	0	2000	2000	2100	2000
Hawera	Polio Plus	0	0	50	0	500	500	500	500
Heretaunga	APF-SHARE	0	2400	5200	0	2700	5400	0	3200
Heretaunga	Polio Plus	0	1500	3000	0	3000	3000	0	2000
Hutt City	APF-SHARE	250	2250	2000	7150	7000	9375	12767	6934
Hutt City	Polio Plus	0	540	450	0	3500	3000	2261.98	1000
HUTT RIVER VALLEY	PERMANNENT FUN	0	0	0	0	1190			
Hutt River Valley (Stokes Valley)	APF-SHARE	385	240	350	2600	5423	2400	0	4361.22
Hutt River Valley (Stokes Valley)	Polio Plus	0	0	0	0	172.07	0	0	798
Hutt Valley	APF-SHARE	1545	4690	4300	3700	4100	2100	5500	350
Hutt Valley	Polio Plus	0	1000	1000	4500	1000	2000	1476.98	0
Inglewood	APF-SHARE	445	2000	1200	0	100	100	0	100
Inglewood	Polio Plus	0	700	100	0	0	1000	0	1600
Inglewood	OWORI POLIO	250							
Johnsonville	APF-SHARE	725	2175	945	550	725	1770.05	2843.33	1375
Johnsonville	Polio Plus	0	2000	1200	0	1000	1052	0	0
JOHNSONVILLE	PERMANNENT FUN	0	0	494.45	91500				
Kapiti	APF-SHARE	4700	5987	4475	8880	10975	4500	3200	4000
Kapiti	Polio Plus	1542	239	1000	4000	2000	2000	2000	2921.07
Karori	APF-SHARE	2720	4090	3815	7385.23	770	2119	5655	7475
Karori	Polio Plus	792	500	848.6	3280.5	0	100	170	1790.7
KauKau	APF-SHARE	600	2350						
KauKau	Polio Plus	250	500						
Levin	APF-SHARE	2235	4000	5360	1300	3200	4235	4890	3855.6
Levin	Polio Plus	0	1000	447	1000	1000	0	0	2000
Makino	APF-SHARE	1220	2200	4550	140	1600	200	2747.4	600
Makino	Polio Plus	350	700	1450	0	750	0	0	0
Marton	APF-SHARE	550	5850	3400	2975	300	2155	2800	300
Marton	Polio Plus	0	0	8000	1500	0	1500	5037.98	0
Masterton	APF-SHARE	100	1100	1100	1100	1100	1600	800	1850
Masterton	Polio Plus	121	1000	1000	500	1000	1000	1200	500
Masterton South	APF-SHARE	640	740	3500	1100	3700	5500	11200	6400
Masterton South	Polio Plus	137	0	2000	0	2000	2500	3000	1500
Milson	APF-SHARE	2000	2000	3360	3293.34	3500	3737	3757.5	3500
Milson	Polio Plus	600	200	200	760	2190.3	0	100	2600
Milson	OWORI POLIO	250							
Mount Victoria	APF-SHARE	1125	0	950	0	400	525	700	1750
Mount Victoria	Polio Plus	0	0	1520.85	0	0	25	0	0
NEW PLYMOUTH	PERMANNENT FUN	0	0	0	500			10000	
New Plymouth North	APF-SHARE	3116	1190	2641	1886	1380	100	1240	100
New Plymouth North	Polio Plus	600	1201.4	600	161.1	0	0	0	0
New Plymouth West	APF-SHARE	1515	2090	2082.5	225	1682	3300	900	1350
New Plymouth West	Polio Plus	300	380.3	750	0	0	0	0	0
NGAMOTU New Plymouth	APF-SHARE	0	2500	1530	0	0	0	2170	0
NGAMOTU New Plymouth	Polio Plus	250	970	0	950	0	0	3100	0
Otaki	APF-SHARE	2565	1400	530	600	200	1350	2350	1500
Otaki	Polio Plus	1465	1700	620	2500	0	1000	1250	0
Pahiatua	APF-SHARE	0	0	0	0	0	1000	0	0

Pahiatua	Polio Plus	0	0	0	0	0	0	37.98	0
Palmerston North	APF-SHARE	1050	1250	5125	0	2000	2000	2532	0
Palmerston North	Polio Plus	2500	0	11000	0	2000	0	5032	0
Paraparaumu	APF-SHARE	600	800	400	2500	4900	400	2880	2900
Paraparaumu	Polio Plus	0	785	0	500	1000	300	0	0
Pencarrow	APF-SHARE	1839	1500	500	4000	2000	0	0	2900
Pencarrow	Polio Plus	1000	500	500	1667.6	1600	0	132.95	5362
Petone	APF-SHARE	324	3800	6130	310	2470	3243.5	3320	3259.95
Petone	Polio Plus	250	4071	4310	0	2300	2000	1250	3770.7
Plimmerton	APF-SHARE	3321	4010	3540	3570	6020	4030	12055	6925
Plimmerton	Polio Plus	2302	500	500	0	1095.9	1780	0	2055.84
Porirua Sundown	APF-SHARE	485	1910	2450	1915	2520	3065.05	2480	2370
Porirua Sundown	Polio Plus	255	0	700	283.8	1161.3		337.98	1732.3
Port Nicholson	APF-SHARE	9270	11170	10350	10300	12426.36	9450	9616.3	8845
Port Nicholson	Polio Plus	0	600	2209.9	3098.1	0	0	889.34	28230
Pukekura Breakfast	APF-SHARE	0	450	2000	0	1800	2000	2900	2200
Pukekura Breakfast	Polio Plus	100	50	0	0	400	900	0	1500
Raetihi-Ohakune	APF-SHARE	1200	1200	1200	1240	1800	2460	0	1330
Raetihi-Ohakune	Polio Plus	800	800	800	800	600	1220	0	0
South Wairarapa	APF-SHARE	3500	3500	3500	3500	3500	3500	6990.03	2000
South Wairarapa	Polio Plus	2492	1500	1500	1500	1500	1500	2033.64	2550
South Wairarapa	OWORI POLIO	100							
Stratford	APF-SHARE	500	500	500	500	500	0	0	0
Stratford	Polio Plus	500	500	500	1580.5	500	1000	1000	1990.9
Taihape	APF-SHARE	1110	1290	1590	1645	1725	1405	1450	400
Taihape	Polio Plus	250	250	200	500	500	500	2050	0
Takaro	APF-SHARE	250	600	1815	250	1330	4000	3570	650
Takaro	Polio Plus	749	420.6	432.6	1477.7	1301.4	0	37.98	650
Tawa	APF-SHARE	4100	5240	4710	9235	610	4440	4350	4842
Tawa	Polio Plus	1488	1329	903	250	0	0	2500	3604.33
Terrace End	APF-SHARE	1000	1052	2232	1104	1104	1168	1336	1748
Terrace End	Polio Plus	517	779.5	1843.6	0	1210.4	0	0	0
Upper Hutt	APF-SHARE	2000	2000	2000	2000	0	1000	1000	1150
Upper Hutt	Polio Plus	200	0	0	2000	0	1000	1200	1150
Waikanae	APF-SHARE	360	576	720	756	792	900	892.8	1097.25
Waikanae	Polio Plus	180	412	240	424	264	300	1547.6	0
Wainuiomata	APF-SHARE	0	0	0	0	0	840	600	504
Wainuiomata	Polio Plus	0	0	0	0	200	800	500	504
Waitara	APF-SHARE	500	500	500	500	0	500	1311	665
Waitara	Polio Plus	500	500	500	0	480	100	0	0
Wanganui	APF-SHARE	3750	5240	4000	5055	700	5120	1010	5400
Wanganui	Polio Plus	1689	1500	1500	3500	0	2500	0	1080
Wanganui Daybreak	APF-SHARE	2100	4500	2900	100	600	100	700	850
Wanganui Daybreak	Polio Plus	450	0	1000	0	0	0	40	500
Wanganui North	APF-SHARE	1100	1200	2200	200	1200	2210.75	1542.7	589.8
Wanganui North	Polio Plus	0	500	0	710	435.1	0	0	964
Wanganui North	OWORI POLIO	826							
Wanganui South	APF-SHARE	2000	1600	2100	100	2100	100	1400	100
Wanganui South	Polio Plus	0	0	100	0	0	700	0	0
Waverley-Aotea	APF-SHARE	0	0	0	0	0	1600	800	900
Waverley-Aotea	Polio Plus	0	0	0	0	0	0	0	0
Wellington	APF-SHARE	8737	10700	10443.32	10415	14006.47	20700	15810	16008
Wellington	Polio Plus	150	0	50	0	1565.3	0	0	100
Wellington Central	APF-SHARE	0	0	0	910	1960	1940	900	1200
Wellington Central	Polio Plus	0	0	0	733.8	0	0	1000	600
Wellington North	APF-SHARE	1201	2400	6090	4207	695	2600	4450	3887
Wellington North	Polio Plus	0	1000	150	1082.32	193	0	0	500
WELLINGTON NORTH	PERMANENT FUN	775							
Wellington South	APF-SHARE	6001	5366	6071	5515	4941	6196.83	7585	5874
Wellington South	Polio Plus	250	250	250	250	1105	0	0	2485
Western Hutt	APF-SHARE	0	0	0	0	0	370	1218	1090
Western Hutt	Polio Plus	0	0	0	0	0	500	100	300
Woodville	APF-SHARE	0	0	0	0	0	0	0	0
Woodville	Polio Plus	0	0	0	0	0	0	1000	0
z-DISTRICT 9940 POOL	APF-SHARE	0	0	200	0	170	0	0	0
Z-DISTRICT 9940 POOL	Polio Plus	1070	75	100	0	0	189.49	0	0
APF-SHARE		96,874	153,874	178,360	161,191	143,835	153,500	185,514	151,129
POLIO PLUS		32,299	37,253	64,271	56,668	43,637	39,519	49,162	81,905
PERMANENT FUN		775	0	494	92,000	1,190	0	10,000	0
NZ\$		127,148	184,727	235,375	302,960	188,663	193,020	244,676	233,034
		2017-2018	2016-2017	2015-2016	2014-2015	2013-2014	2012-2013	2011-2012	2010-2011

Summary of Applications

Club	Summary	
Awapuni	CanTeen People Mover Van: A van is an essential part of their activities and they are severely restricted to what support they can deliver to the children. CanTeen is the only NZ agency supporting people 13 - 24 who have cancer	
Eastern Hutt	I Pads for special needs students at Naenae College	
Hutt City	Innovative Young Minds: Contribution towards cost of this programme	
Hutt River Valley	Dictionaries in Schools	
Hutt Valley	2019 Teacher Exchange Programme: Building on the reciprocal teacher exchanges of 2017 and 2018, a team of four teachers from NZ and four teachers from China will make reciprocal visits in 2019. The visits will last 2 weeks for each visit with unique professional learning and development opportunities to improve their own language and teaching skills, deepen their understanding of another culture and share new curriculum pedagogy in their schools on their return. The 2019 exchange will build on the relationships developed from 2015 and will develop the sustainability of the exchanges.	
Kapiti	Volunteer Dental team to visit to Taveuni: The aim is to make year 7 & 8 children at 9 schools on the island dentally fit. As well as tending to their dental needs, undertaking restorations (fillings) they teach them oral hygiene and preventative training - both in teeth cleaning and diet counselling. They provide toothbrushes, toothpaste, and information packs on healthy eating choices. This is to set the children up so that they can concentrate on learning and not have to take time off school for major dental work when they are at High School.	
	Supply, install & facilitate training sessions for 3 AEDs	
Levin	<p>This project consists of two parts:</p> <p>Distribution and education about "Days for girls" kits to Ambrym Island Vanuatu. This is part of a worldwide project to empower girls through providing sustainable menstrual health solutions to girls who would otherwise miss school. Each kit lasts each girl up to 4 years.</p> <p>My plan is to take two or three local Interact students with me to assist with the distribution and education. For these students to also gain a better understanding of primitive village life and their struggle to obtain what we would consider every day necessities. To offer the students an insight into what Rotary can achieve.</p>	

District 9940

	Location	Own funds	\$ request	Recommend
	New Zealand	4,000.00	25,000.00	3,000.00
	New Zealand	3,542.00	2,530.00	2,530.00
	New Zealand	40,700.00	4,000.00	2,000.00
	New Zealand	1,620.00	1,620.00	1,000.00
	NZ & China	8,000.00	5,000.00	5,000.00
		4,000.00	4,000.00	4,000.00
		7,089.75	7,089.75	
		6,400.00	5,000.00	2,500.00

	Beds for Namuga	
	With the closure of Kimberley Hospital, Levin, in 2005, the Club has been able to acquire surplus hospital equipment and wish to send two containers to a new hospital complex at Namuga on the island of San Cristobal, which is at the south east end of the island, in the district of Makira, Solomon Islands. The shipment will consist of up to 40 surplus Howard Wright M4 beds and 17 collapsible wheelchairs. The two containers will be retained at Honiara for on-selling. The funds from these sales will be used to pay for labour to construct staff accommodation at the Namuga Hospital complex.	
Marton	Dictionaries in schools in the Marton and Bulls area	
Otaki	Supplying 1500 Duffy books in schools to Otaki School, Te Kura and St Peter Chanel	
	Supplying 180 Dictionaries in Schools to six schools in Otaki	
Porirua	Te Pahi - Sponsoring seats on the community bus to provide transport for children in Porirua to increase access to sporting and educational destinations	
Port Nicholson	Support the Kahurangi after school sports programme so that it can continue	
Taihapa	Dictionaries in local schools	
Takaro	Seniors Day out - getting the elderly who live on their own out for a day	
Tawa	Tawa have 5 separate applications	
	Donate a AED at the local MenzShedd	
	Town Centre Hanging Baskets - purchase of replacement potted plants	
	Funding of trees in Duncan Park Tawa to celebrate 50th anniversary of RC Tawa	
	Funding 100 traps/tunnels for Pest Free Tawa in urban backyards	
Terrace End	Dictionaries for refugee/migrant families	
Upper Hutt	Support for provision of trained teacher aids for special needs students. Currently the average reading age of students at Maoribank school is 2 years lower than the national average. This project aims to improve this result by providing classes with trained teachers aids for Gillian phonics 50 hours per term and Tuakana Teina buddy reading sessions 25 hours per term for the remaining 3 terms of the year. The aim is to enhance the effectiveness of the teacher by enabling them to have more one on one time with each student. Numeracy is also well below average and we will provide a teacher aid for 25 hours a term for their spring into maths programme for the remaining three terms also to aid teacher effectiveness.	
Wellington	Plant 100000 trees on Mt Victoria to restore native vegetation, reduce weed infestation, mitigate climate change and restore community recreation space	
Wanganui North	Native Tree Planting in Hilton Park. Aim is to gradually make more of the park useable for members of the public	

Available: 43529.6

		7,000.00	7,000.00	2,500.00
		880.00	880.00	880.00
		900.00	900.00	900.00
		900.00	900.00	900.00
		5,000.00	5,000.00	5,000.00
		4,500.00	1,500.00	1,500.00
		275.00	275.00	275.00
		1,000.00	1,000.00	500.00
		2,150.96	1,500.00	1,500.00
		831.20	750.00	0.00
		916.50	916.50	500.00
		1,161.50	1,161.50	500.00
		656.00	546.00	546.00
		3,000.00	3,000.00	3,000.00
		5,000.00	5,000.00	4,000.00
		2,000.00	2,000.00	1,000.00
			86,568.75	43,531.00

POLIO IN AFGHANISTAN

Why just mention Afghanistan when there are two other endemic countries Pakistan and Nigeria because of the 15 cases year to date 12 cases are in Afghanistan, all in one village. The most recent case was an 11 month baby girl whose family was opposed to vaccination however they did recently vaccinate 1.2 million children.



This photo is of a little girl being inoculated in a war territory amongst the shelter of an army vehicle. In the background are destroyed vehicles by war, they have a real issue getting to the children and not helped by the Taliban.

Stopping Polio in Afghanistan

The focus is on reaching every child with particularly those who have persistently missed. Afghanistan and Pakistan particularly at the borders need to work together to stop the virus for good and quickly find the virus wherever it is hiding. Much of the country remains Polio Free, despite the deteriorating security situation throughout the country. However these gains are fragile and must continue to respond wherever the virus emerges.

Why More Funds?

To end Polio we must stop transmission of wild poliovirus in the three remaining endemic countries.

We must also keep other countries polio free until we achieve certification and eradicate polio. Until then, up to 60 high risk countries continue to operate large-scale immunization campaigns to protect children against polio.

Rotary recently announced nearly \$100 million in grants to support the global effort to end polio, a vaccine-preventable disease that once paralyzed hundreds of thousands of children each year. The announcement comes as Nigeria marks two years without any reported cases of wild poliovirus, following four reported cases in 2016. With no new cases of wild poliovirus detected in Nigeria points to the improved surveillance and rapid response protocols. Rotary and its Global Polio Eradication Initiative partners have established, particularly in insecure and inaccessible areas.

This progress is promising; it's time to redouble our efforts so we can continue to maintain the political and financial support necessary to end polio for good. While significant strides have been made against the paralyzing disease, wild poliovirus is still a threat in parts of the world. As long as a single child has polio, all children are at risk, which underscores the need for ongoing funding and political commitment to eradication.

SO WHAT CAN WE DO?

Clubs need to continue to raise funds and there are many opportunities. Does your club have an event planned for World Polio Day on 24th October 2018!!!

- Movie night- The Freddie Mercury Story-Bohemian Rhapsody , contact your AG for details
- BBQ
- Shared Meal
- Polio Quiz

(Contact me for details E: mickel@slingshot.co.nz)

MICHAEL FAGG / District Polio Awareness Promotions