

**He aha ngā
tāke kōrero?**

**What's the
story? 2022**

**arts
access
aotearoa**
Putanga Toi ki Aotearoa

**Putanga Toi ki Aotearoa
Increasing access to the arts**



1.



2.



3.



1. A Q and A discussion between Caroline Bowditch, CEO, Arts Access Victoria and some of the *Meremere* team, including Rodney Bell, at Alter State, a festival of arts and disability in Melbourne Photo: Stace Robertson

2. Vikki Demant, Cultural Consultant at Auckland Prison, in the whakairo where [Read the story](#)

3. An artwork (detail) by a prisoner on permanent display in the Department of Corrections' refurbished national office, Mayfair House, in Wellington

Contents

Arts Access Aotearoa: a snapshot	Page 5
Investing in the arts for everyone in Aotearoa: Chair and Executive Director's report on 2022	Page 6
Our people in 2022	Page 10
Ngā Toi Rangatira o Aotearoa Arts Access Fellowships 2022	Page 12
Wāhi Auaha Creative Spaces Conference 2022: Igniting possibilities	Page 14
Funders and sponsors	Page 16
Te Arotake Performance Review 2022	Page 17
Supporting what we do	Page 38

Large print and online

Arts Access Aotearoa's *He aha ngā take kōrero? What's the Story? 2022* can be downloaded from artsaccess.org.nz/about-us

Large-print copies of the report are available online and on request.

Arts Access Aotearoa thanks all its stakeholders, funders and supporters for their contributions to its work in 2022.

Cover: Thora Hübner in *Where Our Shadows Meet*, devised by Equal Voices Arts and performed at Circa Theatre in February 2022 Photo: Michael Smith [For more about Equal Voices Arts](#)

Contact us

Level 3
Toi Pōneke Arts Centre
61–63 Abel Smith St
PO Box 9828
Wellington 6141
T: 04 802 4349
E: info@artsaccess.org.nz
W: www.artsaccess.org.nz

Facebook [/ArtsAccessAotearoa](#)
Twitter [@ArtsAccessNZ](#)
Instagram [@arts_access_aotearoa](#)

Design: Graphic Solutions Ltd



Auckland Prison's 2022 Battle of the Bands competition has quickly become a firm favourite on the prison's events calendar. [Read the story](#)

Arts Access Aotearoa: a snapshot

Arts Access Aotearoa | Putanga Toi ki Aotearoa works in partnership to increase access to the arts for people in Aotearoa who experience barriers to participation as artists, performers, writers, audience members, and gallery and museum visitors. We do this by working with people in the disabled, mental health and Deaf communities. We also work with the professional arts sector to improve access to Deaf and disabled artists and audiences.

Arts Access Aotearoa provides a national advisory and advocacy service about accessibility and inclusion in the arts. This includes providing information, resources and research through the Information Hub.

We advise Ara Poutama Aotearoa Department of Corrections on its arts programmes and activities, and advocate for the arts as a tool to support the rehabilitative process of prisoners and their reintegration back into the community on release.

Vision

All people in Aotearoa can access and participate in the arts.

Purpose

Arts Access Aotearoa works in partnership to increase access to the arts for people in Aotearoa who experience barriers to participation.

Values

Arts Access Aotearoa provides its service believing in these values:

- Accessibility and inclusion in the arts, respect and kindness in our undertakings for and with all people
- Arts Access Aotearoa recognises the importance of Te Tiriti o Waitangi to its kaupapa, with due regard for Te Tiriti's articles and principles.

This recognition is reflected in the following values that underpin its work:

- **Mōhiotanga** – seeking understanding and awareness
- **Rangatiratanga** – respecting the mana of others
- **Whanaungatanga** – appreciating the value of relationships and partnerships
- **Kotahitanga** – working in harmony to achieve common purpose and shared vision
- **Kaitiakitanga** – service to others and nurturing leadership within others.

Investing in the arts for everyone in Aotearoa

Chair and Executive Director's report on 2022

"If we're going to make a go of Aotearoa Inc in the bottom of the South Pacific, with all the problems that now confront us, all the friction of multiple cultures, of plural political perspectives, of a planet in deep trouble thanks to us, I believe the arts will be the torch that shines the way."

This powerful call was expressed by Justice Joe Williams at the opening of [Ngā Wāhi Auaha Creative Spaces Conference 2022](#) on 1 November. Justice Joe Williams – also a musician – spoke about the role of art in driving social change. He described the arts as a pill to invoke empathy and said that no community could survive without empathy. "It's the glue that binds us together."

Given the multiple social and economic benefits of the arts in Aotearoa New Zealand, it's essential that our artists, performers, filmmakers and writers receive adequate and sustained funding to make art that gives us hope; illuminates our past, present and future; challenges our thinking; inspires empathy – and, indeed, binds us together.

Funding for the arts comes from various sectors: central and local government, sponsorships, philanthropic trusts and gaming trusts. In these challenging economic times, the Government supported the arts sector with additional funding to Creative New Zealand and Manatū Taonga Ministry for Culture and Heritage.

Local councils are – and should be – key players in funding the diverse arts and cultural organisations that enhance their community's brand and attract visitors; foster the mental health and wellbeing of their citizens; and encourage social cohesion and optimism.

Investing in artists' practice

Acknowledging the impact of COVID-19 on the arts community over the past two years, Arts Access Aotearoa established [Ngā Toi Rangatira o Aotearoa Arts Access Fellowships 2022](#). The four fellowships, worth \$10,000 each, supported projects built around access, inclusion and participation in the arts.

We also saw the Fellowships as an investment in artists' practice, and something positive, practical and forward-looking.

Warm congratulations to the four outstanding recipients: Ari Kerssens, recipient of the Whakahoa Kaitoi Whanaketanga PAK'nSAVE Artist Fellowship; Salā Roseanne Leota, recipient of the Whakahoa Kaitoi i Te Ara Poutama Arts in Corrections Artist Fellowship; Magenta Creative Space, recipient of the Whakahoa Whakawatea Kaitoi Tangata Holdsworth Creative Spaces Fellowship; and Charlotte Nightingale, recipient of the Whakahoa Kaitoi Te Puna Toi Creative New Zealand Arts For All Fellowship.

Investing in creative spaces

In 2021, the Government through Manatū Taonga invested \$18 million over three years in the creative spaces sector. In 2022, all of the 54 creative spaces receiving the three-year funding experienced greater stability despite the challenges of COVID-19, the economy and environmental issues.

Across all 54 spaces, there was a 19% increase in employment. Other reported impacts included increased artist wellbeing, increased security for staffing with regular paid hours, increased access for participants and communities, new employment opportunities for artists and volunteers, and reduced cultural and social isolation among vulnerable communities.

Manatū Taonga funding also enabled Arts Access Aotearoa to establish a professional development programme to support the long-term capability of creative spaces throughout the country. This includes workshops, webinars, stories, resources, and a website dedicated to [Ngā Wāhi Whatunga Auaha Creative Spaces Network](#).

In 2022, the major focus of this programme was the online Ngā Wāhi Auaha Creative Spaces Conference 2022, held over 1 and 2 November. The theme of the conference was "Igniting possibilities" and delegates participated in presentations by international and local speakers; panel discussions; and peer-to-peer learning workshops. Feedback from delegates was extremely positive.

1.



2.



3.



4.



1. Justice Joe Williams, keynote speaker at the Wāhi Auaha Creative Spaces Conference 2022 [Watch his video presentation](#)
2. Stacey Robertson, Arts Access Aotearoa outside Arts Centre Melbourne during the Alter State festival Photo: Ash Spittal
3. Pauline Ward performs in *Confessions of a Sleepwalking Insomniac* with Nicola Clements as the NZSL interpreter. Written by Helen Vivienne Fletcher, who was commissioned by TAHI New Zealand Festival of Solo Performance, the play was performed as a work-in-development at BATS Theatre in Wellington Photo: Dianna Thomson
4. Lily Mae Ivatt Oakley, who plays the lead role in *Spark*, a digital, multisensory work by Charlotte Nightingale, Artistic Director of Glass Ceiling Arts Collective and recipient of the Whakahoia Kaitoi Te Puna Toi Creative New Zealand Arts For All Fellowship 2022

Access, inclusion and participation

Collectively, [Arts For All Network](#) members provided at least 220 accessible events and services in 2022. They also continued to develop their organisations' accessibility policies and action plans. This year, Arts Access Aotearoa worked with 32 member organisations on their policies and plans.

We have always stressed the importance of this policy work to embed accessibility across the whole organisation. We were pleased to work closely with Creative New Zealand, along with Deaf and disabled artists, arts leaders and disability-led organisations, through 2022 (and 2023) to support the development of Creative New Zealand's Accessibility Policy, to be released in late 2023.

In September, Access, Inclusion and Participation Advisor Stace Robertson travelled to Melbourne to attend the Alter State arts and disability festival, which showcased Touch Compass dancer and Artistic Direction Panel member Rodney Bell and his autobiographical work, *Meremere*, produced by Movement of the Human.

The visit was an opportunity to strengthen relationships with Victorian arts organisations such as Arts Access Victoria, Writers Victoria and the NGV, and learn more about their support for d/Deaf and disabled artists and audiences.

In his role advocating for accessibility to the arts, Stace also did a number of guest lectures at universities, and presentations to conferences and arts organisations.

1.



1.

Investing in d/Deaf and disabled artists

Arts Access Aotearoa supports and promotes opportunities for d/Deaf and disabled artists and writers to have sustainable careers in the arts. To this end, we continued to engage with d/Deaf and disabled artists and writers to establish a national network and accompanying website.

This year, we were pleased to work with two organisations providing opportunities for d/Deaf and disabled artists. Wellington writer, spoken-word poet and playwright Helen Vivienne Fletcher received a commission from TAHI: New Zealand Festival of Solo Performance to write a full-length solo play. The work-in-development was staged at BATS Theatre later in the year.

We also worked with Toi Pōneke Arts Centre, which selected Wellington writer and disability activist Robyn Hunt as the inaugural recipient of its 2022 residency. Robyn's project was to work on a collection of personal essays with a disability focus.

2.



1. The late Mel Smith CNZM, Arts Access Aotearoa's Founding Chair and Patron. We are indebted to Mel's service, support and encouragement [Read more about Mel Smith's contribution](#)
2. Auckland creative space Toi Ora Live Art Trust celebrates its artists at a party during Ngā Wāhi Auaha Creative Spaces Conference 2022
3. Lynley Hutton, Chair, Arts Access Aotearoa, and Richard Bengé, Executive Director, who was made a Member of the New Zealand Order of Merit for services to arts accessibility in May 2022

Investing in Arts in Corrections

Staff shortages, lockdowns and cuts to programming, including the arts, were a long-tail impact of COVID-19 on Corrections facilities in 2022. Amid the ongoing challenges, however, there was some light.

The announcement of the Whakahoa Kaitoi i Te Ara Poutama Arts in Corrections Artist Fellowship and our ongoing support for the recipient, [Salā Roseanne Leota](#), was the highlight of the 2022 Arts in Corrections calendar. With the support of her mentor, writer and performer Tusiata Avia, Roseanne is exploring ideas and opportunities that are feeding into her writing project.

Another [Arts in Corrections](#) highlight was the partnership between Manatū Taonga and Ara Poutama Aotearoa Department of Corrections, which resulted in the \$3 million Creative Arts and Cultural Wellbeing Prison Initiative. Artists and arts organisations applied for funding to deliver arts projects or programmes in prisons and 12 recipients were selected. By the end of 2022, contract negotiations were still under way but we expect the initiative will result in a significant increase in high-quality and strategic arts activity across prisons in Aotearoa.

We continue to advocate for a national framework or strategy to deliver arts programmes across all 18 prisons and it is pleasing that the Department of Corrections has allocated a policy advisor to oversee and progress this work.

There are several clear benefits to developing an overarching, national framework. These include supporting the Department's Hōkai Rangī Strategy; achieving consistent, culturally relevant arts participation; and enabling us to provide more effective data and measure the impact of these arts programmes.

3.



Funding and finances

Arts Access Aotearoa's activities across the country would not be possible without the grants, donations and in-kind support we receive. We are grateful for this support, along with vital core funding from Creative New Zealand, contracts with Ara Poutama Aotearoa and Manatū Taonga, and significant grants from Foundation North, Auckland Council and Wellington City Council.

Careful financial management has meant we have made a surplus, which improves our financial health and sustainability.

Our people in 2022

With great sadness we learned that on 28 May 2022, Arts Access Aotearoa's Founding Chair and Patron, Mel Smith CNZM, died. We are indebted to Mel's outstanding service, support and encouragement of our organisation.

Richard Bengé said in tribute: "Mel's kind, insightful words of encouragement will not be lost as we carry on, sad as we are to have lost our friend, but grateful that we ever had the good fortune to be supported by such an esteemed gentleman." Kei te pouri matou engari kei te tino mihi.

This year, the pandemic continued to challenge Arts Access Aotearoa and its stakeholders to do things differently. Our sincere thanks to Arts Access Aotearoa staff for their commitment, skills, and ability to pivot and adapt.

Thank you also to our Kaumātua, Bill Kaua, and Dame Rosie Horton, our trustees and volunteers. In particular, we said farewell and thank you to trustees Olivier Lacoua and Ruth Smithers, who retired from the Board in 2022.

Heading into 2023, let's all continue to work together, advocating for the role of the arts to evoke empathy, bind us together and shine the way – at the same time ensuring central and local government understand the importance of investing in the artists and arts organisations of Aotearoa so all people can have access to the life-giving force of the arts.


Lynley Hutton

Trust Chair |Toihau
Kaiwhakahaere Matua

26 May 2023


Richard Bengé MNZM

Executive Director I

26 May 2023

Our people in 2022

as at 31 December 2022

1.



Kaumātua

The Venerable Wiremu (Bill)
Kaua ONZM

Ngāti Porou, Ngāti
Kahungunu, Ngāti Horowai,
Rongowhakaata, Rakaipaaka,
Te Aitanga a Hauiti

Patron

Miranda Harcourt ONZM

Patron, Arts Access Accolade

Dame Rosemary Horton
DNZM, QSO, QSM

Trustees

Lynley Hutton – Chair
from August 2021, joined
board in November 2017

Jo Burrell – joined board
in May 2021

Olivier Lacoua – joined
board in July 2019,
retired in May 2022

**Te Aturangi Nepia-
Clamp** – joined board in
August 2017

Stew Sexton – joined
board in February 2017

Ruth Smithers – joined
board in February 2018,
retired in January 2022

Paige Sullivan, joined
board April 2021 as a
youth member and as a
trustee in February 2022

Frances Turner – joined
board in April 2021

Staff

Richard Benge MNZM,
Executive Director |
Kaiwhakahaere Matua

Kezia Bennett,
Communications Assistant |
Kaiawhina Whakawhitiwhiti
Kōrero

Hannah Dahlke, Creative
Spaces Funding Advisor |
Kaiārahi Kohi Moni

Dawa Devereux, Business
Administrator | Kaipakihi

Airini Gordon,
Administration and Projects
Assistant | Kaiawhina
Whakahaere a Mahi

Milly Hampton, Advisory
Programmes Assistant |
Kaiawhina Whakahaere
Mahi

Kate Hiatt, Creative
Spaces Advisor | Kaiārahi a
Toi Whakawātea Tangata

Sam Morgan, Digital
Content Developer |
Kaiwhakawhanake Ihirangi
Mamati

Iona McNaughton,
Communications
Manager | Kaiwhakahaere
Whakawhitiwhiti Kōrero

Stace Robertson, Access,
Inclusion and Participation
Advisor | Kaiārahi a Toi

Dev Singh, Finance
Manager | Kaiwhakahaere
Putea

Chris Ulutupu, Arts in
Corrections Advisor |
Kaiārahi a Toi Ara Poutama

Neil Wallace, Creative
Spaces Funding Advisor |
Kaiārahi Kohi Moni

Volunteers

Thanks to all the volunteers,
who did so much to support
Arts Access Aotearoa and
its work in 2022.

2.



3.



4.



5.



6.



1. Arts Access Aotearoa's Kaumātua, Bill Kaua ONZM, with Patron of the Arts Access Accolade, Dame Rosie Horton DNZM, QSO, QSM

2. Hannah Dahlke, Arts Access Aotearoa, with Simon Gray, Arts Tutor at The White Room Creative Space in Ōtautahi Christchurch

3. Richard Benge and Kate Hiatt, Arts Access Aotearoa, meet with Jolt staff and dancers after a performance of *Seasons*, a collaboration between Jolt and the Christchurch Symphony Orchestra Photo: Helen Oakes

4. Milly Hampton and Chris Ulutupu, Arts Access Aotearoa meet with Auckland crochet artists Lissy and Rudi Robinson-Cole [Read more about Lissy and Rudi](#)

5. Richard Benge and Lynley Hutton, Arts Access Aotearoa, outside the Beehive to attend the launch of Whaikaha Ministry of Disabled People in July 2022

6. Susanne Ritzenhoff, Director of Toi Ora Live Art Trust, and Frances Turner, a trustee for Toi Ora and also Arts Access Aotearoa, at a party held during Ngā Wāhi Auaha Creative Spaces Conference 2022

Ngā Toi Rangatira o Aotearoa Arts Access Fellowships 2022

Artists, a creative space and projects built around access, inclusion and participation in the arts were the inaugural recipients of Ngā Toi Rangatira o Aotearoa Arts Access Fellowships, announced in November 2022.

[For more information about the recipients and their projects](#)

“The fellowship has been a great opportunity for me and I’m so grateful. It’s accelerated creative possibilities for me, and I’ve been given the space and freedom to truly explore where I am, who I am and where I could go. I can’t thank Arts Access Aotearoa enough and am looking forward to my final presentation.”

– Salā Roseanne Leota, Whakahoa Kaitoi i Te Ara Poutama Arts in Corrections Artist Fellowship

“The fellowship has enabled me to focus on testing and developing the multisensory storyscape for Spark with members of our community with PMLD (Profound and Multiple Learning Disabilities). It’s made me realise how important it is to have our audience front and centre when developing art, particularly for the PMLD community where meaningful and accessible arts experiences are few.”

– Charlotte Nightingale, Whakahoa Kaitoi Te Puna Toi Creative New Zealand Arts For All Fellowship

“The opportunity to collaborate on a project I’m passionate about, with a friend whose art I admire deeply, and do so at a scale enabled by these funds has been incredible. Tash and I are looking forward to the exploring and learning that will come as we move from recording to editing and mixing our sound art piece.”

– Ari Kerssens, Whakahoa Kaitoi Whanaketanga PAK’nSAVE Artist Fellowship

“A powerful outcome of this fellowship is the way it’s uplifting members of our community and giving them a voice. Access to these kinds of opportunities has been limited for Samara, our artist leading the programme. She has embraced the mentoring aspect and is now using her new skills to deliver a meaningful te ao Māori youth programme.”

– Maria Anderson, Outreach Co-ordinator, Magenta Creative Space, Whakahoa Whakawatea Kaitoi Tangata Holdsworth Creative Spaces Fellowship

1.



2.



3.



4.



1. Samara Davis, right, an art tutor and artist at Magenta Creative Space, is leading its Youth Programme, which includes a project that will culminate in an exhibition of work by the young artists

2. Salā Roseanne Leota is exploring and researching the development of her creative writing processes and abilities, with the support of a mentor, writer and performer Tusiata Avia

3. Ari Kerssens is collaborating with sound artist Tash van Schaardenburg on a series of audio recordings, exploring Ari's blind experience of navigating acoustically distinct environments in Tāmaki Makaurau using a cane

4. Charlotte Nightingale is working with the PMLD (Profound and Multiple Learning Disabilities) community to create *Spark*, a multisensory theatre work for audiences with PMLD. The work will be produced and presented by Glass Ceiling Arts Collective, which Charlotte co-founded in 2020

Igniting possibilities

The theme of Ngā Wāhi Auaha Creative Spaces Conference 2022, an online conference organised by Arts Access Aotearoa in November, was “Igniting possibilities”. It celebrated everything creative spaces make possible, including support for artists to fulfil their creative potential; a sense of belonging; and improved mental health and wellbeing.

The conference was a key professional development forum, with keynote speakers, panel discussions and peer-to-peer learning presentations.

[For more information and video presentations of the conference](#)

Evaluation and feedback from conference delegates was extremely positive.

“The conference was a great opportunity to connect. Thank you for the work that went into making it all happen.”

“Everything I saw was very valuable and informative. Some of the speakers were very inspirational too! Thank you.”

“A mighty BIG thanks to the Arts Access team. I really enjoyed the presentations I attended and look forward to seeing those I missed when they go online. A great resource for the community to have on tap for the next few years.”

“There were heaps of practical takeaways, and I also loved the videos and dance activations peppered throughout!”

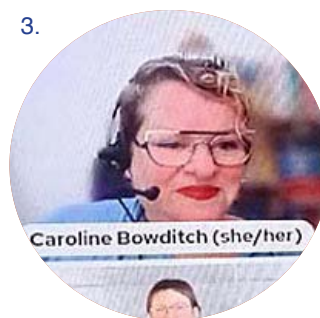
“Holding the conference online vastly increased accessibility and ensured that many more people got to enjoy the content than would have if it was in-person.”



2.



3.



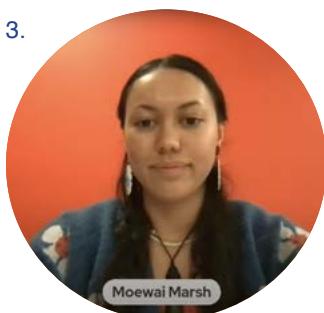
3.



4.



3.



5.



1. Cultural Connections, a creative space in Nelson, get together after watching the online Ngā Wāhi Auaha Creative Spaces Conference 2022

2. Master weaver Moana Harrison and Jo Kaaho weaving a tukutuku work, which has become an integral part of the Creative Spaces Network branding. It was made collectively by the people of Te Mana Tangata, a programme led by Moana in Coromandel Town for Artists in the Making. [Read about the tukutuku work](#)

3. Caroline Bowditch, Erin Gough and Moewai Marsh, conference presenters

4. Thomas Hinz, Creative Director of Circability, and its circus performers at the Toi Ora conference party

5. Arts Access Aotearoa hosts a conference party with Wellington region creative spaces

Funders and sponsors

Arts Access Aotearoa thanks the following organisations that have supported its work in increasing access to the arts in 2022. We look forward to your ongoing support.

[Visit our Funders and supporters' webpage](#)

Core funder



Major contracts



Local government grants



Legal services



Grants



Winton and Margaret Bear Charitable Trust

Ngā Toi Rangatira o Aotearoa Arts Access Fellowships 2022 sponsors



Supporters

Thank you to the generous Friends of Arts Access Aotearoa whose regular donations supported the activities in this report. Thanks also to Rajeev Mishra, Toi Pōneke, TSB Showplace, MTG Hawke's Bay Museum, Auckland Live, Canterbury Museum, Otago Museum, two/fiftyseven limited and Creative Bay of Plenty. Thanks also to our strategic partner Fraser Carson and Flightdec; Craig Christensen and Graphic Solutions; Marty Brooky and Coherent; Base IT; and Volunteer Wellington.

Te Arotake

Performance Review 2022

arts
access
aotearoa
Putanga Toi ki Aotearoa

Jolt and Christchurch Symphony
Orchestra collaborated in *Seasons*,
presented and toured by Chamber Music
New Zealand Photo: Helen Oakes



Entity information

For the year ended 31 December 2022

Legal name of entity: Arts Access Aotearoa Whakahauihou
Katoa o Hanga Charitable Trust

Other name of entity (if any): Arts Access Aotearoa

Type of entity and legal basis (if any): Charitable trust

Registration number: CC 33533

Registration date: 30 June 2008

Entity's purpose or mission: All people in New Zealand are able to participate in the arts

Entity structure: Trust governed by board of trustees

Main sources of the entity's cash and resources:
Grants, fundraising and donations

Main methods used by the entity to raise funds:
Application for grants from Government, local bodies, charities and gaming organisations

Entity's reliance on volunteers and donated goods or services: Low level of volunteers

Hon Carmel Sepuloni, Minister for Arts, Culture and Heritage, at the launch of Whaikaha Ministry of Disabled People



Statement of service performance

For the year ended 31 December 2022

Output	Measure	2022		2021
		Actual	Target	Actual
STRATEGIC AREA #1: The arts are accessible to Deaf and disabled people				
Support arts organisations to become accessible	The number of Arts For All Network meetings held regionally in-person and virtually via Zoom	Facilitated eight Network meetings in 2022 (seven regional in-person and one national, online)	Facilitate nine Network meetings in 2022 (seven in-person and two online)	Facilitated ten Network meetings in 2021
	The number of accessible services, performances and other events provided by Arts For All Network members	220 accessible services, performances and other events provided by Arts For All Network members	Arts For All Network members provide 182 accessible services, performances and other events	182 accessible services, performances and other events provided by Arts For All Network members
	The number of Arts For All Network members consulted on developing their accessibility policies/plans	Consulted with 32 Arts For All Network members on developing their accessibility policies/plans	Consult with 19 Arts For All Network members on developing their accessibility policies/plans	Consulted with 19 Arts For All Network members on developing their accessibility policies/plans
Advocate to, partner with, and influence art organisations, policymakers and funders, with the aim of improving funding, processes and standards for accessibility	The number of advocacy opportunities contributed to supporting improved funding, processes and standards for accessibility	Contributed to three advocacy opportunities that supported improved funding, processes and standards for accessibility	Contribute to at least one project, submission, survey or advocacy opportunity that supports improved funding, processes and standards for accessibility	N/A

Output	Measure	2022		2021
		Actual	Target	Actual
STRATEGIC AREA #2: The arts are accessible in the community				
Support creative spaces to build networks that encourage collaboration and raise the profile of the sector	Deliver three pānui to the national Creative Spaces Network	Three pānui distributed (in April, August, December)	Distribute three pānui to the national Creative Spaces Network	Four pānui distributed (in February, August, November, December)
Support creative spaces with their capability building and professional development	A national creative spaces conference/ wānanga is delivered	Delivered one creative spaces conference, Ngā Wāhi Auaha, in November 2022	Deliver one creative spaces conference/ wānanga	N/A
	A targeted professional development training programme for creative spaces is delivered.	Designed and launched an ongoing professional development training programme for creative spaces	Deliver a targeted professional development training programme for creative spaces	N/A
Auckland Sector Needs: Deliver the Empowering the Auckland Creative Spaces Sector project	Deliver: Empowering the Auckland Creative Spaces Sector project. Implement strategic plan developed in 2020	Two regional network meetings were held. Ongoing: Manatū Taonga CARE Fund delivered to Strategic Priority 2: Sustainable funding Ongoing: Manatū Taonga professional development funding delivered to Strategic Priority 3: Strengthened capability	Deliver to the Empowering Auckland Strategic Plan 2021–2023 Three regional network meetings (in-person or virtual)	Manatū Taonga CARE Fund delivered to Strategic Priority 2: Sustainable funding Successful recruitment for new Auckland-based contractor for Creative Spaces Advisor – Auckland role

Output	Measure	2022		2021
		Actual	Target	Actual
STRATEGIC AREA #3: The arts are accessible in justice settings				
Support Ara Poutama Aotearoa by advising on the supply and delivery of arts initiatives in Corrections	Summary of advisory support and advice provided; summary of consultations with arts organisations and artists	119 consultations with arts organisations and artists, and advisory support and advice provided	122 consultations with arts organisations and artists, and advisory support and advice provided	122 consultations with arts organisations and artists, and advisory support and advice provided
	The number of Arts in Corrections Network meetings delivered	Four Arts in Corrections Network meetings delivered (three in-person, one online)	Facilitate three Arts in Corrections Network meetings	Four Arts in Corrections Network meetings delivered (two in-person, two online)

Stace Robertson, Access, Inclusion and Participation Advisor, Arts Access Aotearoa, right, at an Arts For All Otago Network hui in 2022
[For more information about the Arts For All Network](#)



Statement of financial performance

For the year ended 31 December 2022

	Note	Actual	Budget	Actual
		This year \$	This year \$	Last year \$
Revenue				
Funding from central or local government	1	1,150,076	945,770	1,140,266
Revenue from non govt sources for providing goods and services	1	10,000	10,000	10,000
Donations, fundraising and other similar revenue	1	104,342	113,204	110,110
Interest, dividends and other similar revenue	1	17,359	4,914	4,830
Other revenue	1	1,487	5,000	5,041
Total revenue		1,283,264	1,078,888	1,270,247
Expenses				
Expenses related to public fundraising	2	14,296	17,362	20,346
Volunteer and employee-related costs	2	757,701	745,681	729,618
Costs related to providing goods or services	2	270,253	270,210	333,039
Other expenses	2	25,278	38,093	27,150
Total expenses		1,067,528	1,071,346	1,110,153
Surplus for the year		215,736	7,542	160,094
Total non-operating and extraordinary Items		-	-	(3,231)
Surplus for the year after non-operating		215,736	7,542	156,863

*The notes, policies and Auditor's Report are integral to these financial statements.

Statement of financial position

As at 31 December 2022

	Note	Actual	Actual
		This year	Last year
		\$	\$
Assets			
Current assets			
Bank accounts and cash	3	1,158,968	588,994
Debtors and prepayments	3	89,775	3,921
Total current assets		1,248,743	592,915
Non-current assets			
Property, plant and equipment	4	9,295	5,533
Total non-current assets		9,295	5,533
Total assets		1,258,038	598,448
Liabilities			
Current liabilities			
Creditors and accrued expenses	3	27,691	20,076
Employee costs payable	3	90,437	58,861
Unused donations and grants with conditions	3	553,784	149,121
Total current liabilities		671,912	228,058
Non-current liabilities			
Total non-current liabilities		-	-
Total liabilities		671,912	228,058
Total assets less total liabilities (net assets)		586,126	370,390
Accumulated funds			
Trustee/member accumulated equity	5	473,312	257,576
Investment reserve	5	12,814	12,814
Restricted/discretionary reserve funds	5	100,000	100,000
Total accumulated funds		586,126	370,390

Adopted as true and correct by the governance board on 22 April 2023



Lynley Hutton, Chair 22 April 2023



Richard Bengel, Executive Director 22 April 2023

*The notes, policies and Auditor's Report are integral to these financial statements.

Statement of cash flows

For the year ended 31 December 2022

	Actual	Actual
	This year \$	Last year \$
Cash flows from operating activities		
Cash was received from:		
Donations, fundraising and other similar receipts	3,552	3,079
Funding from central or local government*	1,337,866	1,178,647
Receipts from non-governmental sources for providing goods or services*	90,000	99,575
Interest, dividends and other investment receipts	9,965	3,093
Fundraising revenue	6,060	16,200
Other revenue	157,564	7,214
Net GST	197,753	101,677
Cash was applied to:		
Payments to suppliers and employees	1,233,791	1,253,545
Net cash flows from operating activities	568,969	155,940
Cash was applied to:		
Payments to acquire property, plant and equipment	6,982	4,916
Net cash flows from investing and financing activities	(6,982)	(4,916)
Net increase/(decrease) in cash	561,987	151,024
Opening bank and Mastercard balance	583,372	432,348
Closing bank and Mastercard balance	1,145,359	583,372
This is represented by:		
Bank accounts and Mastercard account	1,145,359	583,372

*The notes, policies and Auditor's Report are integral to these financial statements.

Statement of accounting policies

For the year ended 31 December 2022

Basis of preparation

Arts Access Aotearoa has elected to apply PBE SFR-A (NFP) Public Benefit Entity Simple Format Reporting - Accrual (Not-For-Profit) on the basis that it does not have public accountability and has total annual expenses of equal to or less than \$2,000,000. All transactions in the Performance Report are reported using the accrual basis of accounting. The Performance Report is prepared under the assumption that the entity will continue to operate in the foreseeable future.

Goods and Services Tax (GST)

All amounts are recorded exclusive of GST, except for Debtors and Creditors, which are stated inclusive of GST.

Income tax

Arts Access Aotearoa is wholly exempt from New Zealand income tax, having fully complied with all statutory conditions for these exemptions.

Bank accounts and cash

Bank accounts and cash in the Statement of Cash Flows comprise cash balances and bank balances (including short-term deposits) with original maturities of 90 days or less.

Changes in accounting policies

There have been no changes in accounting policies during the financial year (last year - nil)

Fixed assets

Fixed assets, other than land, are recorded at cost less accumulated depreciation.

Depreciation

Depreciation has been calculated on a straight-line basis over the estimated useful life of the assets.

Debtors

Debtors have been recorded at their net realisable value.

Revenue recognition

Income is recognised when invoiced or receipted except where income is received in advance. "Income in advance" is stated as a current liability where the funds have not yet been expended, according to the authorised purpose, and those funds would be required to be repaid to the funder.

Income tax exemption

Sections CW41 & 42 of the Income Tax Act 2007 exempt income tax on an organisation registered with the Charities Commission and applying income to its charitable purposes. The Trust has income tax exemption and charitable status through its registration with the Charities Commission on the 30 June 2008 (CC 33533).

*The notes, policies and Auditor's Report are integral to these financial statements.

Notes to the performance report

For the year ended 31 December 2022

Note 1: Analysis of revenue

		Actual	Budget	Actual
Revenue Item	Analysis	This year \$	This year \$	Last year \$
Funding from central or local government	Creative New Zealand – core	470,000	470,028	460,000
	Department of Corrections	215,000	210,000	182,500
	Wellington City Council	25,853	25,538	25,279
	Creative New Zealand – Arts Access Awards/Fellowships	10,000	5,000	10,000
	Oranga Tamariki	-	-	135,743
	Ministry for Culture and Heritage	210,208	210,204	230,208
	Ministry for Culture and Heritage – professional development fund	200,000	-	-
	Creative New Zealand – Oranga Tamariki	-	-	96,536
	Ministry of Social Development	19,015	-	-
	Auckland Council	-	25,000	-
	Total		1,150,076	945,770
		Actual	Budget	Actual
Revenue item	Analysis	This year \$	This year \$	Last year \$
Sources for providing Goods and Services	Wellington Community Fund	10,000	10,000	10,000
	Total	10,000	10,000	10,000
		Actual	Budget	Actual
Revenue item	Analysis	This year \$	This year \$	Last year \$
Donations, fundraising and other similar revenue	Foundation North Trust	80,000	79,992	70,492
	Thomas George Macarthy Trust	-	5,000	5,000
	Other donations	4,612	3,482	4,279
	Sponsorships of Arts Access Awards	10,000	15,000	15,000
	In-kind-donations of Goods and Services	9,730	9,730	15,339
	Total		104,342	113,204

		Actual	Budget	Actual
Revenue item	Analysis	This year \$	This year \$	Last year \$
Interest, dividends and other investment revenue	Westpac Bank interest	17,359	4,914	4,830
	Total	17,359	4,914	4,830
		Actual	Budget	Actual
Revenue item	Analysis	This year \$	This year \$	Last year \$
Other revenue	Miscellaneous revenue	1,487	5,000	5,041
	Total	1,487	5,000	5,041

*The notes, policies and Auditor's Report are integral to these financial statements.

Dr Esther Woodbury chairs a Crip the Lit panel discussion at the Verb Readers and Writers Festival 2022 in Wellington, with panelists Erin Donohue, Robyn Hunt and Alice Mander. The NZSL interpreter at right is Rachel Tate



Note 2: Analysis of expenses

		Actual	Budget	Actual
Expense item	Analysis	This year \$	This year \$	Last year \$
Expenses related to public fundraising	Travel	148	6,342	177
	Marketing and promotions	7,041	3,520	12,682
	Fundraising and sponsorship	7,107	7,500	7,487
	Total	14,296	17,362	20,346
		Actual	Budget	Actual
Expense Item	Analysis	This year \$	This year \$	Last year \$
Volunteer and employee-related costs	Salaries and wages	713,973	707,574	701,785
	Professional development	6,606	6,000	6,022
	Kiwisaver contributions	28,557	28,557	18,334
	ACC levies	1,438	1,400	1,382
	Health and safety	4,510	750	695
	Payroll fees	1,015	900	898
	Recruitment	1,602	500	502
Total	757,701	745,681	729,618	
		Actual	Budget	Actual
Expense Item	Analysis	This year \$	This year \$	Last year \$
Costs related to providing Goods and Services	Administration and overhead costs	24,558	26,000	22,204
	Projects	200,566	183,699	266,186
	Trustees' expenses	11,289	20,000	17,108
	Premises	33,840	40,511	27,541
	Total	270,253	270,210	333,039

		Actual	Budget	Actual
Expense Item	Analysis	This year \$	This year \$	Last year \$
Other expenses	General expenses	11,859	22,810	8,537
	Depreciation	3,829	3,503	3,500
	Volunteer programme	6,682	7,280	11,906
	Audit	2,908	4,500	3,207
	Total	25,278	38,093	27,150

*The notes, policies, and Auditor's Report are integral to these financial statements.

White Room Creative Space artist-on-wheels Isaac Tait takes art to the streets of Ōtautahi Christchurch



Note 3: Analysis of assets and liabilities

		Actual	Actual
Asset Item	Analysis	This year \$	Last year \$
Bank accounts and cash	Current account	443,166	230,737
	Saver account	3,376	3,355
	Petty cash	528	398
	Term investments	711,898	354,504
	Total	1,158,968	588,994
		Actual	Actual
Asset item	Analysis	This year \$	Last year \$
Debtors and prepayments	Debtors	89,775	-
	Prepayments	-	3,921
	Total	89,775	3,921
		Actual	Actual
Liability item	Analysis	This year \$	Last year \$
Creditors and accrued expenses	Accounts payable	1,611	3,516
	Westpac Mastercard	1,183	720
	Audit fees accrual	3,200	3,500
	GST due	21,697	12,340
	Total	27,691	20,076

		Actual	Actual
Liability item	Analysis	This year \$	Last year \$
Employee costs payable	MD salary allowance accrued	10,000	10,000
	Leave balance accrued	50,316	36,782
	PAYE accrued	16,304	-
	Salary accrued	13,817	12,079
	Total	90,437	58,861
		Actual	Actual
		This year \$	Last year \$
Unused donations and grants with conditions	Wellington City Council	13,080	12,773
	Foundation North	16,272	26,667
	Oranga Tamariki	53,593	53,593
	Grace Memorial Trust	20,425	20,425
	Auckland Council	25,000	25,000
	Creative New Zealand	3,114	3,114
	Targeted support creative spaces	260,000	-
	Sub total	391,484	141,572
	Crip the Lit funds	245	301
Funds held in trust	Project WHA	300	300
	Winton & Margaret Bear	5,478	6,548
	Audio description bond	200	400
	Equal Voices Arts Trust	156,077	-
	Sub total	162,300	7,549
	Total	553,784	149,121

*The notes, policies, and Auditor's Report are integral to these financial statements

Note 4: Fixed assets

This year					
Asset class	Opening carrying amount*	Purchases	Sales/ disposals	Current year Depreciation and Impairment*	Closing carrying amount*
Furniture and Fixtures	3,494	2,844	-	1,239	5,099
Office Equipment	828	4,747	-	2,591	2,985
Computers (including software)	1,211	-	-	-	1,211
Total	5,533	7,591	-	3,829	9,295

Last year					
Asset class	Opening carrying amount*	Purchases	Sales/ disposals	Current year depreciation and impairment*	Closing carrying amount*
Furniture and Fixtures	2,533	2,885	1,000	924	3,494
Office Equipment	828	-	-	-	828
Computers (including software)	756	2,031	-	1,576	1,211
Total	4,117	4,916	1,000	2,500	5,533

*The notes, policies, and Auditor's Report are integral to these financial statements

Note 5: Accumulated funds

This year				
Description	Accumulated surpluses or deficits*	Investment reserve	Equity funds reserves - restricted/ discretionary	Total*
Opening balance	257,576	12,814	100,000	370,390
Surplus/(deficit) for the year from operations	215,736	-	-	215,736
Closing balance	473,312	12,814	100,000	586,126
Last year				
Description	Accumulated surpluses or deficits*	Investment reserve	Equity funds reserves - restricted/ discretionary	Total*
Opening balance	100,713	12,814	100,000	213,527
Surplus/(deficit) for the year from operations	160,094	-	-	160,094
Total non-operating and extraordinary Items	(3,231)	-	-	(3,231)
Closing balance	257,576	12,814	100,000	370,390

Note 6: Commitments and contingencies

		At balance date	At balance date
		This year	Last year
		\$	\$
Commitment	Explanation and timing		
Commitments to lease or rent assets	Arts Access Aotearoa has a monthly lease on the premises at 63 Abel Smith Street from which it operates. Rent is paid monthly, two weeks in advance and two weeks in arrears. At least three months' notice is required for termination of the lease.	22,607	22,607
Guarantees provided	No guarantees have been provided to any person or organisation.		

Note 7: Other**Unused donations and grants with conditions**

Description	Original amount	Not fulfilled amount	Purpose and nature of the condition(s)
Ministry for Culture and Heritage	460,000	260,000	Plan and implement creative spaces network building, conference, professional development, focused on sustainability.
Wellington City Council	26,160	13,080	Support creative spaces in Wellington City and advocate for greater access to the arts in Wellington. In partnership with City Arts, provide workshops, training and support to the Arts For All Network.
Oranga Tamariki	216,928	53,593	AAA to work with Oranga Tamariki's children to engage with artistic activities. AAA to provide dedicated Arts Advisor for duration of contract.
Grace Memorial Trust Fund	25,000	20,425	AAA to apply funds to two projects - To engage community-based artists to provide arts skills/therapy in Youth Justice facilities and for prisoners with visual arts for rehabilitation.
Foundation North	69,605	16,272	Funds received for Empowering Auckland Creative Spaces project yet to be used.
Auckland City Council	25,000	25,000	Funds received from Auckland Council for Auckland creative services project.
Creative NZ- Oranga Tamariki Artists	99,650	3,114	Funds received from Creative New Zealand for funding of artists in the Oranga Tamariki project.
Funds held in trust			
Description*	Original amount*	Unfilled Amount	Derivation of the fund
Winton & Margaret Bear	9,788	5,478	Funding for Winton & Margaret scholarships granted
Equal Voices Arts Trust	171,450	156,077	Funds held on behalf of Equal Voices Arts Trust

Assets used as security for liabilities**Nature and amount of borrowing**

None noted

Note 8: Assets held on behalf of others

None noted.

Note 9: Related party disclosures

There were no transactions involving related parties during the financial year. (Last year – Nil)

Note 10: Events after the balance date

There were no events that have occurred after the balance date that would have a material impact on the Performance Report. (Last year – Nil)

Note 11: Ability to continue operating

The governance has considered the going concern principle and believes to the best of its knowledge that the organisation has resources to continue operating for the foreseeable future.

Note 12: Correction of errors

The governance is not aware of any material errors requiring correction in the financial statements.

Note 13: Comparatives

Last year's comparative amounts have been prepared on the same basis as this year's amounts.

INDEPENDENT AUDITOR'S REPORT

To TRUSTEES of ARTS ACCESS AOTEAROA WHAKAHAUHAU KATOA O HANGA CHARITABLE TRUST

Report on the Performance Report

Opinion

We have audited the performance report of ARTS ACCESS AOTEAROA WHAKAHAUHAU KATOA O HANGA CHARITABLE TRUST ("ARTS ACCESS AOTEAROA") on pages 2 to 18, which comprise the entity information and statement of service performance, the statement of financial position as at 31 December 2022, the statement of financial performance, statement of cash flows for the year ended, the statement of accounting policies and other explanatory information.

In our opinion:

- a) the reported outcomes and outputs, and quantification of the outputs to the extent practicable, in the statement of service performance are suitable;
- b) the performance report on pages 2 to 18 presents fairly, in all material respects:
 - the financial position of ARTS ACCESS AOTEAROA as at 31 December 2022 and of its financial performance and cash flows;
 - the entity information and the service performance, for the year ended, in accordance with Public Benefit Entity Simple Format Reporting – Accrual (Not-For-Profit) [PBE-SFR-A-NFP] issued in New Zealand (NZ) by the NZ Accounting Standards Board.

Basis for Opinion

We conducted our audit of the statement of financial performance, statement of financial position, statement of cash flows, statement of accounting policies and notes to the performance report in accordance with International Standards on Auditing (NZ), and the audit of the entity information and statement of service performance in accordance with the International Standard on Assurance Engagements (NZ) ISAE (NZ) 3000 (Revised). Our responsibilities under those standards are further described in the *Auditor's Responsibilities for the Audit of the Performance Report* section of our report. We are independent of ARTS ACCESS AOTEAROA in accordance with Professional and Ethical Standard 1 (Revised) *Code of Ethics for Assurance Practitioners* issued by the NZ Auditing and Assurance Standards Board, and we have fulfilled our other ethical responsibilities in accordance with these requirements. We believe that the audit evidence we have obtained is sufficient and appropriate to provide a basis for our audit opinion. Other than in our capacity as auditor we have no relationship with, or interests in, ARTS ACCESS AOTEAROA.

Trustees' Responsibility for the Performance Report

The trustees are responsible for:

- a) identifying outcomes and outputs, and quantifying the outputs to the extent practicable, that are relevant, reliable, comparable and understandable, to report in the statement of service performance;
- b) the preparation and fair presentation of the performance report which comprises:
 - the entity information, the statement of service performance; and
 - the statement of financial performance, statement of financial position, statement of cash flows, statement of accounting policies and notes to the performance report in accordance with PBE-SFR-A-NFP issued in NZ by the NZ Accounting Standards Board, and
- (c) for such internal control as the governance determines is necessary to enable the preparation of a performance report that is free from material misstatement, whether due to fraud or error.

In preparing the performance report, the trustees are responsible for assessing the entity's ability to continue as a going concern, disclosing, as applicable, matters related to going concern and using the going concern basis of accounting unless the trustees either intends to liquidate the entity or to cease operations, or have no realistic alternative but to do so.

Auditor's Responsibilities for the Audit of the Performance Report

Our objectives are to obtain reasonable assurance about whether the performance report is free from material misstatement, whether due to fraud or error, and to issue an auditor's report that includes our opinion. Reasonable assurance is a high level of assurance but is not a guarantee that an audit conducted in accordance with ISAs (NZ) and ISAE (NZ) 3000 (Revised) will not always detect a material misstatement when it exists. Misstatements can arise from fraud or error and are considered material if, individually or in the aggregate, they could reasonably be expected to influence the economic decisions of users taken on the basis of this performance report. As part of an audit in accordance with ISAs (NZ) and ISAE (NZ) 3000 (Revised), we exercise professional judgement and maintain professional skepticism throughout the audit. We also:

- Identify and assess the risks of material misstatement of the performance report, whether due to fraud or error, design and perform audit procedures responsive to those risks, and obtain audit evidence that is sufficient and appropriate to provide a basis for our opinion. The risk of not detecting a material misstatement resulting from fraud is higher than for one resulting from error, as fraud may involve collusion, forgery, intentional omissions, misrepresentations, or the override of internal control.
- Obtain an understanding of internal control relevant to the audit in order to design audit procedures that are appropriate in the circumstances, but not for the purpose of expressing an opinion on the effectiveness of the entity's internal control.
- Evaluate the appropriateness of accounting policies used and the reasonableness of accounting estimates and related disclosures made by management.
- Conclude on the appropriateness of the use of the going concern basis of accounting by the governance and, based on the audit evidence obtained, whether a material uncertainty exists related to events or conditions that may cast significant doubt on the entity's ability to continue as a going concern. If we conclude that a material uncertainty exists, we are required to draw attention in our auditor's report to the related disclosures in the performance report or, if such disclosures are inadequate, to modify our opinion. Our conclusions are based on the audit evidence obtained up to the date of our auditor's report. However, future events or conditions may cause the entity to cease to continue as a going concern.
- Evaluate the overall presentation, structure and content of the performance report, including the disclosures, and whether the performance report represents the underlying transactions and events in a manner that achieves fair presentation.
- Perform procedures to obtain evidence about and evaluate whether the reported outcomes and outputs, and quantification of the outputs to the extent practicable, are relevant, reliable, comparable and understandable.

We communicate with the trustees regarding, among other matters, the planned scope and timing of the audit and significant audit findings, including any significant deficiencies in internal control that we identify during our audit.

Restriction on responsibility

This report is made solely to the trustees, as a body. Our audit work has been undertaken so that we might state to the trustees those matters we are required to state to them in an auditor's report and for no other purpose. To the fullest extent permitted by law, we do not accept or assume responsibility to anyone other than the trustees as a body, for our audit work, for this report, or for the opinions we have formed.

AUDIT INTEGRITY

Integrity Audit Ltd
Chartered Accountants
East Tamaki, Auckland
19 May 2023

Supporting what we do

You can help Arts Access Aotearoa reduce barriers and increase access to the arts for everyone in New Zealand.

Make a donation

Help us ensure all people can participate in the arts either as creators or audience members. An easy and effective way to make a monthly donation and be kept up to date with events and activities throughout the year is to join Friends of Arts Access Aotearoa.

Arts Access Aotearoa is a registered charitable trust and donations of any size are gratefully received. You can claim a tax credit on donations of \$5 or more.

Sponsorship and corporate support

By sponsoring Arts Access Aotearoa, your business can be strategically aligned with a national arts charity that increases access to the arts for everyone in New Zealand.

Leave a gift in your will

Your bequest will help us build a more inclusive society to ensure that future generations will experience art and creativity, without barriers.

What your donation supports

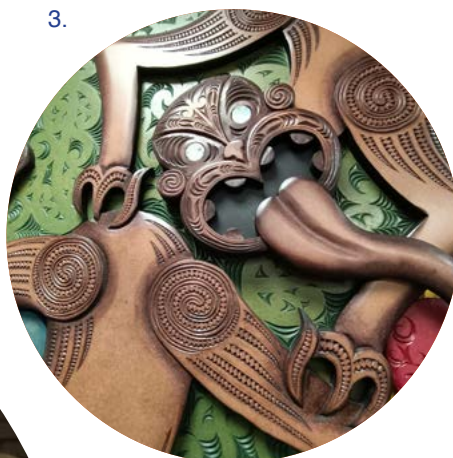
Arts Access Aotearoa provides advice, support and promotion across four key areas:

- [Deaf and disabled artists](#)
- [Creative spaces](#)
- [Arts For All Network](#)
- [Arts in Corrections facilities and Community Corrections.](#)

You can decide which areas your donation will be used for.

Thank you for your support.

If you would like more information about how you can support Arts Access Aotearoa, please contact Richard Benge, Executive Director (T: 04 802 4349 or 021 217 1002 E: richard.benge@artsaccess.org.nz).



1. Hugo, who attends Voice Arts' social drama classes, says they allow him to let loose and have a bit of fun [Watch the Artist Spotlight video](#)
2. A macrocarpa carving by men in Auckland Prison, to be installed in the fruit and vegetable garden surrounding its whakairo whare [Read the story](#)
3. An artwork (detail) by a prisoner on permanent display in the Department of Corrections' refurbished national office, Mayfair House, in Wellington
4. Milly Hampton and Stace Robertson, Arts Access Aotearoa, with actor Susan Williams, who performed *Illegally Blind* at Basement Theatre in Auckland, presented by Touch Compass

